

# DAIKEN

## DIGEST CATALOG

- DAIKEN's Product Lineup
- Product Introduction
- Introduction of Our Website
- Support Services for Design Offices
- Company Profile & Sales Area

Catalog CAD DATA Product Video

Global Website

Construction Hardware DAIKEN



<https://www.daiken.ne.jp/eng/index.html>



BUILD A WORLD BY  
BUILDERS  
HARDWARE



DIGEST  
CATALOG

Vol. **07**



建築金物総合メーカー



**DAIKEN**

SINCE 1924

# URBANIZATION TO THE REAL-COMFORT

DAIKEN's creative products for scenery supporting and the Real-Comfort Life of Town & people from personal to public space.

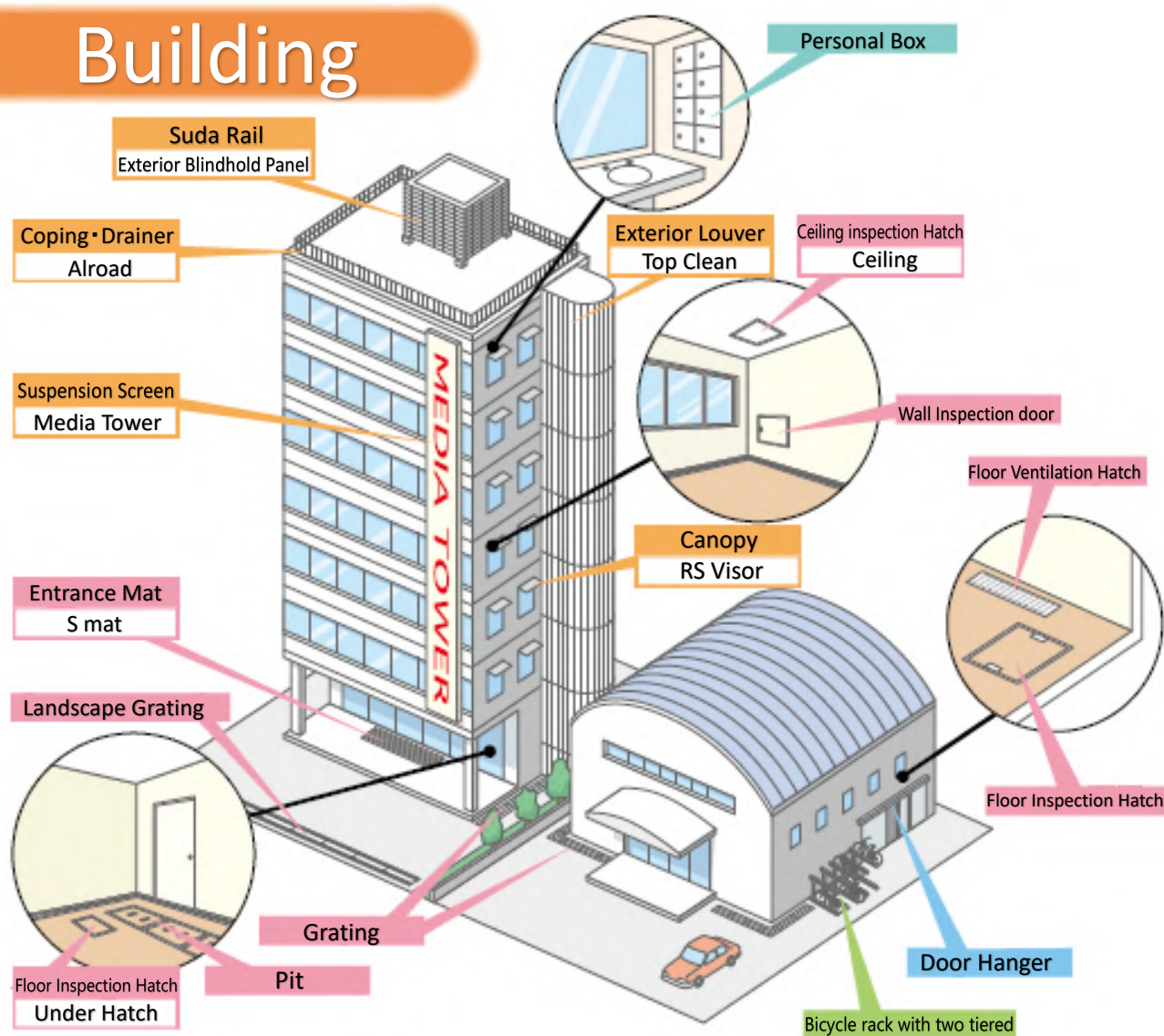
To maintain a comfortable daily life, We concern most latest technology and ingenuity to be always available.

We would say consideration for "Normal Life" we don't care supports real comfort.

In DAIKEN, based on the feedback from the site, doing the study・development for better products.

Please use products line-up of DAIKEN that realizes "Normal" in every scene.

## Building



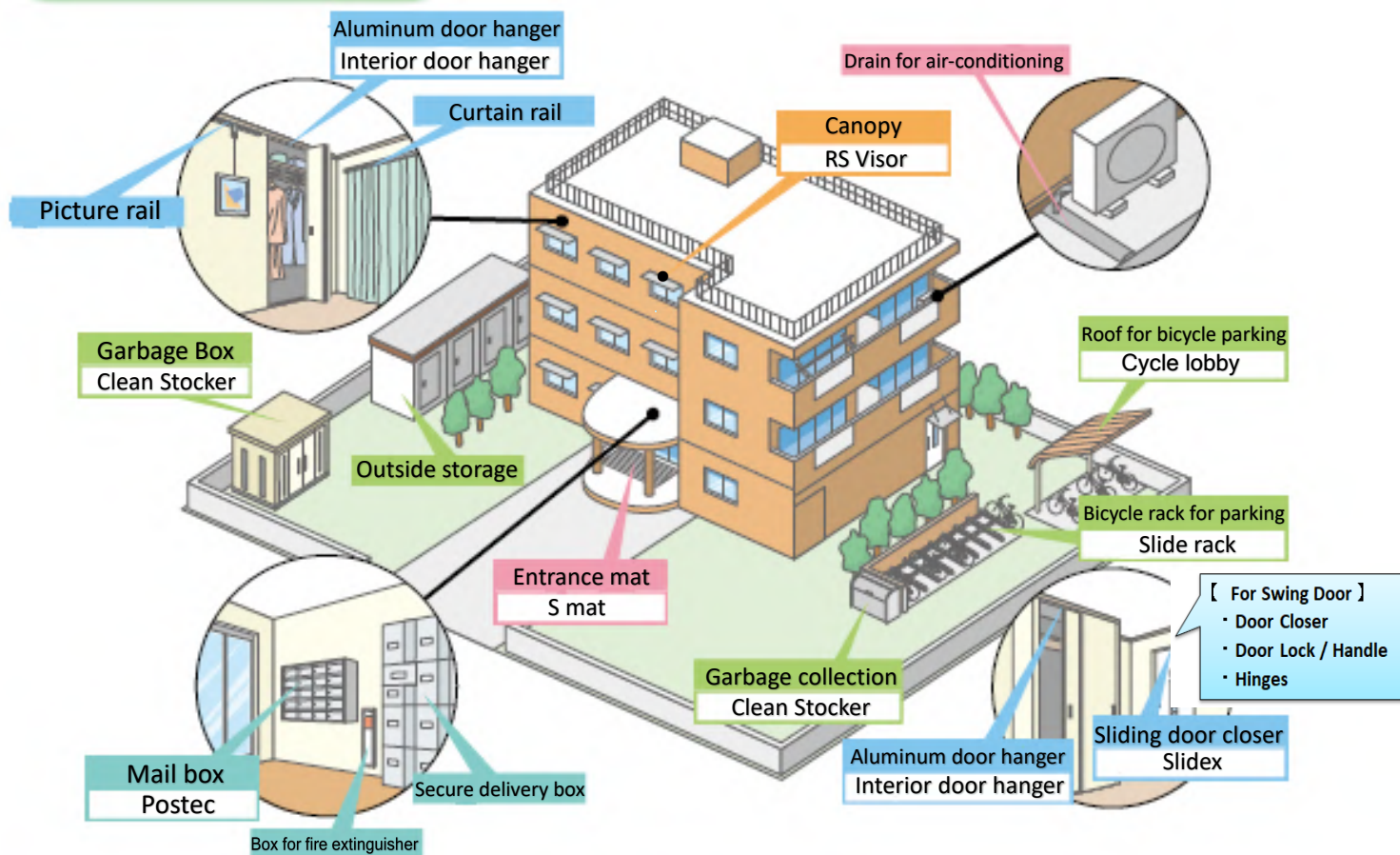
● Exterior Hardware (Building・Condominium )

● Interior Hardware (Building・Condominium ) ● Exterior for general housing (Detached House)

● Entrance/Facility Hardware (Building・Condominium) ● Hardware for Rail (Building・Condominium)

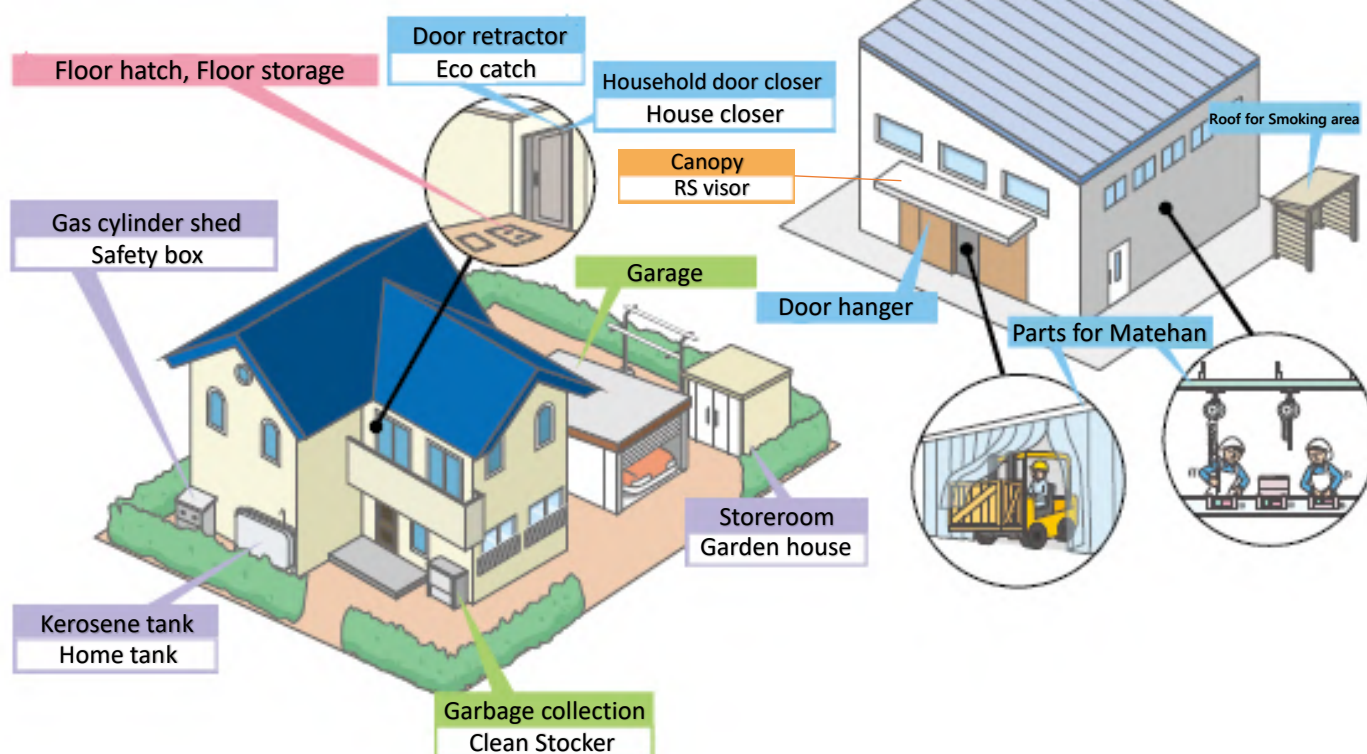


# Condominium



# Factory

## House



# PHOTO CONTENTS

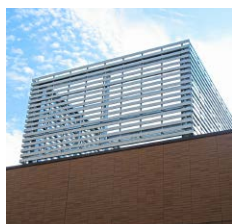
## Exterior (Decoration)



Canopy



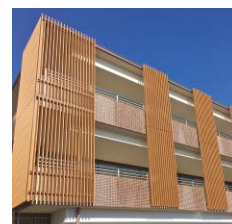
Small Canopy



Interlocking Louvers



Interlocking Louvers  
(Direct-Mount Type)



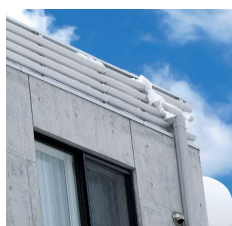
Bolt-Fastened Louvers



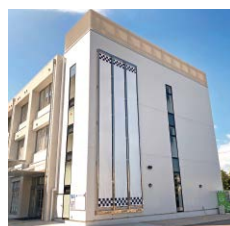
Coping



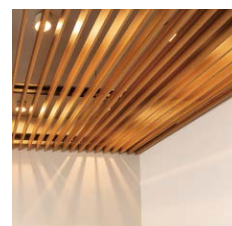
Drip Edge



Snow Guard /  
Snow Retention Device



Banner Hanging System



Ceiling Louvers



Ceiling Hatch



Wall Hatch



Home Floor Hatch



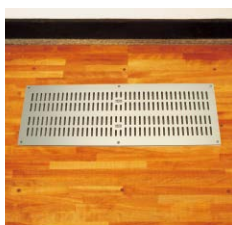
Floor Storage Hatch



Floor Hatch



Steel-Frame Floor Hatch



Floor Vent



HACCP-Certified Pit



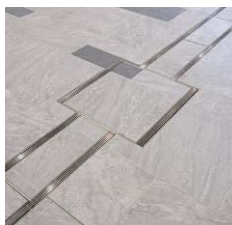
Drainage Unit



Grating



Resin Grating



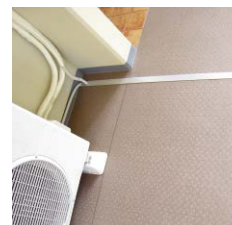
Decorative Grating



Pit Cover

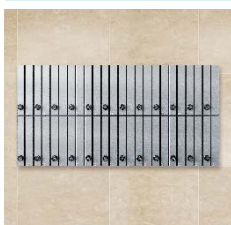


Stainless Steel  
Entrance Mat



Air Conditioner Drain  
Pipe

## Entrance



Mailbox Unit



Indoor Delivery Locker



Weather-Resistant  
Shared Delivery Locker



Weather-Resistant  
Private Parcel Box



Personal Locker

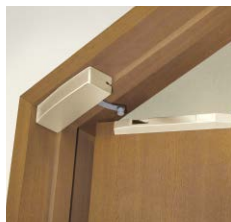


● For requests to receive product catalogs, please feel free to contact us. (Catalogs can also be viewed on our website. )

## Door Hardware – Rail



**Sliding Door Closer System**



**Door Retraction Device**



**Residential Door Closer System**



**Interior Sliding Door System**



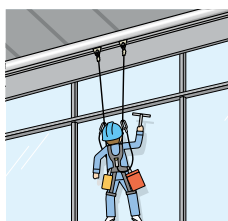
**Industrial Sliding Door System**



**Material Handling Parts**



**Transfer Rail**



**Maintenance Rail MRA**



**Maintenance Rail MRB**



**Picture Rail**

## Public Exterior



**Bike Parking Roof – Single Post Support**



**Bike Parking Roof – Center Post Support**



**Bike Parking Roof – Box Shape**



**Sunshade**



**Outdoor Smoking Area**



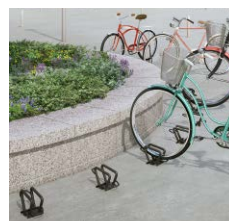
**Sliding Rack**



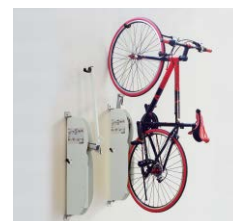
**Vertical Lift Rack  
Double-Deck Bike Rack**



**Bicycle Stand**



**Independent Bike Stand**



**Hanging Rack**



**Connected Storage Units**



**Double-Decker  
Storage Unit**



**Wood-Patterned  
Garbage Storage**



**Stainless Garbage Storage**



**Steel Garbage Storage**

## Home Exterior



**Garden Sheds**



**Compact Outdoor  
Storage Unit**



**Oil Storage Tank**



**Propane Gas  
Cylinder Storage Box**



**Secure Key/  
Storage Box**

## Other

# Recommended Items

## Bicycle Racks



Upper tier: VR-A5, Lower tier: SR-AFR (sold separately)

### Vertical Lift Rack VR-A5

Vertical bicycle rack with auto-return: the rack automatically rises after bike retrieval.

- Easy to raise and lower the rack, even for users with limited strength.
- The lower tier of the rack moves side to side. By installing a "Sliding Rack" (sold separately), more bicycles can be stored efficiently.

Rises Automatically !



Check out the features in the video!



## Sliding Rack



### SR-AFW

Designed with two rails for high stability on the installation surface and smooth rack movement.

Made of weather-resistant aluminum.

- Utilizes the front-to-back offset of the racks to reduce interference from handlebars and baskets.
- Can accommodate child-seat electric-assist bicycles and bicycles for young children.



### SR-AHW

Designed to take advantage of rack height differences, ideal for installation in limited spaces. Two aluminum rails provide high stability and smooth rack movement.

- Can accommodate child-seat electric-assist bicycles and bicycles for young children.

※Note: When storing electric-assist bicycles with child seats, please place them on the lower rack.

## Independent Bike Stand



### CS-M [BLACK]

A simple, freestanding cycle stand that matches various spaces.

- Can accommodate bicycles weighing up to 35 kg (when stored with the double stand engaged).



### CS-GF

A freestanding cycle stand designed specifically for wide-tire bikes. The stand is wider to accommodate extra-wide tires.

- Compatible with wide-tire bikes with tire widths of 10–12 cm, tire diameters of 20–26 inches, and weights up to 30 kg.

※Note: Tire diameter is based on the size notation for fat bike tires.

## Bike Parking Roof



### Solar-Powered Bicycle Lobby CY-PVH

An eco-friendly bicycle parking roof capable of solar power generation, making effective use of renewable energy. Featuring a double-sided solar design with integrated photovoltaic modules and roof structure.

- Due to power conversion efficiency, installation generally requires at least five spans (9 double-sided photovoltaic modules).



### Green Bicycle Parking Roof – Green Cycle Lobby

The roof of the bicycle parking is vegetated, contributing to the mitigation of the heat island effect. An eco-friendly bicycle parking area designed with environmental considerations.



## Garbage Collection Stocker – Clean Stocker



### Phosphated Pattern Finish CKS-RS2

Enlarged View of Pattern

Stainless Steel Body.  
Featuring a cool, dignified design with a phosphate-treated patterned sheet on the front panel.

- Lineup: four sizes  
(W1300/1650 × D750/900 mm).
- Equipped with rotary dampers that ensure quiet operation and long-lasting durability.



### Perforated Design CKP

Excellent ventilation, odor-resistant. High-security see-through design. Panels are aluminum-resin composite board.

- Easy to clean with a bottomless design.
- Features torque hinges that ensure safe and smooth door operation.
- A black finish that harmonizes with the building.



CKS-1006

CKR-1006-2

### CKS/CKR-2

A total of five sizes are available: one 600mm deep model in the stainless steel CKS series, and four 600mm deep models in the steel CKR-2 series.



### Gray Color Design CKR-G-2

Constructed from corrosion-resistant hot-dip galvanized steel with excellent durability. Featuring a chic gray finish that conveys a sense of luxury, this garbage collection unit is made of steel.

- Lineup: six sizes  
(W1300/1650/1950 × D750/900 mm).
- Features rotary dampers with excellent quietness and durability.



### Residential garbage collection CKH-B

Drip-Proof Clean Stocker, 400 mm deep and slim, perfect for short-term waste storage, outdoor use, or delivery box purposes.

- Lineup: two sizes (W1000/ 1300mm).
- Made of steel, available in White and Dark Gray.

#### Installed Examples

Multiple units allow for easy waste separation!



## Delivery Box

### Water-Resistant, Shared Use (For Residential Complexes)



### Mechanical Push-Button Lock Type TBX-F

6 body and door color combinations.  
Features an adjustable push-button lock for communal use of the delivery box.

- 5 unit types. Flexible combinations. Recommended: 40% of households.
- Drip-proof design: standard protection against rainfall of 120mm/h.
- Maximum package size per box type: L – 150, N/S – 100, SSN/SS – 80.

※Note: Image features optional baseboard.

### Exclusive Use – For Detached Houses



### Smart Delivery Box KBX-31LG

Smartphone app allows door unlocking and viewing of usage history.  
Dustproof and waterproof, suitable for outdoor installation.

- Battery-powered  
– approx. 1 year runtime using dedicated rechargeable battery.
- Maximum package dimensions: W350 × D440 × H580mm.

# Recommended Items

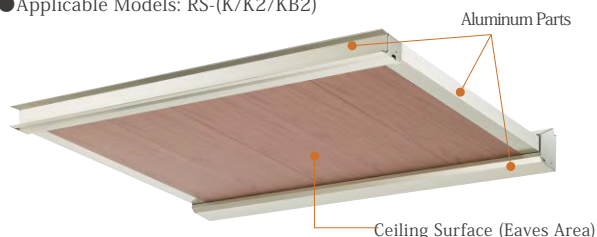
## RS VISOR Aluminum Canopy Series

### WL Type: Wood-Grain Sheet Wrapped Ceiling

Wood-grain color, suitable for commercial and residential use.

Sheet-wrapped, highly weather-resistant.

●Applicable Models: RS-(K/K2/KB2)



※Note: Aluminum parts are finished in stainless color (composite coating). Silver, Black, and painted finishes are not supported.

※Note: WL-type wood-grain sheet wrapping is available for the ceiling (under eaves) only.

### Wide lineup for various sites.

- Sophisticated design that blends seamlessly with buildings.
- Shading and thermal insulation for energy-efficient cooling.



RS-K Model with WL Wood-Grain Ceiling Finish

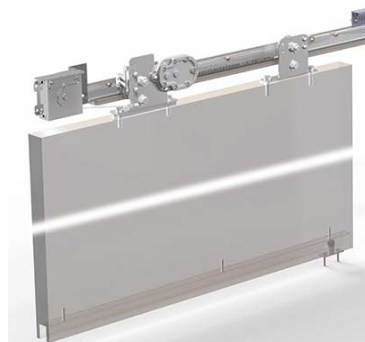


RS-K2 + LED Spotlight Type

## Sliding Door Closer Device

### SLIDEX [For Outdoor Use] HCH-S

Steel Door Sliding Closer for Exterior Entrances  
(Horizontal Rail / Self-Closing Type)



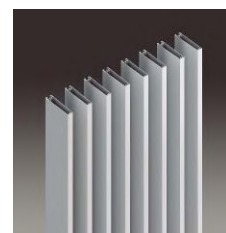
- Door closing with a "spring-driven mechanism" that allows easy speed adjustment.
- High-performance horizontal rail type with hydraulic control.
- Certified by the Japan Public Building Association, ensuring reliability and safety.

## Bolt-Fastened Louver

### Top Clean [Louver Type] SLK-2513

A new design added to the classic, high-strength bolt-fixed exterior louvers.

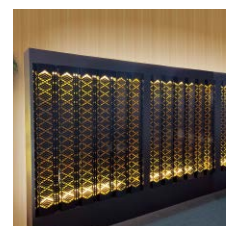
- Can be installed vertically or horizontally.
- Designed for excellent wind pressure resistance and durability.



### Top Clean [Perforated Corrugated Panel] SLP-(W/J)250

Japanese Patterns Added to Decorative Steel Perforated Panels

- 14 variations of Japanese pattern perforations.
- Highly durable, corrosion-resistant hot-dip galvanized steel.



## Access Hatch Series

### Fire-Resistant, Airtight Ceiling Inspection Hatch CFP For High Ceilings CQT3

Fire-Resistant & Airtight  
(45/60 min Fire-Resistant Construction)



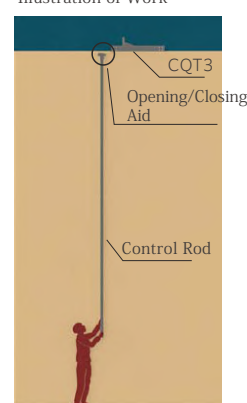
- Fire-resistant fittings with included fireproof covering improve fire resistance. 60-minute fire-rated specification with inner frame board-supporting angle for improved fire resistance.
  - Airtight material contributes to better energy efficiency and soundproofing, corresponding to JIS A 4706 A-4 rating.
- ※We also manufacture airtight and insulated types for the 45-minute fire-resistant specification.  
Please feel free to contact us for more information.
- Standard ceiling runners of 30×40 mm (or larger) can be used.

Simplifies ceiling inspections at height.  
Outer frame design prevents inner frame uplift.



- Equipped with a safety spring as standard to prevent the inner frame from falling.
- Allows control of the inner frame's opening angle.
- Easy operation with a simple push of the lock button.

Illustration of Work





# PICK UP >> Introduction of the Hanger Rail Series

We offer a wide lineup in the Hanger Rail Series, from door hanger components capable of suspending large and heavy doors in factories to parts for holding jigs and safety harnesses.

## Door Hanger for Entrance Doors

A lineup of Steel Door Hangers for indoor and semi-outdoor applications, and Stainless Steel Door Hangers for outdoor use. Components are selectable according to door weight, supporting doors from 70 kg to 1,500 kg.



Check the installation method in the video!



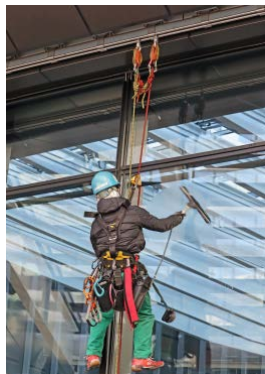
For factory and warehouse doors

## Maintenance Rail MRA

A safety harness suspension system designed to prevent fall accidents during special high-place operations.

- Ideal for special high-place work without scaffolding.
- Made of durable stainless steel.

Check out the features in the video!

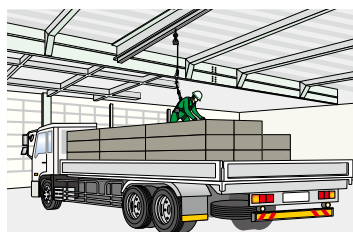


## Maintenance Rail MRB

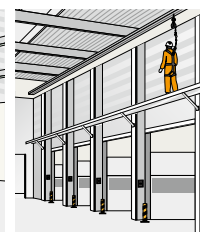
For safety measures during truck loading/unloading operations and work on building catwalks.

- By attaching a lifeline to the trolley, horizontal movement is possible while ensuring fall protection.

Check out the features in the video!



For truck cargo handling



For work on catwalks

## Material Handling Components – Electric Motor Driven

Enables automatic transport of products and materials, contributing to improved work efficiency.

Check out the features in the video!



For Flat Rail FT200-AT

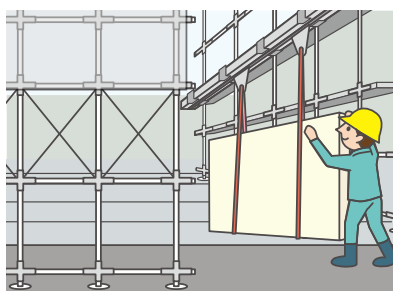


For Piping Rail MTC-AT

## Transport System for Temporary Scaffolding – Hansaw Rail

Helps streamline material handling at construction sites!

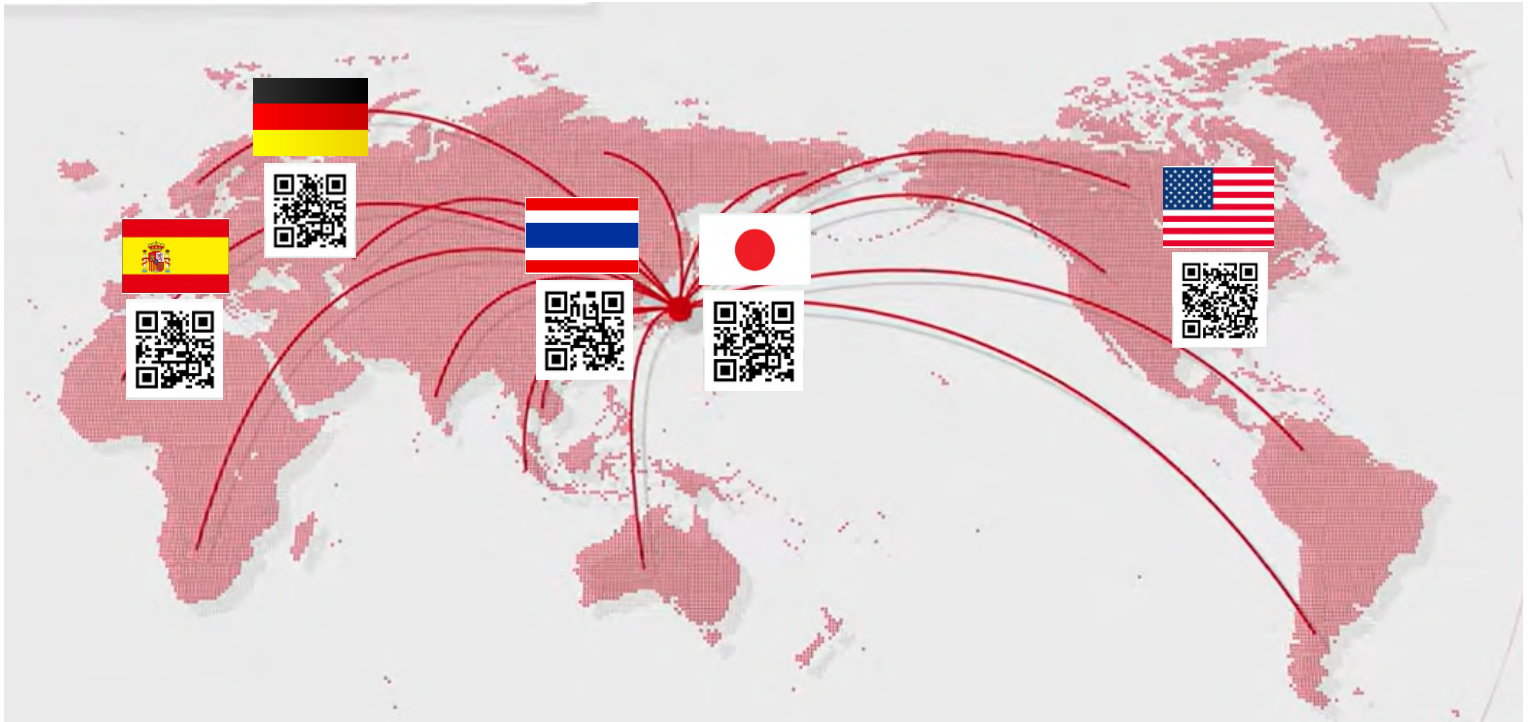
- Enables easy transport from delivery to hoisting of exterior panels and long items such as downpipes.



Check the video for usage examples.



Visit our global website!

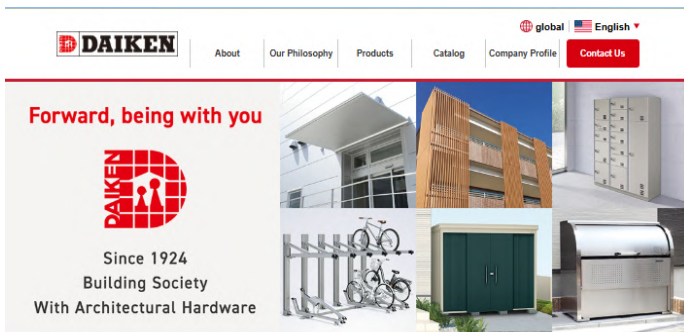


## Explore Daiken Online!

Our official website offers multilingual content like Product Information and Company Profile, plus a digital catalog you can view on your computer.

You'll also find helpful resources such as Video Gallery, FAQ, 2D CAD data, and user manuals (PDF).

Please feel free to contact us anytime for more details.



### About

DAIKEN is an all-around metal manufacturer, supplying a wide range of products such as building materials for external trim, hardware, metal fittings, and exterior metal products, aiming at "creation of comfortable space & peaceful environment for people". DAIKEN also exports lots of products related to houses and buildings.

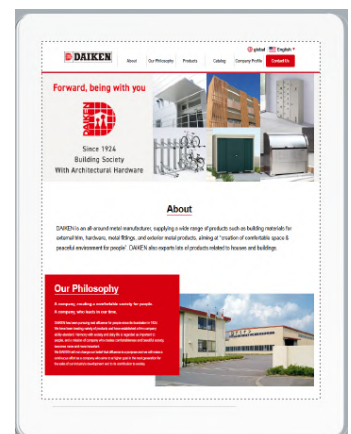
### Our Philosophy

A company, creating a comfortable society for people.  
A company, who leads in our time.

DAIKEN has been pursuing real affluence for people since its foundation in 1924. We have been treating variety of products and have established a firm company ability standard. Harmony with society and daily life is regarded as important to people, and a mission of company who creates comfortable and beautiful society, becomes more and more important. We DAIKEN will not change our belief that affluence is a purpose and we will make a continuous effort as a company who aims to a higher goal in the next generation for the sake of the industry's development and to its contribution to society.



## Available on smartphones and tablets!



### Access

[View on Google Maps](#)



## Company Profile

<b>Name</b>	DAIKEN CO.,LTD
<b>Representative</b>	Yoichi Fujioka
<b>Head office</b>	Address: 2-7-13, Niitaka, Yodogawa-ku, Osaka, 532-0033 Japan
<b>Listed market</b>	Standard Market Security Code: 5900
<b>Founded</b>	March 1948
<b>Capital</b>	481,524,000 yen
<b>Number of employees</b>	326
<b>Site Area</b>	111,299m <sup>2</sup>
<b>Building Area</b>	52,060m <sup>2</sup>
<b>Bank</b>	Resona Bank, Limited. Sumitomo Mitsui Banking Corporation. Mizuho Bank, Ltd. MUFG Bank, Ltd.
<b>Contact by fax</b>	+81-6-6150-4777

## Connect with DAIKEN



Instagram



facebook



YouTube



Instagram: [https://www.instagram.com/daiken\\_global/](https://www.instagram.com/daiken_global/)

facebook: <https://www.facebook.com/daiken.global/>

YOUTUBE: <https://www.youtube.com/@daikenco.ltdofficial869/videos>

### Domestic Sales Areas

