

Industrial Sliding Door System #5 · #6

Loading Weight
(Per two 4-wheel hangings)*1

500kg ▶ #5

700kg ▶ #6

*1 Loading weight per one door with two 4-wheel hangings

inch screw

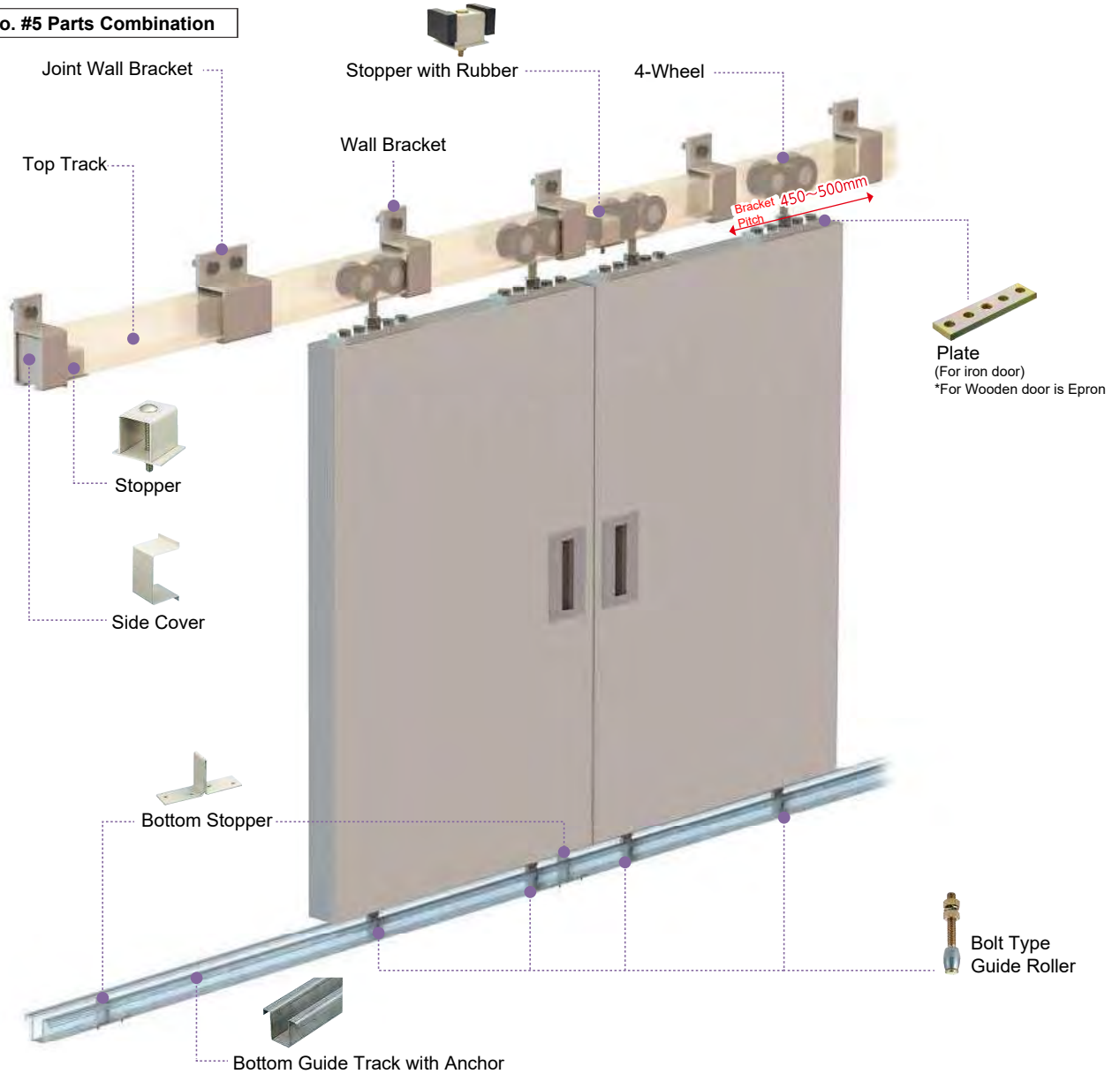
Painting Color
Munsell
No. 5Y7/1
(Beige)
*Applicable: #5

*No paint for #6

Melting Spot



Ex. No. #5 Parts Combination



Wheel Type



4-Wheel(4WH)

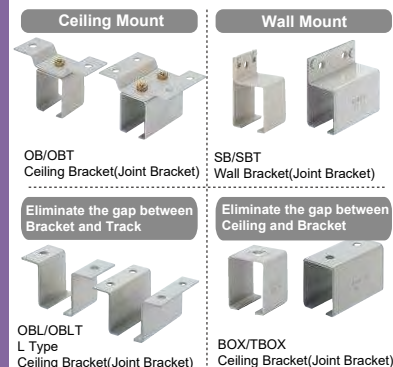
Mainly for
Straight Track



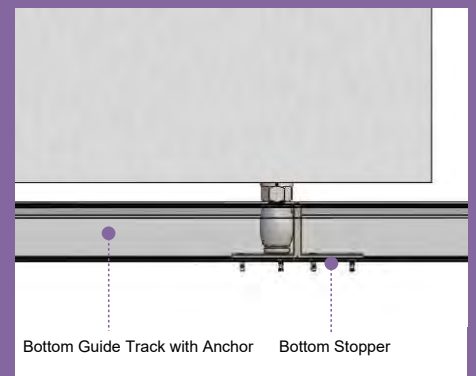
2-Wheel(2WH)

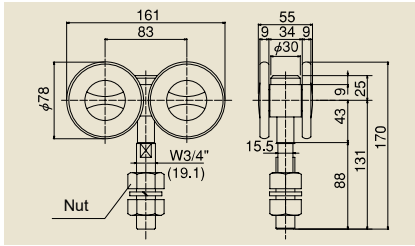
Mainly for
Curve Track

Bracket Type



Bottom Door Part



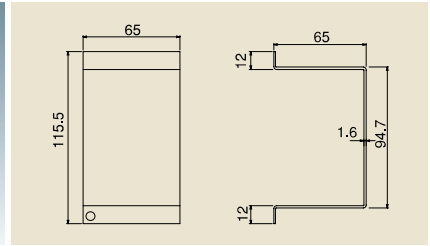


4-Wheel

•Adapt in-house manufactured bearings.

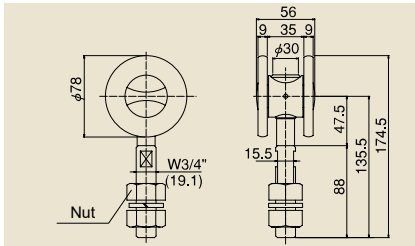
4WH

Door Weight:
Up to 500kg/per 2 hangings



Side Cover
#5 STP

•Track Edge Cover for preventing a gap.
•It's not for stopping the Wheel. In case of stopping the Wheel, please use the Stopper.
•Not applicable for Ceiling and Wall Track bracket.
•Can't use with Door Stopper.



2-Wheel

•Bolt with retaining processing.
•Adapt in-house bearing.
•Applicable for Curve Track. Please use 4-wheel in case of using for straight movement of the door.

#5 2WH

Door Weight:
Up to 250kg/per 2 hangings

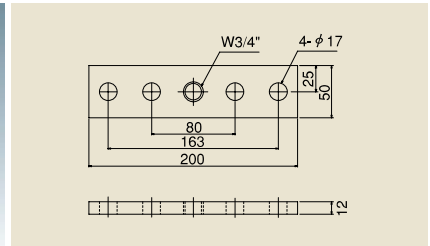
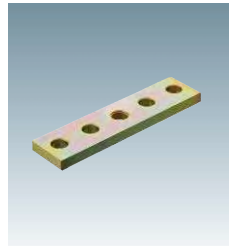
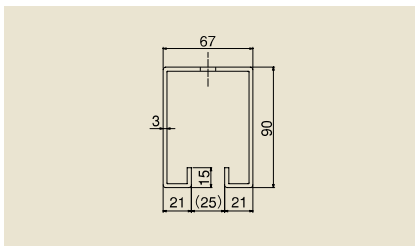


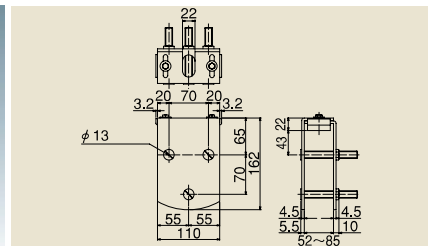
Plate
#5 PL

•Parts for connecting the bolt of 2 or 4-Wheel with the steel door.



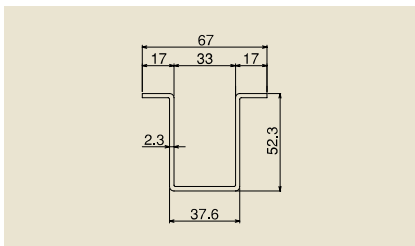
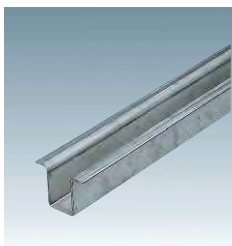
Top Track
#5 HR

•Track Length: 1820, 2730, 3640, 4550mm
•Painting Color is Munsell No. 5Y7/1
•Powder coating finish for 1820, 2730, 3640mm
Urethane coating finish for 4550mm
•Curve Track differs in the section shape.



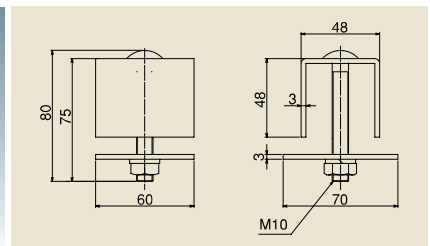
Apron
#5 HR

•With W3/8" x 100 Countersunk Bolt & Nut.
•Parts for connecting the bolt of 2 or 4-Wheel with wooden door.



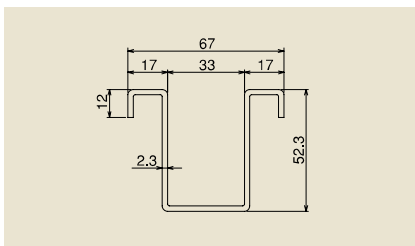
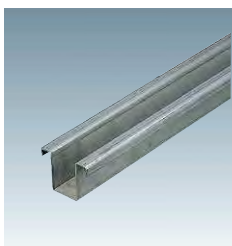
Bottom Guide Track
#5 HR

•Track Length: 1820, 2730, 3640mm
•Painting Color is Munsell No. 5Y7/1
•Curve Track differs in the section shape.
(Same shape with No. 5(#5) Bottom Guide Track with Anchor)



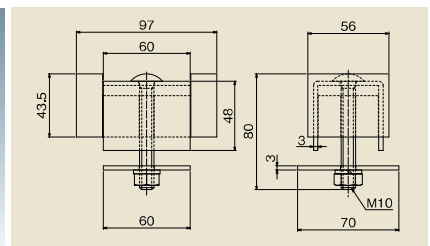
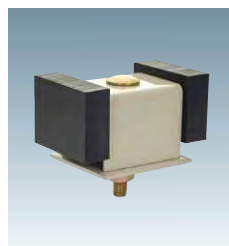
Stopper
#5 AP

•In case the large impact force is expected, please use the bottom stopper with this stopper together and hit the door on the vertical frame.
•Can't use with Side Cover.



Bottom Guide Track with Anchor
#5 NGR

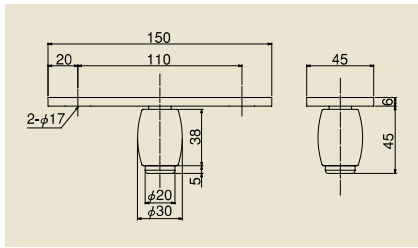
•Track Length: 1820, 2730mm
•Downward Lips on both side end can be used as Anchor.
•Curb Track differs in the section shape.



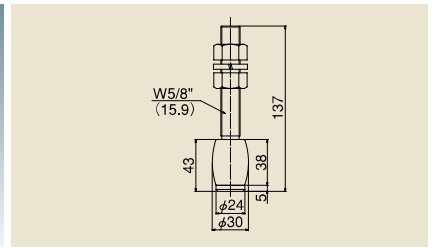
Stopper with Rubber
#5 CSQ

•In case the large impact force is expected, please use the bottom stopper with this stopper together and hit the door on the vertical frame.
•Can't use with Side Cover.

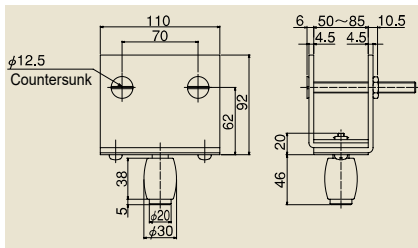
Industrial Sliding Door System #5



Guide Roller
#5 GRO

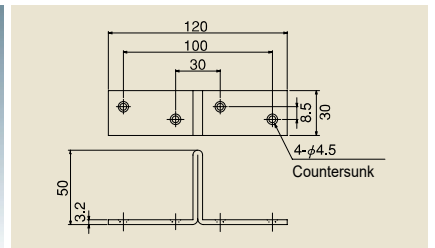


Bolt Type Guide Roller
#5 GRB



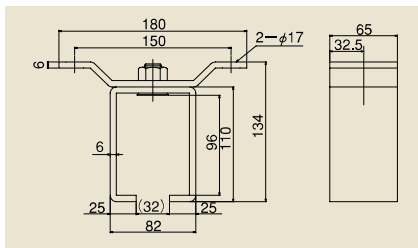
Retrofit Guide Roller
#5 GRAP

•With W3/8" x 100 Countersunk Bolt & Nut.



Bottom Stopper
#5 GRS

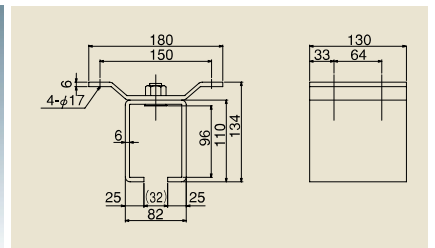
•Common with #3
•Mount the stopper in the internal groove on the Bottom Guide Track so that it works as the stopper for Guide Roller and it's used for door positioning.
•In case of the large impact force is expected, please use the stopper or stopper with rubber together and hit the door on the vertical frame.



Ceiling Bracket
(Single Track)

#5 OB

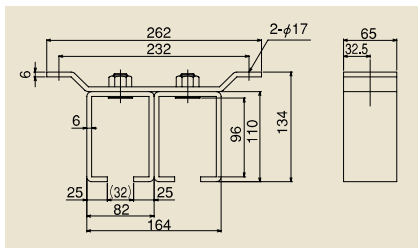
•Assembly bolt of box and Wing are all M16 countersunk bolt.
•Recommended mounting Screw: M16



Ceiling Bracket
(Single Track)

#5 OBT

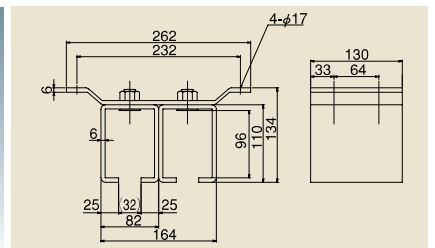
•Assembly bolt of box and Wing are all M16 countersunk bolt.
•Recommended mounting Screw: M16



Ceiling Bracket
(Double Track)

#5 OB2

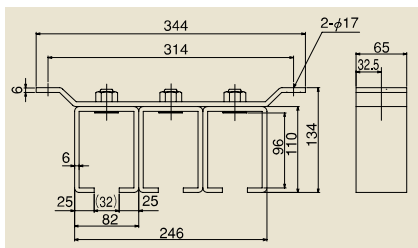
•Assembly bolt of box and Wing are all M16 countersunk bolt.
•Recommended mounting Screw: M16



Joint Ceiling Bracket
(Double Track)

#5 OBT2

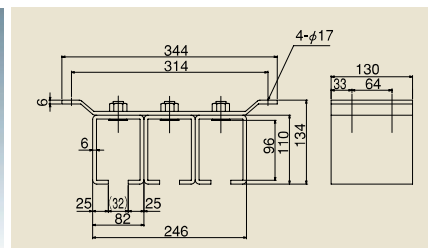
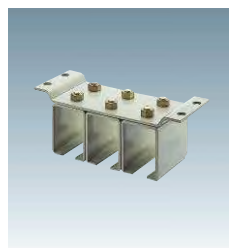
•Assembly bolt of box and Wing are all M16 countersunk bolt.
•Recommended mounting Screw: M16



Ceiling Bracket
(Triple Track)

#5 OB3

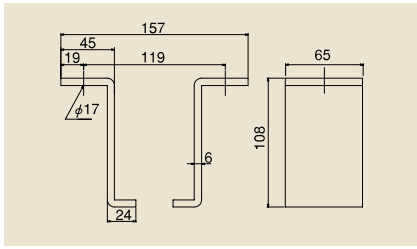
•Assembly bolt of box and Wing are all M16 countersunk bolt.
•Recommended mounting Screw: M16



Joint Ceiling Bracket
(Triple Track)

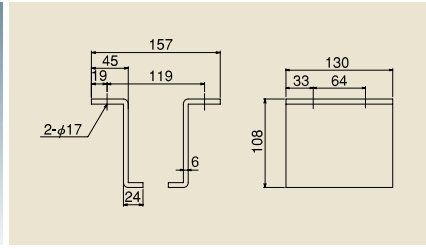
#5 OBT3

•Assembly bolt of box and Wing are all M16 countersunk bolt.
•Recommended mounting Screw: M16



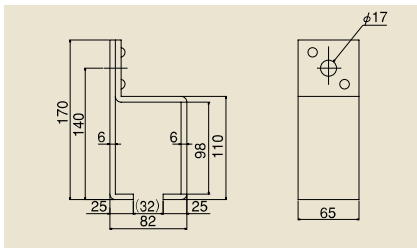
L-Shaped Ceiling Bracket
#5 OBL

•Used for preventing the gap between Track and Ceiling Bracket.
•Recommended mounting Screw: M16



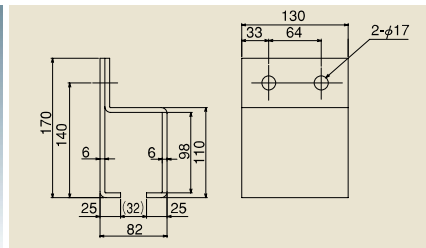
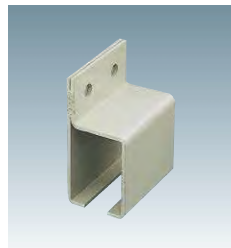
L-Shaped Joint Ceiling Bracket
#5 OBLT

•Used for preventing the gap between Track and Ceiling Bracket.
•Recommended mounting Screw: M16



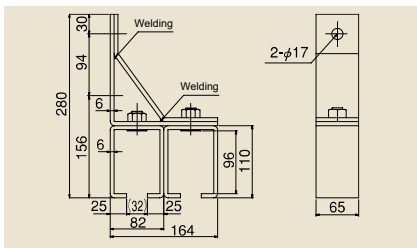
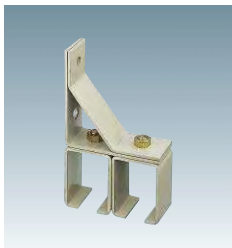
Wall Bracket (Single Track)
#5 SB

•Recommended mounting Screw: M16



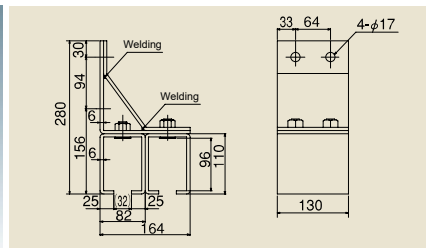
Joint Wall Bracket (Single Track)
#5 SBT

•Recommended mounting Screw: M16



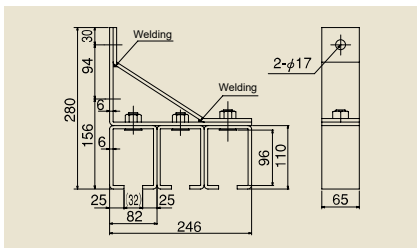
Wall Bracket (Double Track)
#5 SB2

•Assembly bolt of box and Stay are all M16 countersunk bolt.
•Stay is melted.
•Recommended mounting Screw: M16



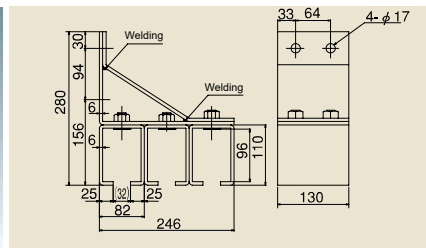
Joint Wall Bracket (Double Track)
#5 SBT2

•Assembly bolt of box and Stay are all M16 countersunk bolt.
•Stay is melted.
•Recommended mounting Screw: M16



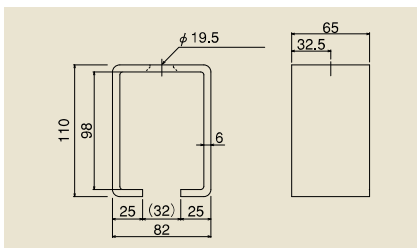
Wall Bracket (Triple Track)
#5 SB3

•Assembly bolt of box and Stay are all M16 countersunk bolt.
•Stay is melted.
•Recommended mounting Screw: M16



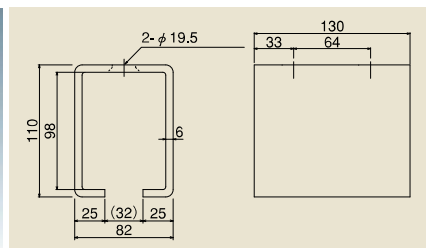
Joint Wall Bracket (Triple Track)
#5 SBT3

•Assembly bolt of box and Stay are all M16 countersunk bolt.
•Stay is melted.
•Recommended mounting Screw: M16



Ceiling Bracket (Single Track)
#5 BOX

•Use the W1/2" or M12 countersunk bolt for installation.



Joint Ceiling Bracket (Single Track)
#5 TBOX

•Use the W1/2" or M12 countersunk bolt for installation.