

# Industrial Sliding Door System



**A Stopper**



**Stopper**



**Rubber Stopper**

Fix Stopper by screw into the inner groove of Top Track.  
Rubber Stopper is absorbing the wheel collision sound.



**Suspension Wheel**

Select Wheel type of two types according to purpose and suspension load.  
Please use 4-Wheel in case of straight track.



**4-Wheel**



**2-Wheel**

**Top Track Holder**

Parts for connection Tracks.  
\*Available in #2-#4 Type

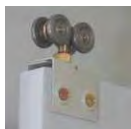
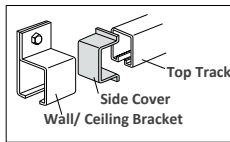


\*Fix screw from inside track



**Side Cover**

Insert slide cover into the edge of track.  
Rolls as an edge blind fold.



**Plate/Apron**

Parts for connecting the wheel and door body.  
Plate is used for steel door.  
Apron is used for wooden door.



**Plate(For Steel Door)**



**Apron(For Wooden Door)**



**Bottom Stopper**

Screw the stopper in groove of bottom Guide track. It works as a stopper of Guide Roller and is used for Door positioning.



**Joint Wall Bracket**



**Joint Ceiling Bracket**



**Wall Bracket**



**Ceiling Bracket**

**Track Joint Bracket**

Used for jointing top tracks.  
Two types for Wall and Ceiling.

\*Fix joint and track by spot welding.  
Fix by Connection Plate and Joint Clamp also available for #2-#4.

**Bracket**

Used for mounting tracks on building materials.  
Two type for Wall and Ceiling.  
Single-Four Tracks are available.

\*Mounting pitch from 450-500mm.  
\*Please spot welding to fix track and Bracket.



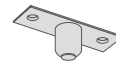
**Top Track**

Orbit for suspension wheel.  
Curve track is also available.



**Bottom Guide Track**

Orbit for Guide Roller



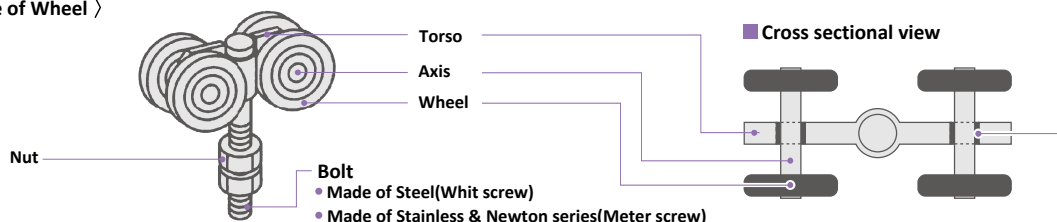
**Guide Roller(For Iron Door)**



**B Bottom Guide Roller**

Used at the bottom of suspended door to stop the door shaking and swinging by the wind.

## < Parts name of Wheel >



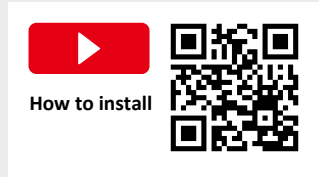
**Bolt**  
 • Made of Steel(Whit screw)  
 • Made of Stainless & Newton series(Meter screw)

# How to select Daiken Industrial Sliding Door System

1

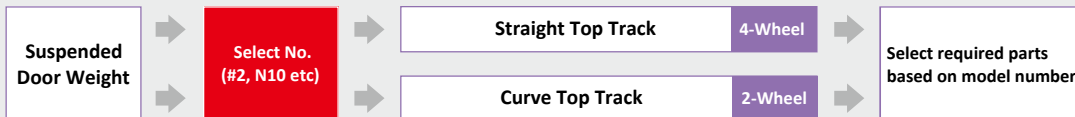
Select **Material** according to purpose of use place

Indoor use	Steel Sliding Door Track
Outdoor use where rust may occur	Stainless Steel Door Track



2

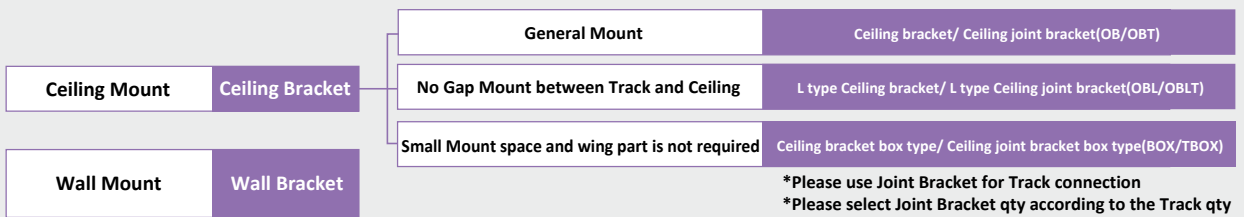
Select **Product No.(#)** according to Door Weight



\*1 Conversion per 2 of suspension wheels for one door  
 \*Some 4-Wheel of Steel door hanger & Newton series are applicable for Curve Top Track.

3

Select **Brackets** according to installation place



4

Select **Connecting Parts** between door and wheel

Steel Door	Plate
Wooden Door	Apron

5

Select **Bottom Guide** to prevent door shacking

