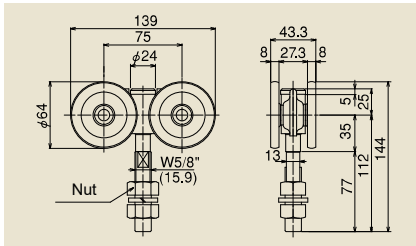


# Steel Sliding Door Hanger No.4 (#4)

150kg by 2-Wheel / 300kg by 4-Wheel

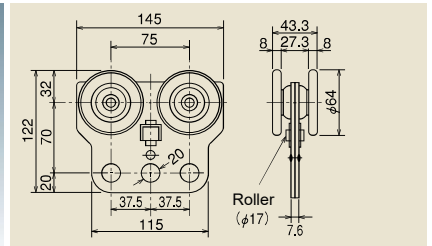


2-Wheel

## #4 4WH

Door Weight: Up to 300kg/2 pcs

- Adapt Oil less bearing.
- In case of used frequently, please use 4-Wheel with bearing.

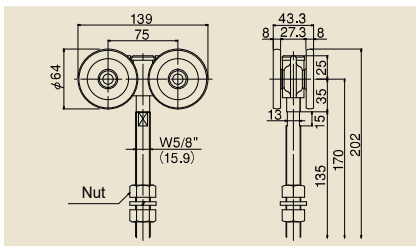


Tool D 4-Wheel

## HD-42

Door Weight: Up to 150kg/1 pc

- Optimum for hanging Air-tool and Electronic-tool by the hole of balancer.
- Adapt Oil less bearing.
- Not applicable for Curb Rail.

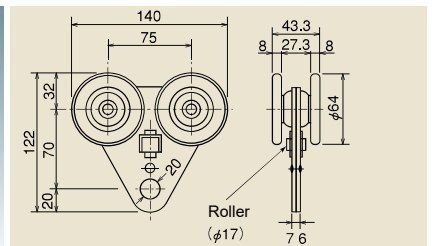


Wheel With Long Bolt

## #4 4WH-1LB

Door Weight: Up to 300kg/2 pcs

- Parts that is used by sandwiching a squared timber with nut.
- Adapt Oil less bearing.

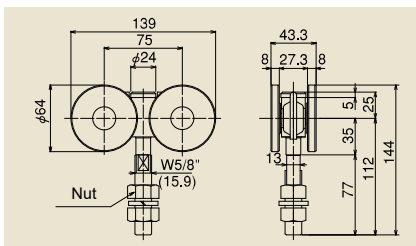


Tool C 4-Wheel

## HC-42

Door Weight: Up to 150kg/1 pc

- Optimum for hanging Air-tool and Electronic-tool by the hole of balancer.
- Adapt Oil less bearing.
- Not applicable for Curb Rail.
- Not applicable for Rail Holder.

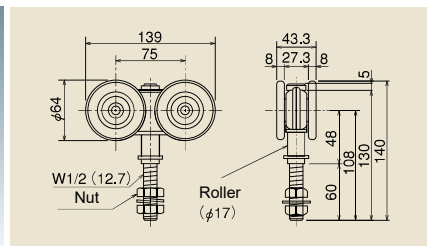


4-Wheel with Bearing

## #4 4WH-B

Door Weight: Up to 300kg/2 pcs

- Adapt High performance bearing(#608ZZ)

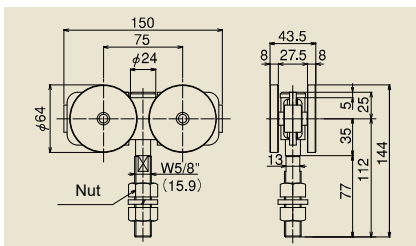


Trolley 4-Wheel

## HC-43

Door Weight: Up to 150kg/1 pc

- By the bolt rolling freely, it can change the direction of hanging object freely.
- Adapt Oil less bearing.
- Not applicable for Curb Rail.
- Not applicable for Rail holder, Apron and Plate.

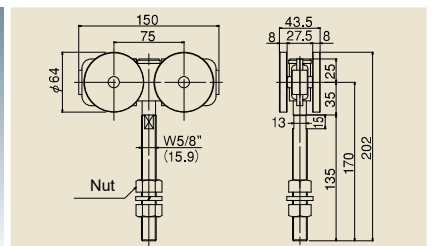


Wheel with Bearing  
[Flexible Type]

## #4 4WH-BN

Door Weight: Up to 300kg/2 pcs

- Wheel Axis moves flexibility and 4-wheel always gets a load equally even if the hanging bolt is learning.
- Adapt High performance bearing.



4-Wheel with Bearing  
[Flexible Type]

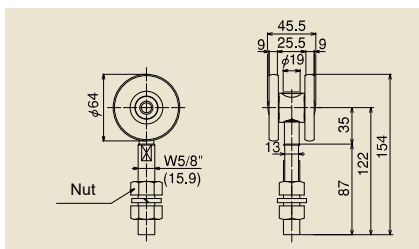
## #4 4WH-BN-1LB

Door Weight: Up to 300kg/2 pcs

- Parts that is used by sandwiching a squared timber with nut.
- Adapt High performance bearing.

# Steel Sliding Door Hanger No.4 (#4)

150kg by 2-wheel / 300kg by 4-wheel

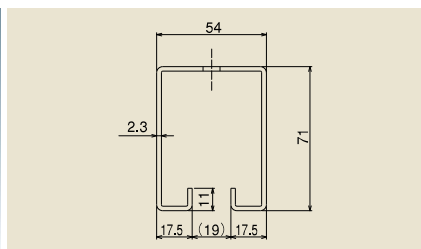


Wheel with Bearing

## #4 2WH

Door Weight: Up to 150kg/2 pcs

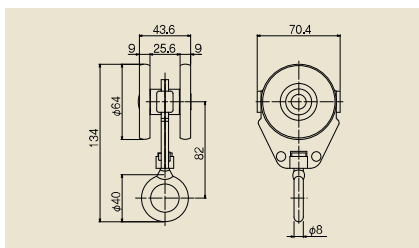
- Bolt with retaining processing.
- Adapt a house bearing.
- Applicable for Curb Rail. Please use 4-wheel in case of using for straight movement of the door.



Hanger Rail

## #4 HR

- Rail Length: 1820, 2730, 3640, 4550mm
- Painting Color is Munsell No. 5Y7/1
- Powder coating finish for 1820, 2730, 3640mm Urethane coating finish for 4550mm

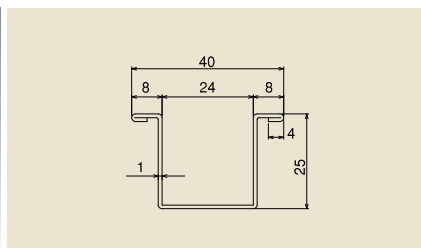
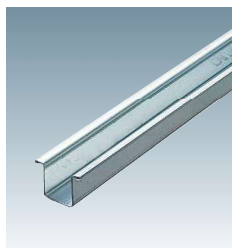


2-Wheel with #4 Ring Type2

## #4 2WHL2

Door Weight: Up to 75kg/1 pc

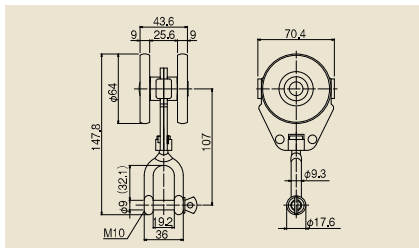
- As the Spec for wheels not hitting each other, the surface of wheel is not scratched.
- Adapt in house bearing.
- Not applicable for Rail holder.



Guide Rail

## #3 GR

- Common with #3
- Rail Length: 1820, 2730, 3640mm
- Curb Rail differs in the section shape.

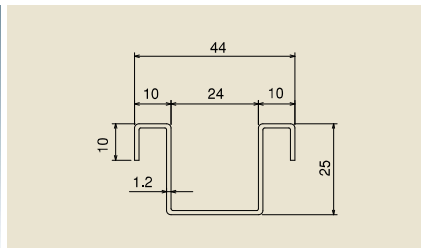


2-Wheel with #4 Shackle Type2

## #4 2WHSY2

Door Weight: Up to 75kg/1 pc

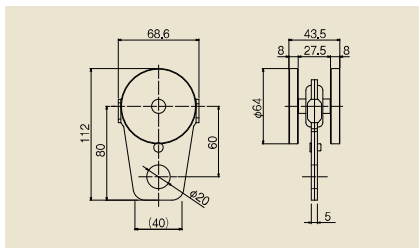
- As the Spec for wheels not hitting each other, the surface of wheel is not scratched.
- Adapt in house bearing.
- Not applicable for Rail holder.



Rip Guide Rail

## #3 NGR

- Common with #3
- Rail Length: 1820, 2730, 3640mm
- Downward Lips on both side end can be used as Anchor.
- Curb Rail differs in the section shape.

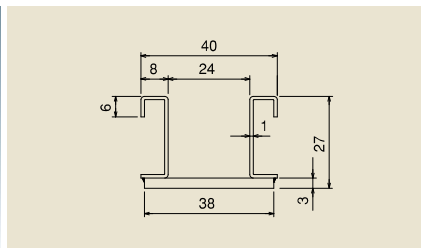


#4 Tool 2-Wheel Type2

## #4 2WHTU2

Door Weight: Up to 75kg/1 pc

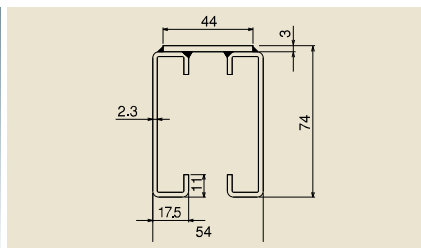
- Can be used for #4 Hanger rail and Curb rail.
- Adapt High performance bearing.
- As Wheel Axis moves flexibly, the running is smooth.
- Not applicable for Rail holder.



Curb Guide Rail

## #3 GR920R

- Common with #3
- Material: SPHC (Lacquer-finish, Munsell No. 5Y7/1)
- Standard R: R920 (1/4 Circle)
- Made to order except item of standard stock.



Curb Rail

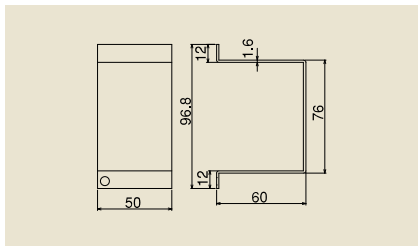
## #4 HR920R

- Material: SGHC (Baking finish, Munsell No. 5Y7/1)
- Standard R: R920 (1/4 Circle)
- Made to order except item of standard stock.

# Steel Sliding Door Hanger No.4 (#4)



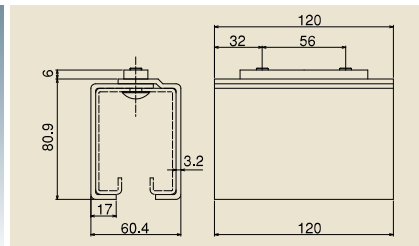
Side Cover  
**#4 STP**



- Rail Edge Cover for preventing the Rail gap.
- It's not for stopping the Wheel. In case of stopping the Wheel, please use the Stopper.
- Not applicable for Ceiling and Wall Rail bracket.
- Can't use with Door Stopper.



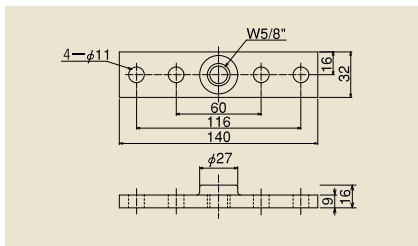
Rail Holder  
**#4 RH**



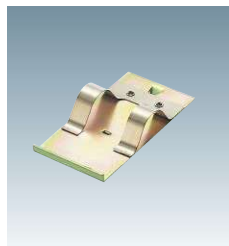
- Connection parts of rails between brackets.
- Short length rails can be connected in advance and installed as long length Rail.
- Unapplicable for Curb Rail and Ceiling Bracket.
- Assembly bolt: M8 x 16 Truss Screw.



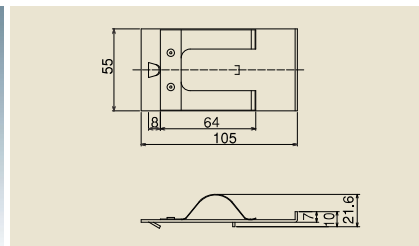
Plate  
**#4 PL**



- Parts for connecting the bolt of 2 or 4-Wheel with the steel door.



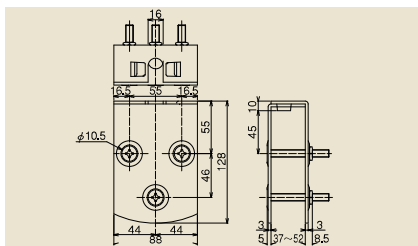
Joint Clamp  
For Joint Bracket for Ceiling or Rail Joint Bracket for Wall (Double Track)  
**#4 ORJ**



- Parts that can prevent for the gap of Hanger rail.
- Unavailable for Curb Rail and Ceiling Bracket.



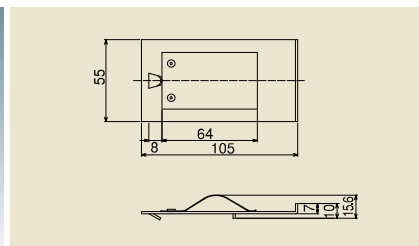
Apron  
**#4 AP**



- With M8 x 65 Countersunk Bolt & Nut.
- Parts for connecting the bolt of 2 or 4-Wheel to wooden door.



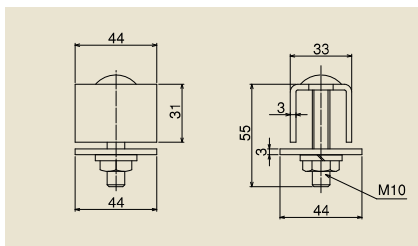
Joint Clamp  
Rail Joint Bracket for Wall (Single Track)  
**#4 SRJ**



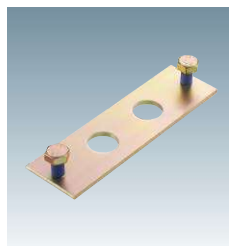
- Used for Rail Joint Bracket
- Unavailable for Curb Rail and Ceiling Bracket.



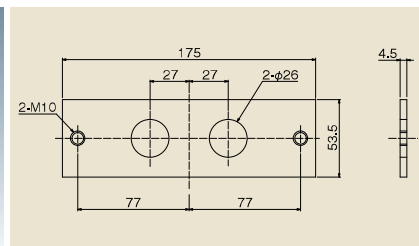
Stopper  
**#3 CS**



- Common with #3
- In case the large impact force is expected, please use the bottom stopper with this stopper together and hit the door on the vertical frame.
- Can't use with Side Cover.



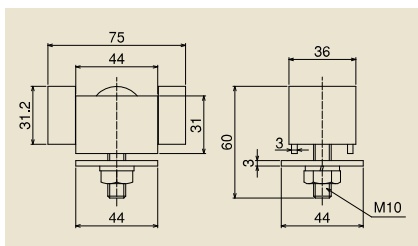
Rail Connection Plate  
**#4 RP**



- With 2 pcs of M10 bolt
- Can connect the rails without welding and prevent for backlash of rails.
- Not applicable for Curb Rail, Wall and Ceiling Brackets.



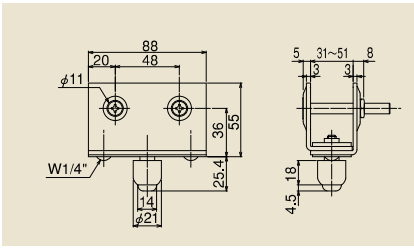
Stopper with Rubber  
**#3 CSQ**



- Common with #3
- Used for preventing the Wheel dropout and Door positioning.
- In case the large impact force is expected, please use the bottom stopper with this stopper together and hit the door on the vertical frame.
- Can't use with Side Cover.

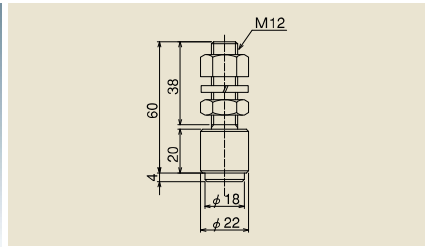
# Steel Sliding Door Hanger No.4 (#4)

150kg by 2-wheel / 300kg by 4-wheel



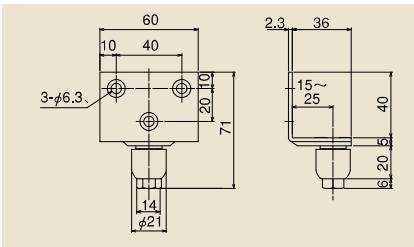
Guide Roller with Frame  
#3 GRAP

•With M8 x 65 countersunk bolt and Special nut.



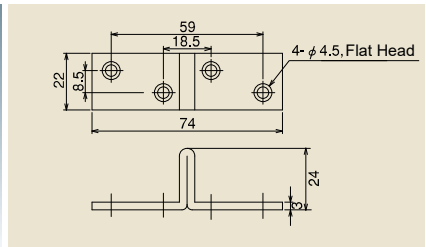
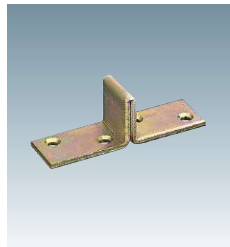
M12 Bolt Type Guide Roller  
#3 GRB12

•Common with #3  
•Roller is Polyacetal (Black Color)  
•Reinforced Type of #3GRB  
•Please use the Guide Roller in the place where the strength is required.



Retrofit Guide Roller  
#3 GRL

•Common with #3  
•Applicable door thickness: 30~50mm  
•With 3 pcs of Nominal dia: 5 x 25 countersunk tapping screw.  
•Make sure to fasten the roller tightly as it is temporary fixed state when shipped.



Bottom Stopper  
#3 GRS

•Common with #3  
•Mount the stopper in the internal groove on the Guide Rail so that it works as the stopper for Guide Roller and it's used for door positioning.  
•In case of the large impact force is expected, please use the stopper or stopper with rubber together and hit the door on the vertical frame.

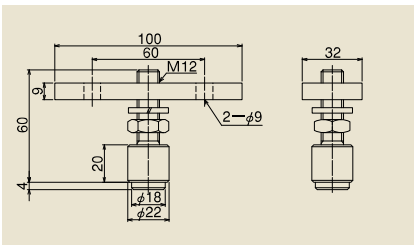
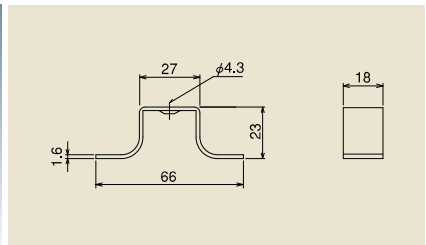
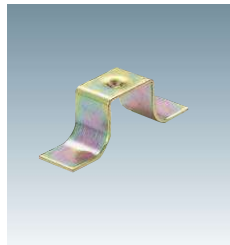


Plate Type Guide Roller  
#3 GRP12

•Common with #3  
•Roller is Polyacetal (Black Color)  
•Reinforced Type of #3GRP  
•Please use in the place where the strength is required.

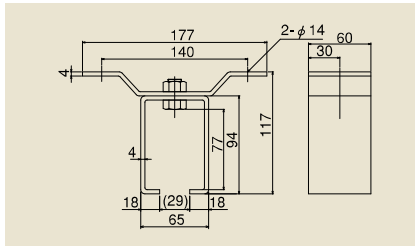
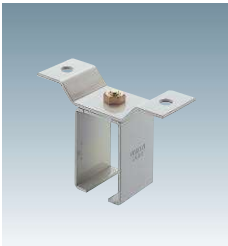


Guide Rail Anchor  
#3 GRA

•Common with #3  
•Please use this parts as Anchor for Guide Rail.

# Steel Sliding Door Hanger No.4 (#4)

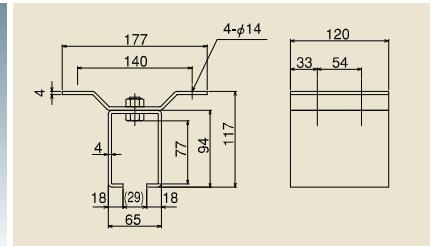
Standard Mounting Pitch of Bracket is 400~500mm



Ceiling Bracket  
(Single Track)

#4 OB

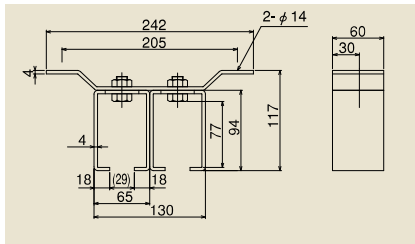
•Assembly bolt of box and Wing are all W1/2" countersunk bolt.  
•Recommended mounting Screw: M12



Rail Joint Bracket for  
Ceiling  
(Single Track)

#2 OBT

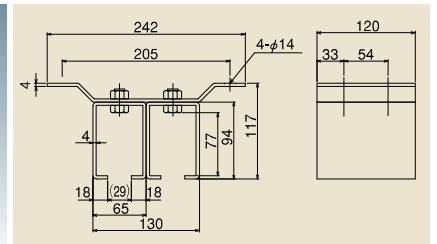
•Assembly bolt of box and Wing are all W1/2" countersunk bolt.  
•Recommended mounting Screw: M12



Ceiling Bracket  
(Double Track)

#4 OB2

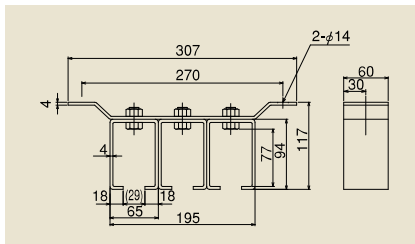
•Assembly bolt of box and Wing are all W1/2" countersunk bolt.  
•Recommended mounting Screw: M12



Joint Bracket for Ceiling  
(Double Track)

#4 OBT2

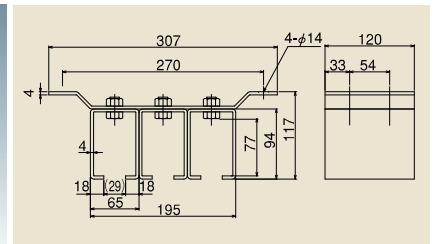
•Assembly bolt of box and Wing are all W1/2" countersunk bolt.  
•Recommended mounting Screw: M12



Ceiling Bracket  
(Triple Track)

#4 OB3

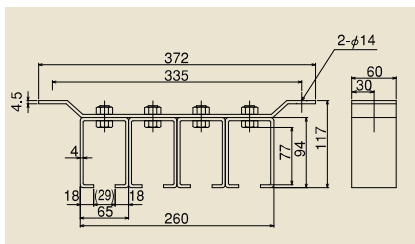
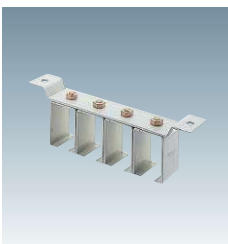
•Assembly bolt of box and Wing are all W1/2" countersunk bolt.  
•Recommended mounting Screw: M12



Joint Bracket for Ceiling  
(Triple Track)

#4 OBT3

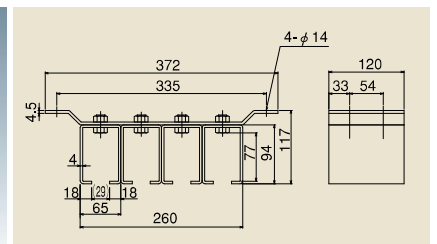
•Assembly bolt of box and Wing are all W1/2" countersunk bolt.  
•Recommended mounting Screw: M12



Ceiling Bracket  
(Four Track)

#4 OB4

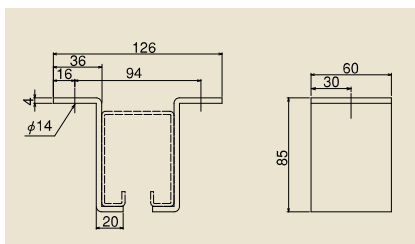
•Assembly bolt of box and Wing are all W1/2" countersunk bolt.  
•Recommended mounting Screw: M12



Joint Bracket for Ceiling  
(Four Track)

#4 OBT4

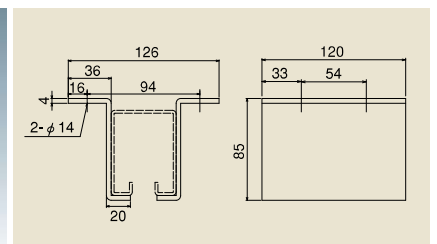
•Assembly bolt of box and Wing are all W1/2" countersunk bolt.  
•Recommended mounting Screw: M12



L Type Ceiling Bracket

#4 OBL

•Used for preventing the gap between Rail and Ceiling Bracket.  
•Recommended mounting Screw: M12



L Type Joint Bracket  
for Ceiling

#4 OBLT

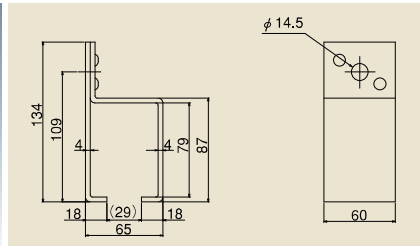
•Used for preventing the gap between Rail and Ceiling Bracket.  
•Recommended mounting Screw: M12

# Steel Sliding Door Hanger No.4 (#4)

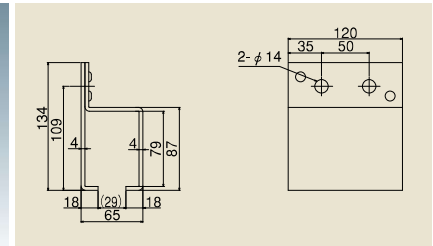
150kg by 2-wheel / 300kg by 4-wheel

Standard Mounting Pitch of Bracket is 400~500mm

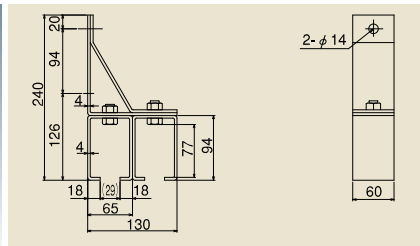
#4



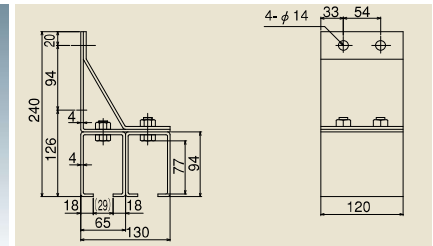
Rail Joint Bracket for Wall (Single Track)  
#4 SB  
•Recommended mounting Screw: M12



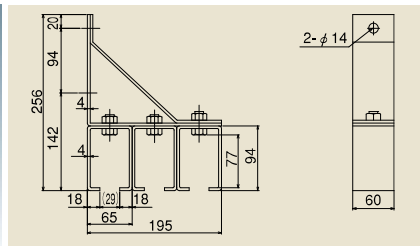
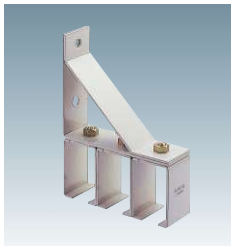
Rail Joint Bracket for Wall (Single Track)  
#4 SBT  
•Recommended mounting Screw: M12



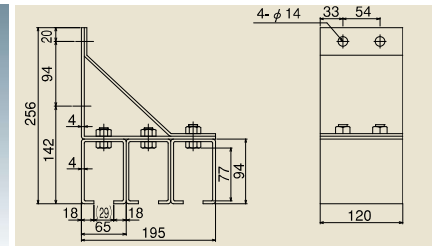
Wall Bracket (Double Track)  
#4 SB2  
•Assembly bolt of box and Stay are all W1/2" countersunk bolt.  
•Recommended mounting Screw: M12



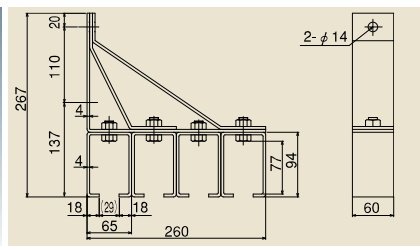
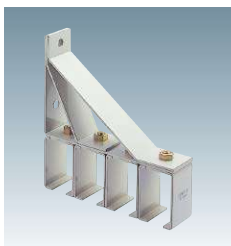
Rail Joint Bracket for Wall (Double Track)  
#4 SBT2  
•Assembly bolt of box and Stay are all W1/2" countersunk bolt.  
•Recommended mounting Screw: M12



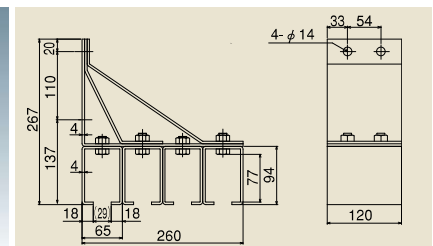
Wall Bracket (Triple Track)  
#4 SB3  
•Assembly bolt of box and Stay are all W1/2" countersunk bolt.  
•Recommended mounting Screw: M12



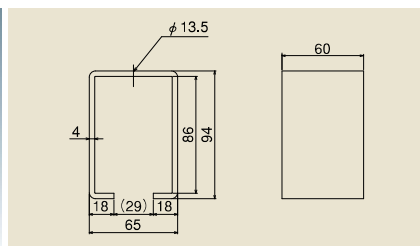
Rail Joint Bracket for Wall (Triple Track)  
#4 SBT3  
•Assembly bolt of box and Stay are all W1/2" countersunk bolt.  
•Recommended mounting Screw: M12



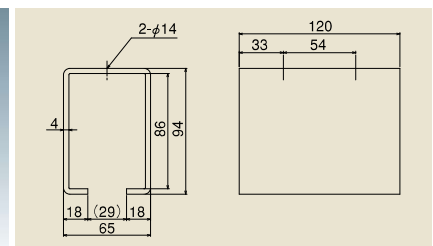
Wall Bracket (Four Track)  
#4 SB4  
•Assembly bolt of box and Stay are all W1/2" countersunk bolt.  
•Recommended mounting Screw: M12



Rail Joint Bracket for Wall (Four Track)  
#4 SBT4  
•Assembly bolt of box and Stay are all W1/2" countersunk bolt.  
•Recommended mounting Screw: M12



Wall Bracket #4 BOX  
•Please use the W1/2" or M12 countersunk bolt for installation.



Rail Joint Bracket for Wall #4 TBOX  
•Please use the W1/2" or M12 countersunk bolt for installation.