

Steel Sliding Door Hanger No.3 (#3)

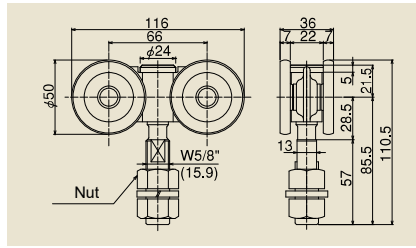
80kg by 2-Wheel / 150kg by 4-Wheel



2-Wheel

#3 4WH

Door Weight: Up to 20kg/2 pcs



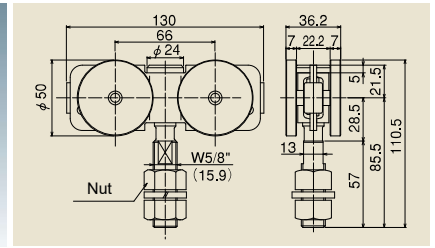
- Adapt Oil less bearing.
- In case of used frequently, please use #2 4WH-B 4-wheel with bearing.



4-Wheel with Bearing
[Flexible Type]

#3 4WH-BN

Door Weight: Up to 150kg/2 pcs

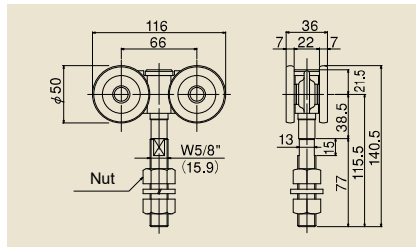


- Parts that is used by sandwiching a squared timber with nut.
- Adapt High performance bearing.



Wheel With Long Bolt
#3 4WH-1LB

Door Weight: Up to 20kg/2 pcs



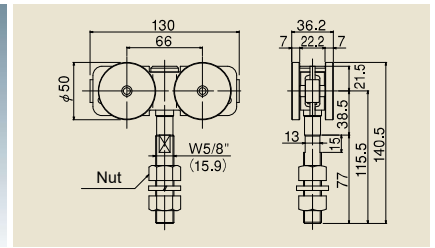
- Parts that is used by sandwiching a squared timber with nut.
- Adapt Oil less bearing.



4-Wheel with Bearing
[Flexible Type]
With Long Bolt

#3 4WH-BN-1LB

Door Weight: Up to 150kg/2 pcs

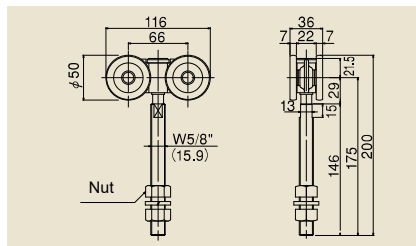


- Parts that is used by sandwiching a squared timber with nut.
- Adapt High performance bearing.



Wheel With Long Bolt
#3 4WH-2LB

Door Weight: Up to 150kg/2 pcs



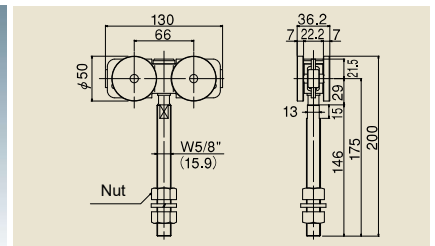
- Parts that is used by sandwiching a squared timber with nut.
- Adapt Oil less bearing.



4-Wheel with Bearing
[Flexible Type]
With Long Bolt

#3 4WH-BN-2LB

Door Weight: Up to 150kg/2 pcs

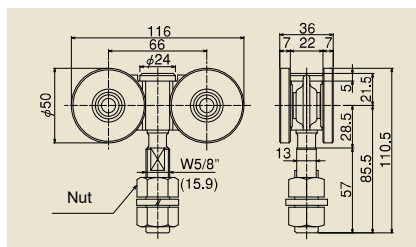


- Parts that is used by sandwiching a squared timber with nut.
- Adapt High performance bearing.



4-Wheel with Bearing
#3 4WH-B

Door Weight: Up to 150kg/2 pcs

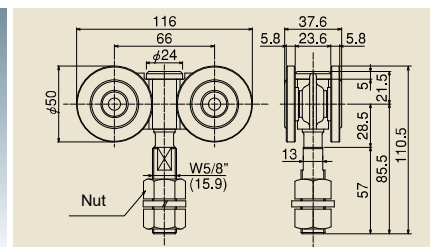


- Adapt High performance bearing(#608ZZ).



Wheel with Soundproofing
#3 4WH-QN

Door Weight: Up to 150kg/2 pcs

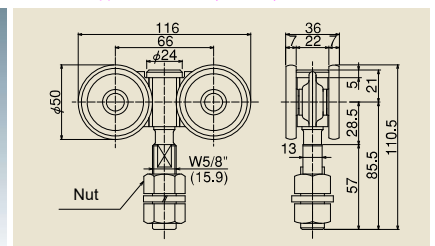


- Increase the quietness by adapting the Polyacetal resin.
- Adapt Oil less bearing.
- In case of used frequently, please use #2 4WH-B 4-wheel with bearing.
- For the wheel dropout and door positioning, please use the door stopper with rubber (#3-CSQ)



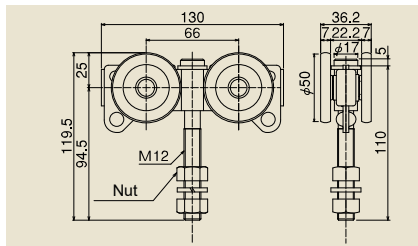
N Type 4-Wheel
#3 4WH-N

Door Weight: Up to 120kg/2 pcs



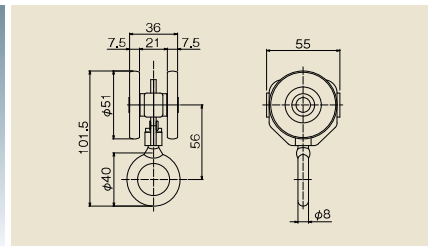
- Use the Pressed steel wheel.
- Adapt Oil less bearing.

80kg by 2-wheel / 150kg by 4-wheel



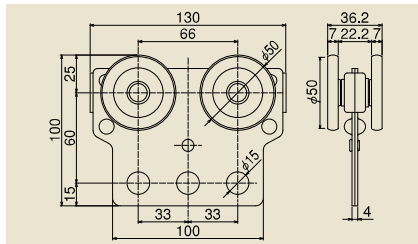
Door Weight: Up to 75kg/1 pc

- By the bolt rolling freely, it can change the direction of hanging object freely.
- Adapt Oil less bearing.
- Not applicable for Curb Rail.
- Not applicable for Rail holder, Apron and Plate.



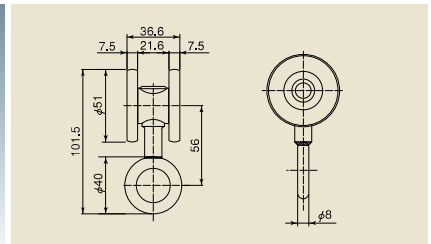
Door Weight: Up to 40kg/1 pc

- As the Spec for wheels not hitting each other, the surface of wheel is not scratched.
- Adapt in house bearing.
- Not applicable for Rail holder.



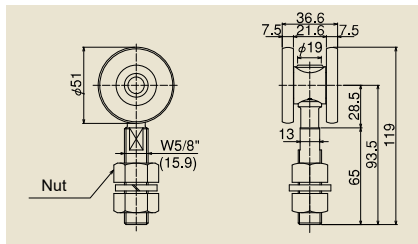
Door Weight: Up to 75kg/1 pc

- Optimum for hanging Air-tool and Electronic-tool by the hole of balancer.
- Adapt Oil less bearing.
- Not applicable for Curb Rail.



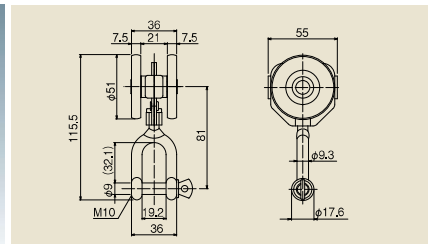
Door Weight: Up to 40kg/1 pc

- Please use this Hanger in the Rail that has a Rail holder.
- Adapt in house bearing.



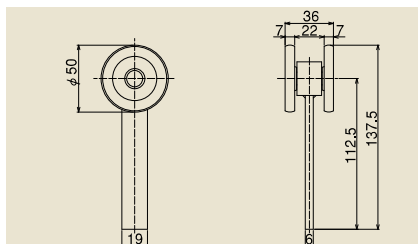
Door Weight: Up to 80kg/2 pcs

- Bolt with retaining processing.
- Adapt a house bearing.
- Applicable for Curb Rail. Please use 4-wheel in case of using for straight movement of the door.



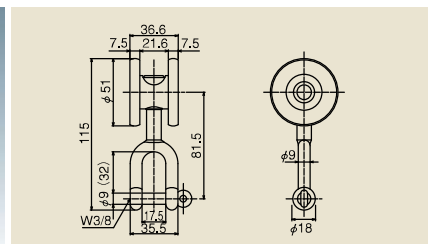
#3 2WHSY2

- As the Spec for wheels not hitting each other, the surface of wheel is not scratched.
- Adapt in house bearing.
- Not applicable for Rail holder.



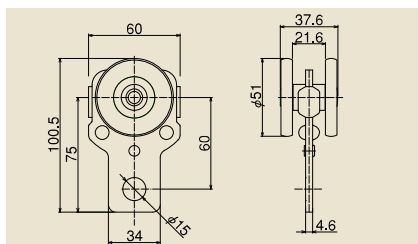
#3 2WH-S

- 2-wheel with direct welding type.
- Not applicable for Curb Rail.



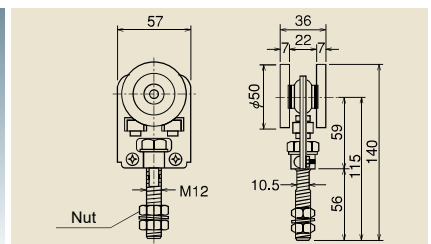
#3 2WHSY

- Please use this Hanger in the Rail that has a Rail holder.
- Adapt in house bearing.



Door Weight: Up to 40kg/1 pc

- Adapt house bearing.
- Not applicable for Rail holder.



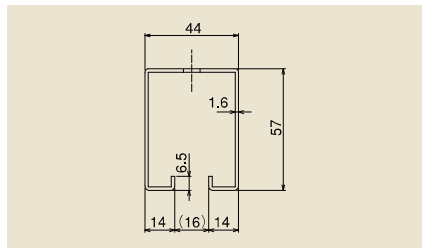
Door Weight: Up to 30kg/1 pc

- Adapt Oil less bearing.
- Not applicable for Curb Rail.
- Not applicable for Rail holder, Apron and Plate.

Steel Sliding Door Hanger No.3 (#3)



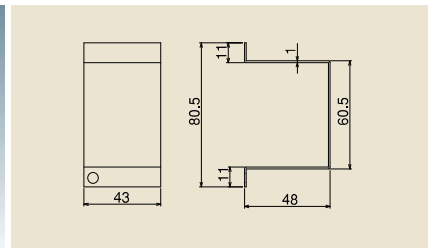
Hanger Rail
#2 HR



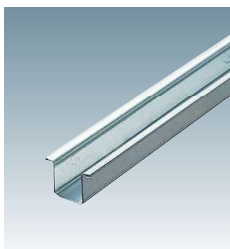
- Rail Length: 1820, 2730, 3640, 4550mm
- Painting Color is Munsell No. 5Y7/1
- Powder coating finish for 1820, 2730, 3640mm Urethane coating finish for 4550mm



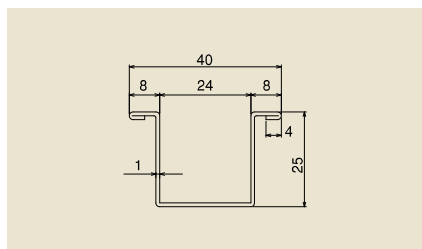
Side Cover
#3 STP



- Rail Edge Cover for preventing the Rail gap.
- It's not for stopping the Wheel. In case of stopping the Wheel, please use the Stopper.
- Not applicable for Ceiling and Wall Rail bracket.



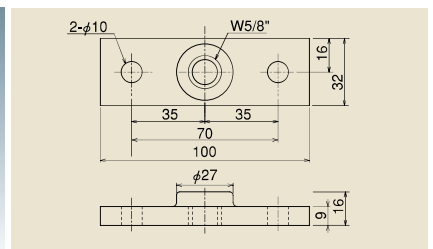
Guide Rail
#3 GR



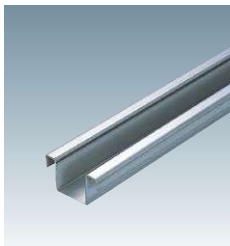
- Rail Length: 1820, 2730, 3640mm
- Curb Rail differs in the section shape.



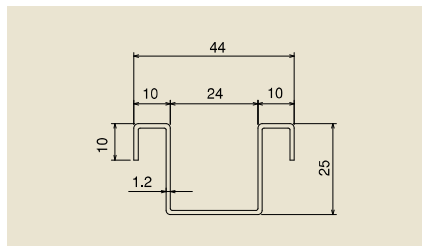
Plate
#3 PL



- Parts for connecting the bolt of 2 or 4-Wheel with the steel door.



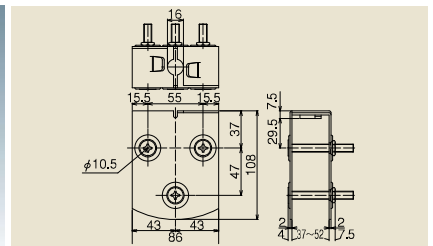
Guide Rail with Rip
#3 NGR



- Rail Length: 1820, 2730, 3640mm
- Downward Lips on both side end can be used as Anchor.



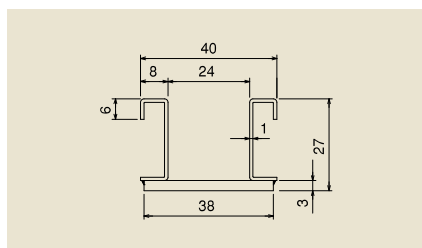
Apron
#3 AP



- With M8 x 65 Countersunk Bolt & Nut.
- Parts for connecting the bolt of 2 or 4-Wheel to wooden door.



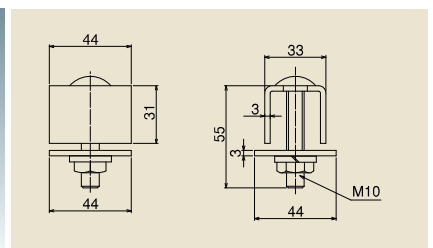
Curb Guide Rail
#3 GR920R



- Material: SPHC (Lacquer-finish, Munsell No. 5Y7/1)
- Standard R: R920 (1/4 Circle)
- Made to order except item of standard stock.



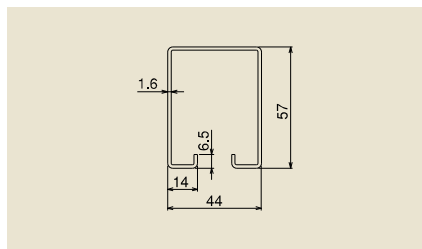
Stopper
#3 CS



- In case the large impact force is expected, please use the bottom stopper with this stopper together and hit the door on the vertical frame.



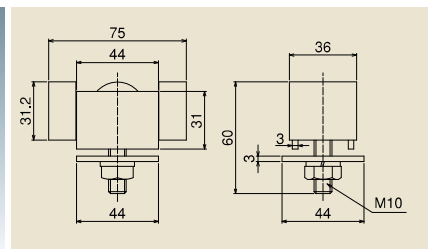
Curb Rail
#3 HR920R



- Material: SGHC (Baking finish, Munsell No. 5Y7/1)
- Standard R: R920 (1/4 Circle)
- Made to order except item of standard stock.



Stopper with Rubber
#3 CSQ

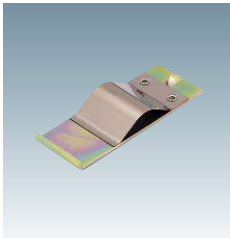


- Used for preventing the Wheel dropout and Door positioning.
- Please make sure to use this stopper in using 4-Wheel with Soundproofing.

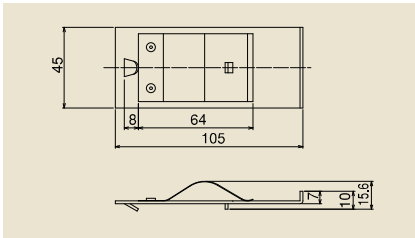
Steel Sliding Door Hanger No.3 (#3)

80kg by 2-wheel / 150kg by 4-wheel

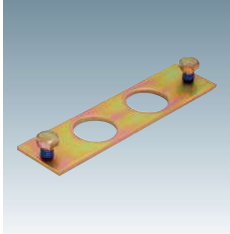
#3



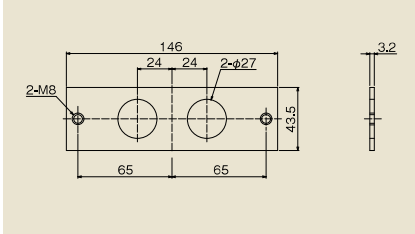
Joint Clamp
#3 RJ



- Parts for preventing the gap of Hanger rail to use the hole of Rail edge and bracket.
- Unavailable for Curb Rail and Ceiling Bracket.



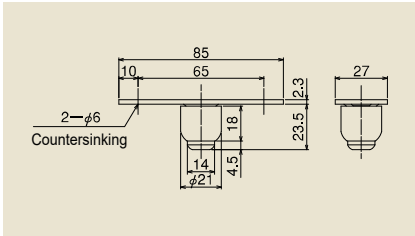
Rail Connection Plate
#3 RP



- 2 pcs of M8 bolt
- Prevent for backlash of rails and can connect the rails without welding.
- Applicable for Curb Rail, Wall and Ceiling Brackets.



Guide Roller
#3 GRO



- In case the strength is required, please use #3GRP12

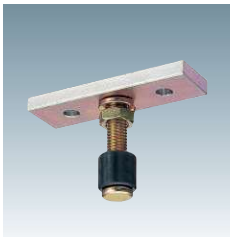
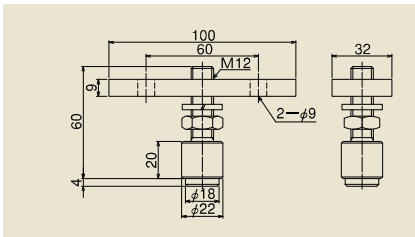
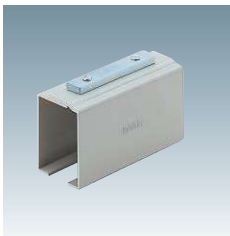


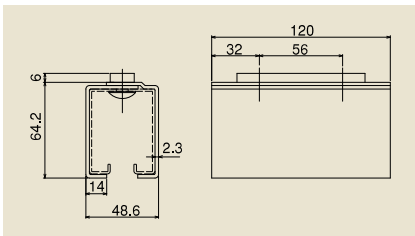
Plate Type Guide Roller
#3 GRP12



- Roller is Polyacetal (Black Color)
- Reinforced Type of #3GRO
- Please use in the place where the strength is required.



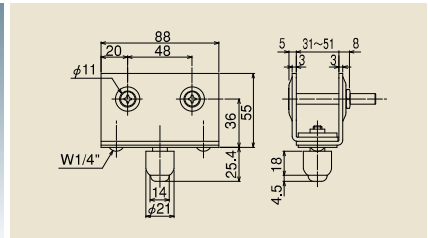
Rail Holder
#3 RH



- Connection parts of rails between brackets.
- Short length rails can be connected in advance and installed as long length Rail.
- Unapplicable for Curb Rail and Ceiling Bracket.
- Assembly bolt: M8 x 12 Truss Screw.



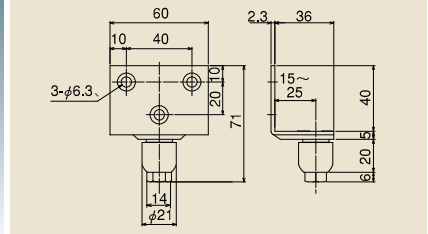
Guide Roller with Frame
#3 GRAP



- With M8 x 65 countersunk bolt and Special nut.



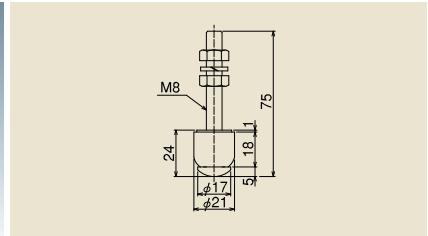
Retrofit Guide Roller
#3 GRL



- Applicable door thickness: 30~50mm
- With 3 pcs of Nominal dia: 5 x 25 countersunk tapping screw



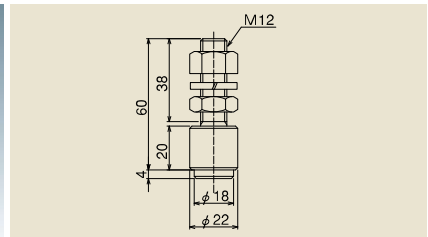
Bolt Type Guide Roller
#3 GRB



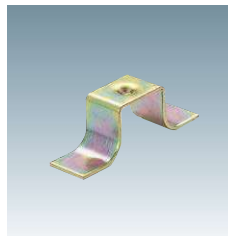
- In case the strength is required, please use #3GRP12



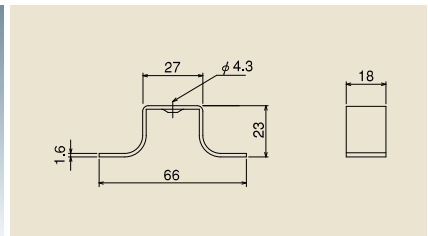
M12 Bolt Type Guide Roller
#3 GRB12



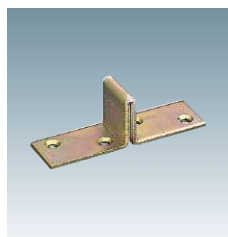
- Roller is Polyacetal (Black Color)
- Reinforced Type of #3GRB
- Please use the Guide Roller in the place where the strength is required.



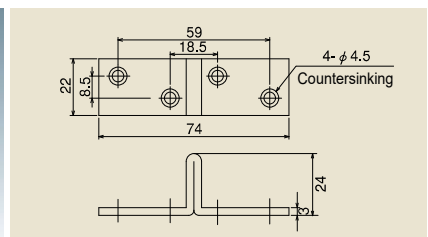
Guide Rail Anchor
#3 GRA



- Please use this parts as Anchor for Guide Rail.

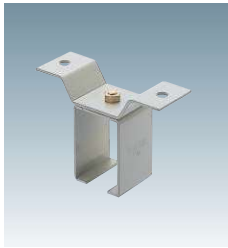


Bottom Stopper
#3 GRS

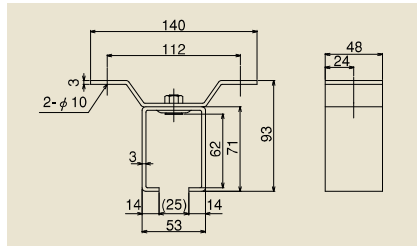


- Mount the stopper in the internal grooved on the Guide Rail so that it works as the stopper for Guide Roller and it's used for door positioning.
- In case of the large impact force is expected, please use the stopper or stopper with rubber together and hit the door on the vertical frame.

Steel Sliding Door Hanger No.3 (#3)



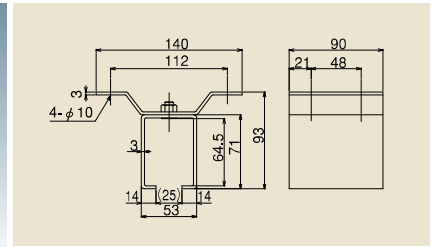
Ceiling Bracket
(Single Track)
#3 OB



•Assembly bolt of box and Wing are all W5/16" countersunk bolt.
•Recommended mounting Screw: M8



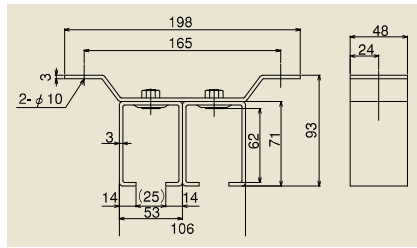
Rail Joint Bracket for Ceiling
(Single Track)
#3 OBT



•Assembly bolt of box and Wing are all W5/16" countersunk bolt.
•Recommended mounting Screw: M8



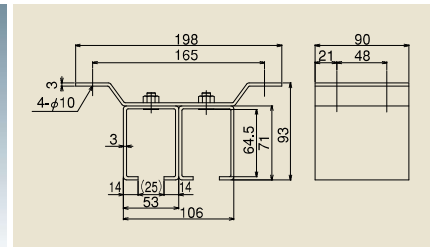
Ceiling Bracket
(Double Track)
#3 OB3



•Assembly bolt of box and Wing are all W5/16" countersunk bolt.
•Recommended mounting Screw: M8



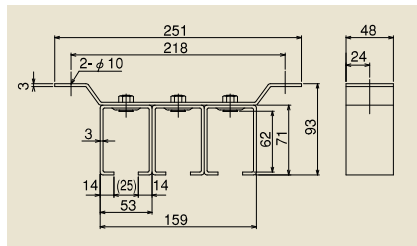
Joint Bracket for Ceiling
(Double Track)
#3 OBT2



•Assembly bolt of box and Wing are all W5/16" Flat head bolt.
•Recommended mounting Screw: M8



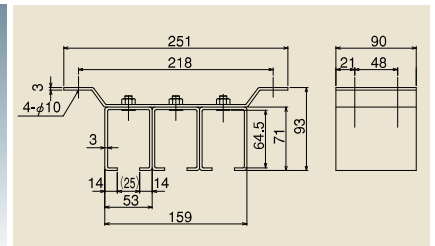
Ceiling Bracket
(Triple Track)
#3 OB3



•Assembly bolt of box and Wing are all W5/16" countersunk bolt.
•Recommended mounting Screw: M8



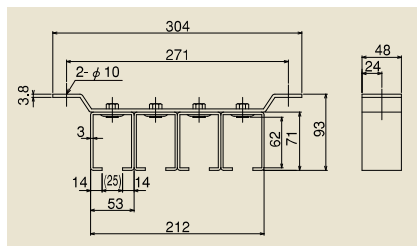
Joint Bracket for Ceiling
(Triple Track)
#3 OBT2



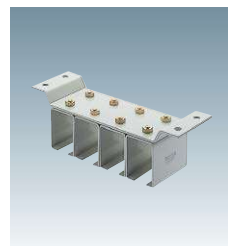
•Assembly bolt of box and Wing are all W5/16" countersunk bolt.
•Recommended mounting Screw: M8



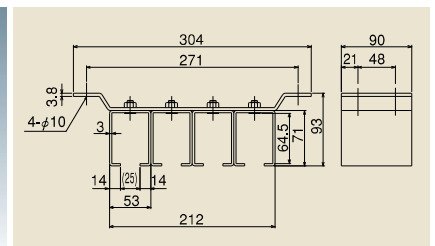
Ceiling Bracket
(Four Track)
#3 OB4



•Assembly bolt of box and Wing are all W5/16" Flat head bolt.
•Recommended mounting Screw: M8



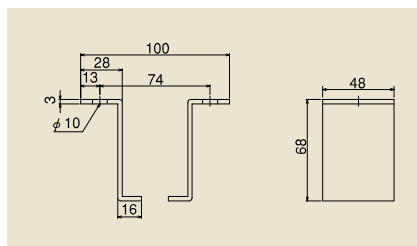
Joint Bracket for Ceiling
(Four Track)
#3 OBT4



•Assembly bolt of box and Wing are all W5/16" countersunk bolt.
•Recommended mounting Screw: M8



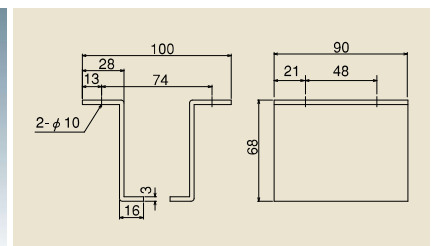
L Type Ceiling Bracket
#3 OBL



•Used for preventing the gap between Rail and Ceiling Bracket.
•Recommended mounting Screw: M8



L Type Joint Bracket for Ceiling
#3 OBLT

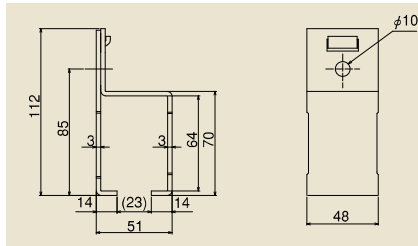


•Used for preventing the gap between Rail and Ceiling Bracket.
•Recommended mounting Screw: M8

Steel Sliding Door Hanger No.3 (#3)

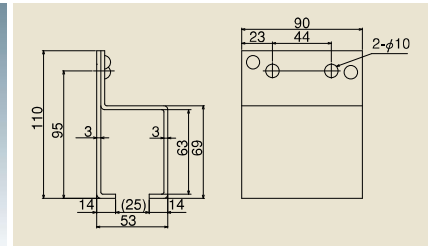
80kg by 2-wheel / 150kg by 4-wheel

3



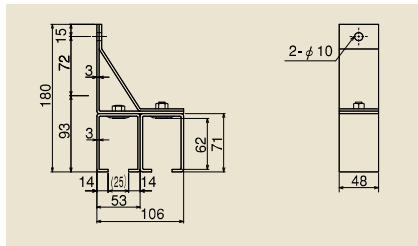
Rail Joint Bracket for Wall
(Single Track)
#3 SB

- Mounting hole position is different from Rail Joint Bracket for Wall.
- Recommended mounting Screw: M8



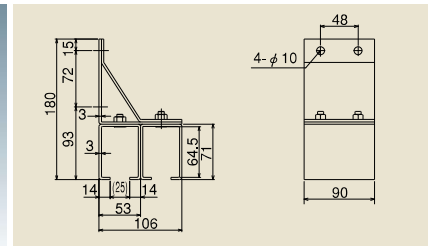
Rail Joint Bracket for Wall
(Single Track)
#3 SBT

- Mounting hole position is different from Wall Bracket.
- Recommended mounting Screw: M8



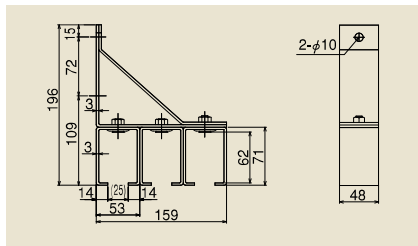
Wall Bracket
(Double Track)
#3 SB2

- Assembly bolt of box and Stay are all W5/16" countersunk bolt.
- Recommendable Screw: M8



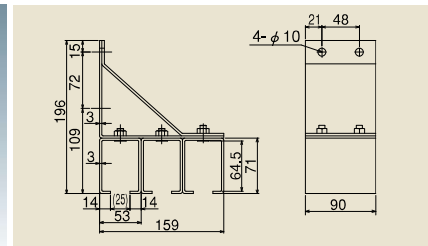
Rail Joint Bracket for Wall
(Double Track)
#3 SBT2

- Assembly bolt of box and Stay are all W5/16" countersunk bolt.
- Recommended mounting Screw: M8



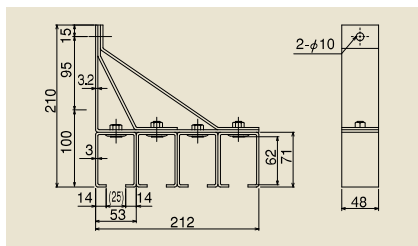
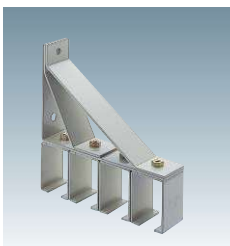
Wall Bracket
(Triple Track)
#3 SB3

- Assembly bolt of box and Stay are all W5/16" countersunk bolt.
- Recommended mounting Screw: M8



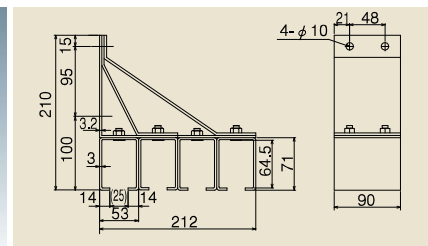
Rail Joint Bracket for Wall
(Triple Track)
#3 SBT3

- Assembly bolt of box and Stay are all W5/16" countersunk bolt.
- Recommended mounting Screw: M8



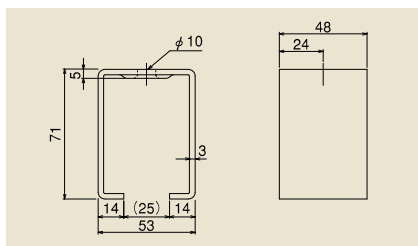
Wall Bracket
(Four Track)
#3 SB3

- Assembly bolt of box and Stay are all W5/16" countersunk bolt.
- Recommended mounting Screw:



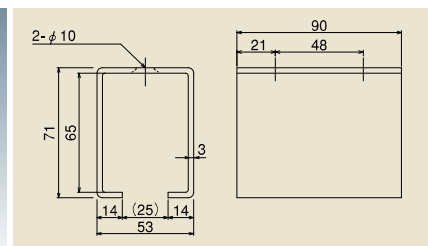
Rail Joint Bracket for Wall
(Four Track)
#3 SBT4

- Assembly bolt of box and Stay are all W5/16" countersunk bolt.
- Recommended mounting Screw: M8



Wall Bracket
#3 BOX

- Please use the W5/16" or M8 countersunk bolt for installation.



Rail Joint Bracket for Wall
#3 TBOX

- Please use the W5/16" or M8 countersunk bolt for installation.