

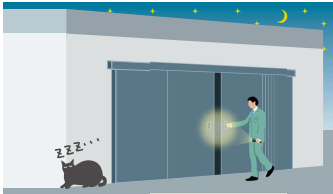
Sliding Door Hanger

Newton 10(N10)

Main features of Newton series(N10, N20, N40)

1 Increased quietness

Noise 20% down by processing the resin material on the outer circumference of Door Wheel.



2 Meter screw

Adapt meter screw considering to market liquidity.

3 Flexible wheel axis

Wheel axis designed for getting load equally works flexibly even though door leans (Front, back, left and right).
Not only 2 wheel, but 4 wheel can run on the Curb rail.

Check
the movie

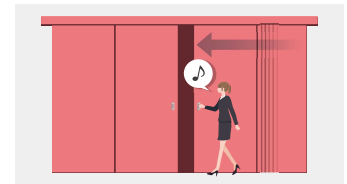


4 Without Hexavalent chromium

Use of the materials not to include Hexavalent chromium considering to the environment.

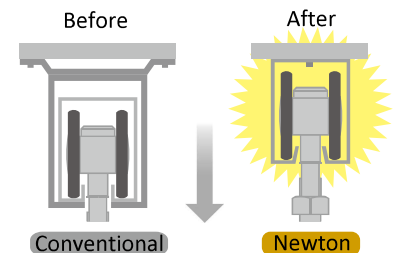
5 Smooth runnability

Adapt a axle-bearing and resin materials on the outer circumference of Door Wheel.
Also, realize Smooth runnability by contact less between Door Wheel and Rail.
This smooth runnability helps women open the door in light power.

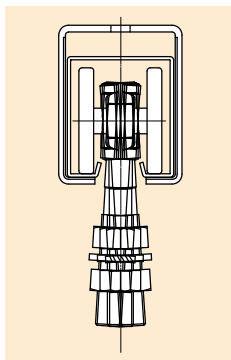


6 High-strength materials used for rail

Can wheel mounting directly on the rail by High-strength materials.
*N40 for heavy weight can't be mounted directly to Hanger rail.



Newton 10(Load weight 1,000N(About 100kg))



*Image of Flexible wheel axis

Door Hanger with increased Quietness and Smooth open & close

Loading capacity: 1000N(about 100kg) at two of 4-wheels per unit door.
600N(about 60kg) at two of 2-wheels per unit door.
300N(about 30kg) at one trolley 2-wheel.

- Medium weight model between #2 and #3 door hanger.
The name comes from international standard unit(SI)
- Hanger rail has high durability and light weight by high strength surface treated steel sheet.
- Wheel out side is made of resin. The hanger rail designed so that inside wall of wheel and rail edges do not touch. Therefore wheel running is smooth and quiet.
- As the hanging bolt is designated to be flexible and respond against any inclination of door or hanging tools, each wheels receives equal loading.
The wheel is available for R=600mm curved rail.
- Brackets are processed to avoid any scratch during installation job.
- 4 wheel and 2 wheel are provided to hang door and tools as well as semi-finished goods.
- Each parts has bar-code seal for simplifying the inventory control.

⚠ All of Hanger Rail, Rip Guide Rail and Bolt for hanging wheel is Millimeter size and not compatible with conventional steel door hanger parts.

Comparison date of Door weight 980N(100kg) (Our domestic research)

*Hanging at two of 4-wheels

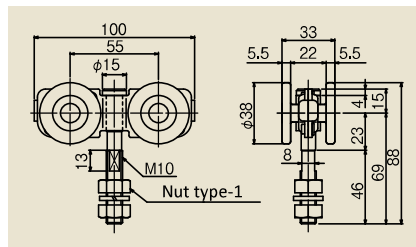
Sliding door hanger	Force of Open & Close		Running noise(dB)	
	Initial value		Initial value	
Newton 10 N40	8.4N(0.9kgf)		46dB	
No. 3(#3)	41.2N(4.2kgf)		59dB	

Sliding Door Hanger Newton10(N10)

N10 Model



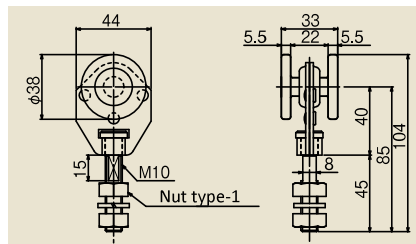
N10
4-wheel
N10-4WS



- Materials: SPHC (Trivalent Chromate), Resin, etc.
- Loading capacity up to 100kgs by 2pcs hanging per one door (approx. 1000N).
- Body shaft has bearing.
- Can also run on Curb Rail(R600).



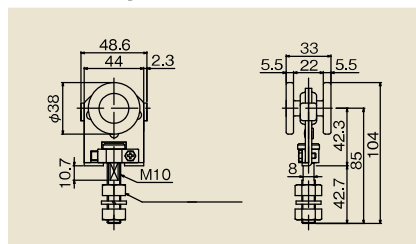
N10
2-wheel
N10-2WS



- Materials: SPHC(Trivalent Chromate), Resin, etc.
 - Loading capacity up to 100kgs by 2pcs hanging per one door (approx. 1000N).
 - Body shaft has bearing.
 - Changeable hanging bolt
 - Runnable on Curb Rail(R600).
- *Don't use to other models than N20 Hanger Rail(N20 Curb Rail).



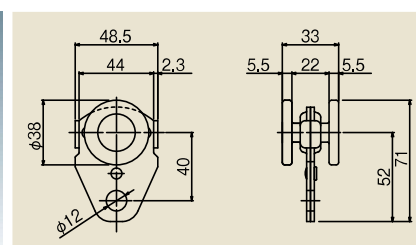
N10
2-wheel
(No.2 model)
N10-2WS2



- Materials: SPHC(Trivalent Chromate), Resin, etc.
 - Loading capacity up to 100kgs by 2pcs hanging per one door (approx. 1000N).
 - Body shaft has bearing.
 - Changeable hanging bolt
 - Runnable on Curb Rail(R600).
- *Don't use to other models than N20 Hanger Rail(N20 Curb Rail).



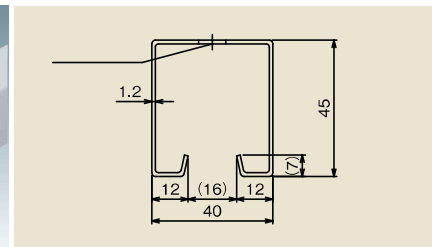
N10
Trolley 2 wheel
N10-2TR



- Materials: SPHC(Trivalent Chromate), Resin, etc.
 - Less than 500N(approx. 50kg) per one.
 - Suitable for hanging Air and Electronic tool.
 - Bearing used in the Fuselage axis.
 - Runnable on Curb Rail(R600).
 - Not use other than N20 Hanger Rail (N20 Curb Rail).
- *Can't use for Rail direct mounting specification.



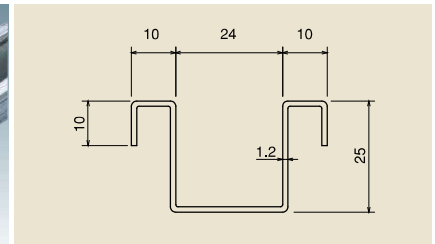
N10
Hanger rail
N10-HR



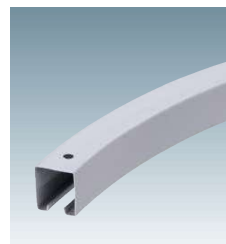
- Materials: SGH
- (Powder coating finish Munsell N7)
- Standard length 2000, 3000mm



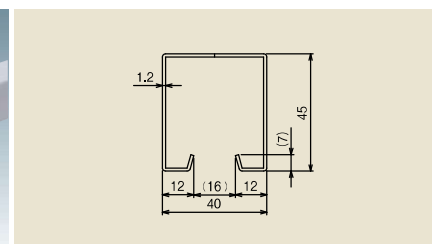
N10
Lip guide rail
N10-NGR



- Materials: SGCC
- Standard length 2000, 3000mm
- Both of bended edge works as Anchor.



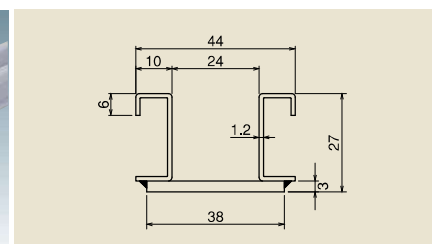
N10
Curve rail
N10-HR600R



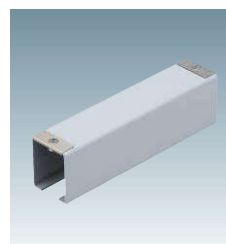
- Materials: SGC
- (Powder coating Munsell M7)
- Standard R: R600(1/4 circle)
- Cross-sectional shape is same with N20 standard hanger rail.
- Available more than R600



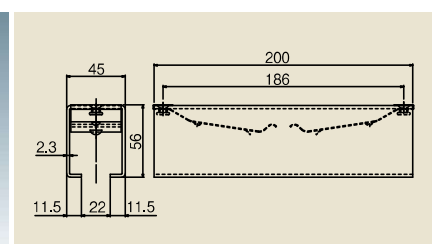
N20
Rip guide rail
N20-NGR600R



- Materials: SGC
- (lacquer-finished Munsell symbol N7)
- Standard R: R600
- Cross-sectional shape differ from N20 Rip Guide Rail.

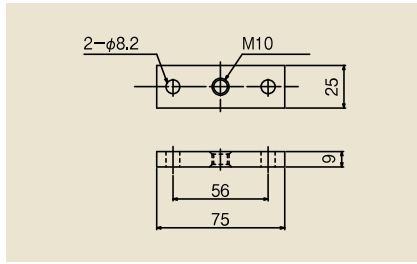


N10
Joint parts
N10-OJ



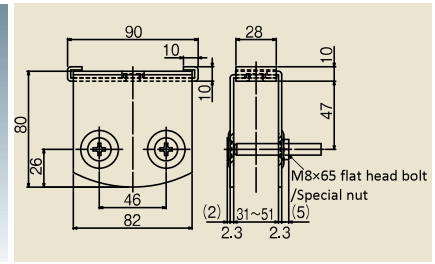
- Material: SPHC (Trivalent chrome), etc
- Connection parts of hanger rails between brackets.
- Unavailable to use with curve rail.
- Do not use with rails fixed ceiling directly.

Sliding Door Hanger Newton10(N10)



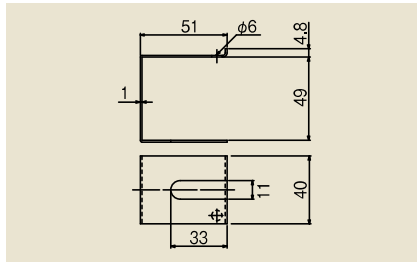
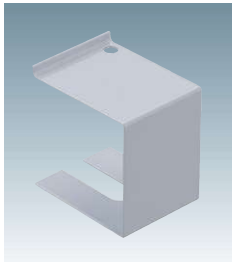
N10
Plate
N10-PL

- Materials: SS400 (Trivalent Chromate)
- Parts to connect bolt of wheel and steel door.
- Recommendable screw: M10



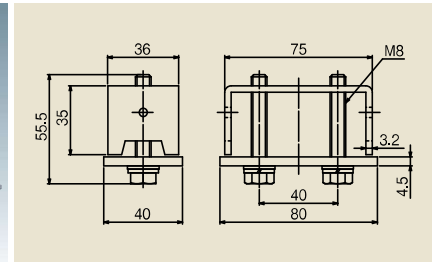
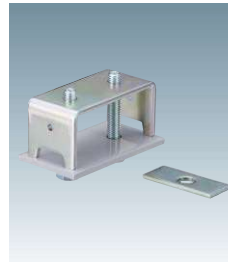
N10
Apron
N10-AP

- Materials: SPHC (Powder coating Munsell N7), etc.
- Parts to connect bolt of wheel and steel door.



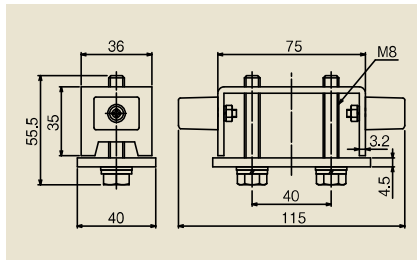
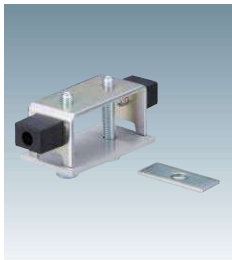
N10
Side cover
N10-SK

- Material: SPHC (Powder coating Munsell N7), etc.
- Parts to connect bolt of wheel and wooden door.
- Unable to use with N10-BOX & N10-TBOX.
- Unable to use with rail fixed ceiling directly.



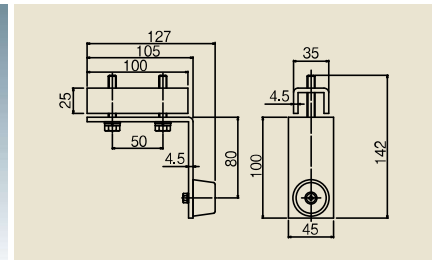
N10
Stopper
N10-CS

- Material: SPHC (Trivalent chrome), etc.
- Use for wheel stopper and adjustment door position.
- Better to stop door by frame if stopper get big impact.



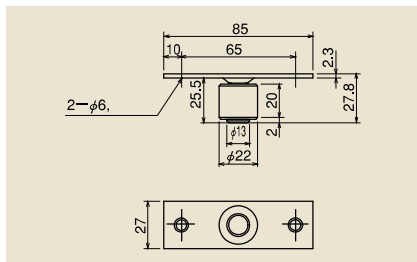
N10
Stopper with rubber cushion
N10-CSQ

- Material: SPHC (Trivalent chrome), Rubber (Black) etc.
- Use for wheel stopper and adjustment door position.
- Better to stop door by frame if stopper get big impact.



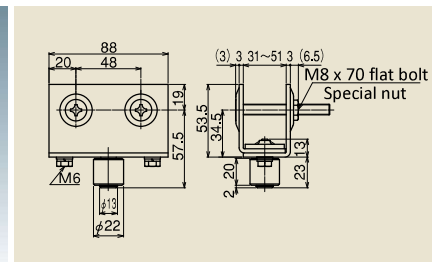
N10
Stopper below rail
N10-RCS

- Material: SPHC (Powder coating Munsell N7), Rubber (Black) etc.
- Install bottom stopper (option) together.
- Unable to use with curve rail.



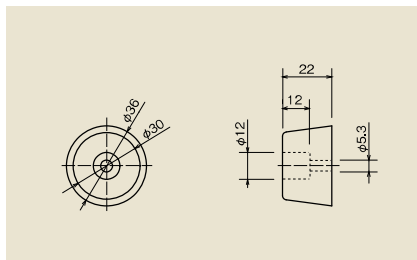
N20
Guide roller
N20-GRO

- Material: SPHC (Trivalent chrome), Resin etc.
- Recommendable screw: M5



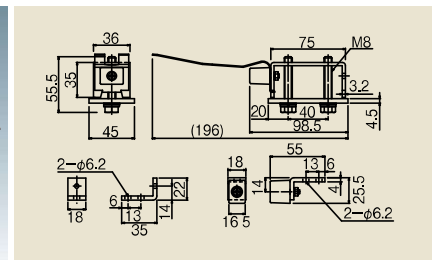
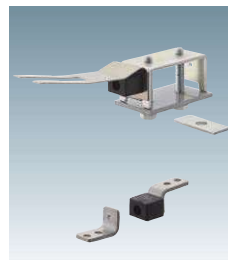
N10
Frame guide roller
N10-GRAP

- Material: SPHC (Powder coating Munsell N7), Resin etc.
- Recommendable screw: M5



N20
Rubber stopper
N20-CSG

- Material: Rubber (Black)
- Install on door frame
- Recommendable screw: M5



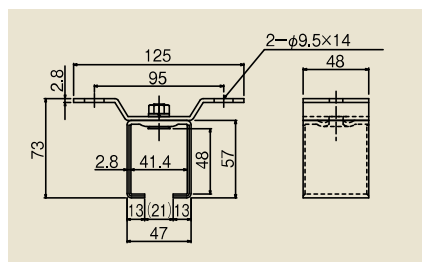
N10
Stopper with holder
N10-KCS

- Material: SPHC (Trivalent chrome), Rubber (Black) etc.
- Set of upper and bottom stopper
- Use for Bi-parting door.
- Unable to use with curve rail.
- Recommendable screw: M6

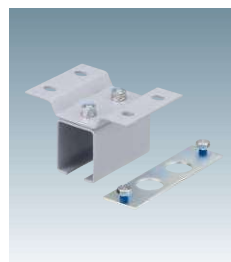
Sliding Door Hanger Newton10(N10)



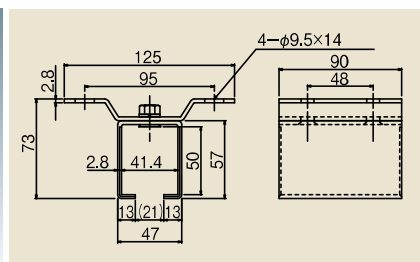
N10
Ceiling bracket
(single channel)
N10-OB



- Material: SPCC (Powder coating Munsell N7), etc.
- Bolt of box and wing: M8
- Recommendable screw: M8



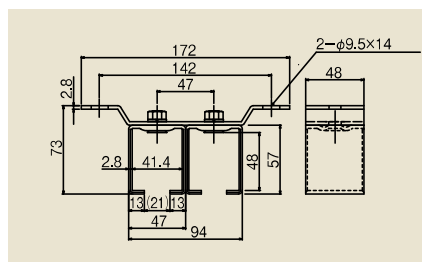
N10
Joint bracket for ceiling
(single channel)
N10-OBT



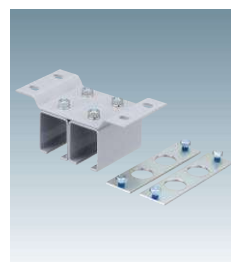
- Material: SPHC (Powder coating Munsell N7), etc.
- Joint parts for rail.
- With joint plate
- Bolt of box and wing: M8
- Recommendable screw: M8



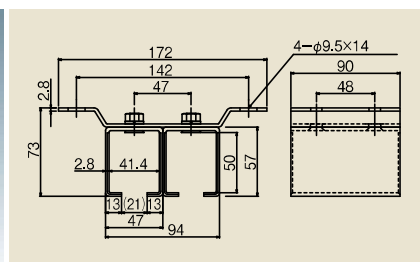
N10
Ceiling bracket
(double channel)
N10-OB2



- Material: SPCC (Powder coating Munsell N7), etc.
- Bolt of box and wing: M8
- Recommendable screw: M8



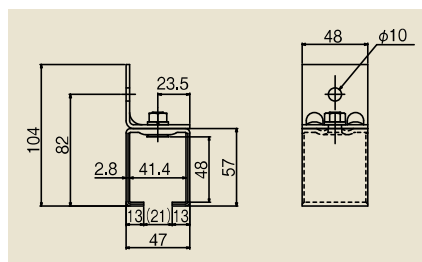
N10
Ceiling bracket
(double channel)
N10-OB2



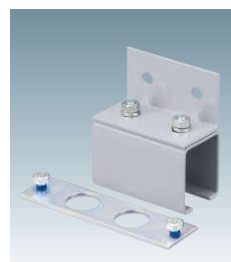
- Material: SPHC (Powder coating Munsell N7), etc.
- Joint parts for rail.
- With joint plate
- Bolt of box and wing: M8
- Recommendable screw: M8



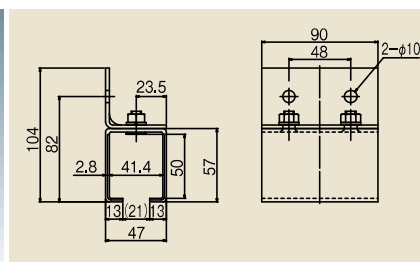
N10
wall bracket
(single channel)
N10-SB



- Material: SPCC (Powder coating Munsell N7), etc.
- Bolt of box and bracket: M8
- Recommendable screw: M8



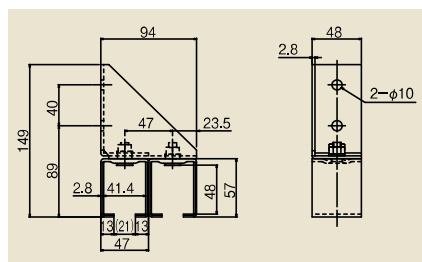
N10
Joint bracket for wall
(single channel)
N10-SBT



- Material: SPHC (Powder coating Munsell N7), etc.
- Joint parts for rail.
- With joint plate
- Bolt of box and wing: M8
- Recommendable screw: M8



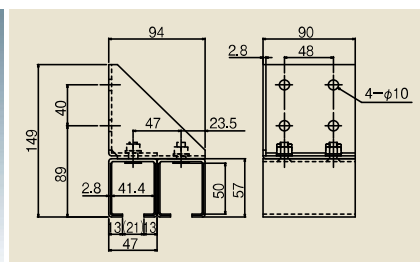
N10
wall bracket
(dual channel)
N10-SB2



- Material: SPCC (Powder coating Munsell N7), etc.
- Bolt of box and bracket: M8
- Recommendable screw: M8



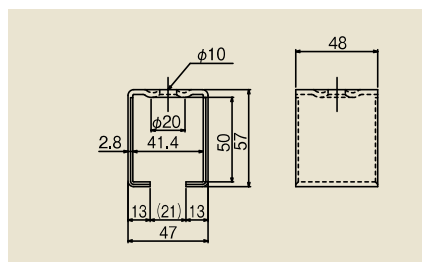
N10
Joint bracket for wall
(dual channel)
N10-SBT2



- Material: SPHC (Powder coating Munsell N7), etc.
- Joint parts for rail.
- With joint plate
- Bolt of box and wing: M8
- Recommendable screw: M8



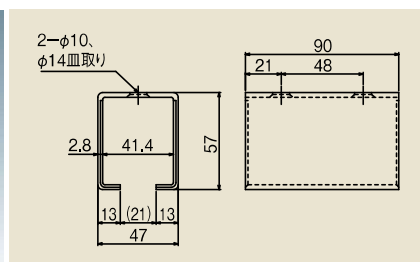
N10
Box bracket
N10-BOX



- Material: SPCC (Powder coating Munsell N7), etc.
- Recommendable screw: M8



N10
Joint bracket for box
N10-TBOX



- Material: SPHC (Powder coating Munsell N7), etc.
- Joint parts for rail.
- Recommendable screw: M8