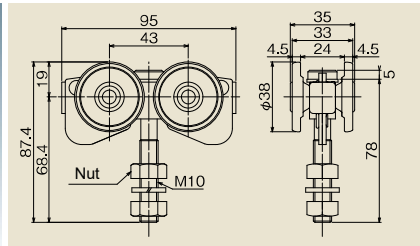


Steel Sliding Door Hanger No.2 (#2)

50kg by 2-Wheel / 70kg by 4-Wheel※

- Increase the quietness by adapting the Polyacetal resin to wheel.
- Adapt Oil less bearing to avoid lubrication.
- MTH2 (2-Wheel and 4-Wheel hanger) can be used to #2 Hanger rail by changing the wheel shape.

※ Use 2 pieces per panel

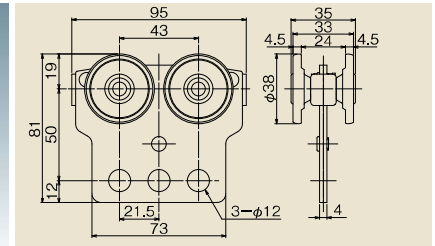


MTH2 Trolley 4-Wheel
MTH2-4WHTR

Endurable running: 50,000m
(In case of 35kg door weight hanging/2pc)
Endurable running: 100,000m
(In case of 25kg door weight hanging/2pc)

- Body: Steel (Uniqlo)
- Wheel: Polyacetal
- Bolt type with easy installation.
- Adapt Oil less bearing.
- Applicable for #2 Hanger Rail.
- Not applicable for R rail holder.

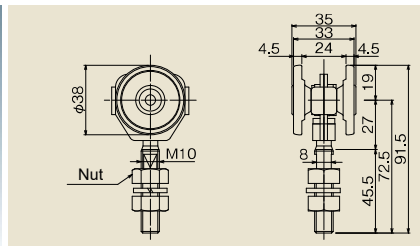
※ Please use N10 Plate for steel door and N10 Apron for wooden door to connect hanger with the door.



MTH2 Tool 4-Wheel
MTH2-4WHTU

Endurable running: 50,000m
(In case of 35kg door weight hanging/2pc)
Endurable running: 100,000m
(In case of 25kg door weight hanging/2pc)

- Body: Steel (Uniqlo)
- Wheel: Polyacetal
- Plate type that can hang a balancer.
- Adapt Oil less bearing.
- Applicable for #2 Hanger Rail.
- Not available for Curb Rail.

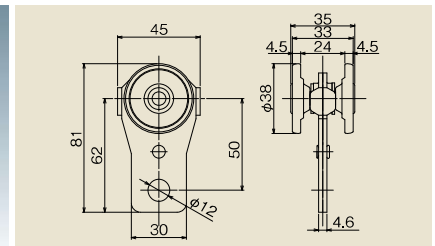


MTH2 2-Wheel
MTH2-2WH2

Endurable running: 50,000m
(In case of 25kg door weight hanging/2pc)
Endurable running: 100,000m
(In case of 15kg door weight hanging/2pc)

- Body: Steel (Trivalent Chromate)
- Wheel: Polyacetal
- Bolt type with easy installation.
- Adapt Oil less bearing.
- Applicable for #2 Hanger Rail & Curb Rail.
- Not available for Rail holder.

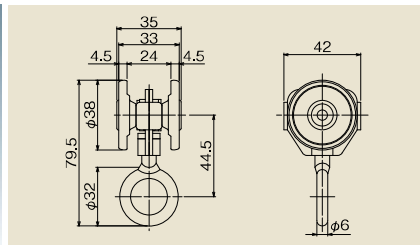
※ Please use N10 Plate for steel door and N10 Apron for wooden door to connect hanger with the door.



MTH2 Tool 2-Wheel
MTH2-2WHTU

Endurable running: 50,000m
(In case of 25kg door weight hanging/2pc)
Endurable running: 100,000m
(In case of 15kg door weight hanging/2pc)

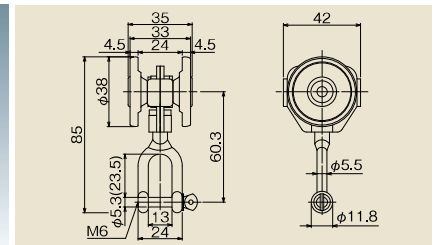
- Body: Steel (Uniqlo)
- Wheel: Polyacetal
- Plate type that can hang a balancer.
- Adapt Oil less bearing.
- Applicable for #2 Hanger Rail.
- Not available for Hanger Rail & Curb Rail.



MTH2 2-Wheel with Ring
MTH2-2WHL2

Endurable running: 50,000m
(In case of 25kg door weight hanging/2pc)
Endurable running: 100,000m
(In case of 15kg door weight hanging/2pc)

- Body: Steel (Trivalent Chromate)
- Wheel: Polyacetal
- Bolt type with easy installation.
- Adapt oil less bearing.
- As the Spec for wheels not hitting each other, no getting scratched on the surface and need for braking.
- Applicable for #2 Hanger Rail & Curb Rail.
- Not available for Rail holder.



MTH2 2-Wheel with Shackle
MTH2-2WHSY2

Endurable running: 50,000m
(In case of 25kg door weight hanging/2pc)
Endurable running: 100,000m
(In case of 15kg door weight hanging/2pc)

- Body: Steel (Trivalent Chromate)
- Wheel: Polyacetal
- Adapt Oil less bearing.
- As the Spec for wheels not hitting each other, no getting scratched on the surface and need for braking.
- Available for #2 Hanger Rail.
- Not available for Hanger Rail & Curb Rail.

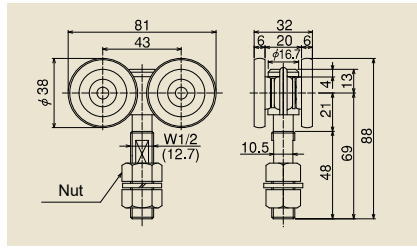
Steel Sliding Door Hanger No.2 (#2)

40kg by 2-Wheel / 70kg by 4-Wheel ※



4-Wheel
#2 4WH

Door Weight: Up to 40kg/2 pcs

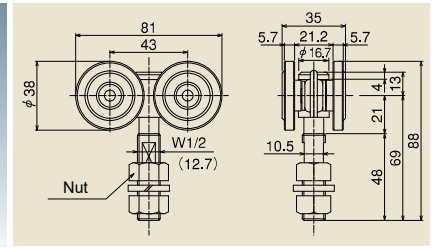


- Adapt Oil less bearing.
- In case of used frequently, please use #2 4WH-B 4-wheel with bearing.



4-Wheel with Soundproofing
#2 4WH-QN

Door Weight: Up to 70kg/2 pcs

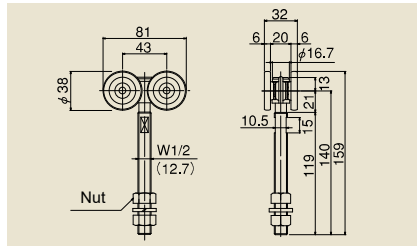


- Increase the quietness by adapting the Polyacetal resin.
- Adapt Oil less bearing.
- In case of used frequently, please use #2 4WH-B 4-wheel with bearing.
- For the wheel dropout and door positioning, please use the door stopper with rubber (#3-CSQ)



4-Wheel
With Long Bolt
#2 4WH-1LB

Door Weight: Up to 70kg/2 pcs

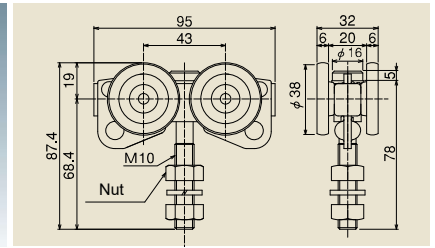


- Parts that is used by sandwiching a squared timber with nut.
- Adapt Oil less bearing.



Trolley 4-Wheel
#2 4WHTR

Door Weight: Up to 35kg/1 pc

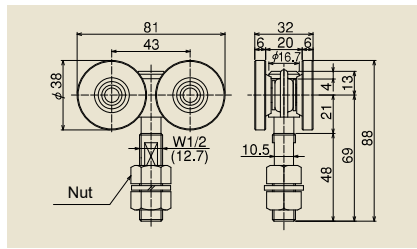


- By the bolt rolling freely, it can change the direction of hanging object freely.
- Adapt Oil less bearing.
- Not applicable for Curb Rail.
- Not applicable for Rail holder, Apron and Plate.



4-Wheel with Bearing
#2 4WH-B

Door Weight: Up to 70kg/2 pcs

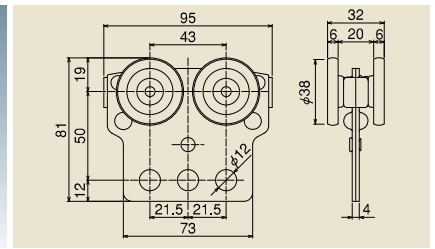


- Adapt High performance bearing.



Tool 4-Wheel with Bearing
#2 4WHTU

Door Weight: Up to 35kg/1 pc

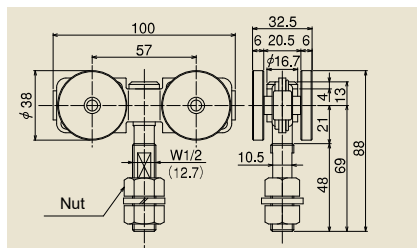


- Optimum for hanging Air-tool and Electronic-tool by the hole of balancer.
- Adapt Oil less bearing.
- Not applicable for Curb Rail.



4-Wheel with Bearing
[Flexible Type]
#2 4WH-BN

Door Weight: Up to 70kg/2 pcs

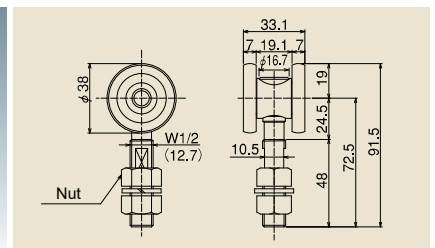


- Wheel Axis moves flexibility and 4-wheel always gets a load equally even if the hanging bolt is learning.
- Adapt High performance bearing.



Wheel with Bearing
#2 2WH

Door Weight: Up to 40kg/2 pcs

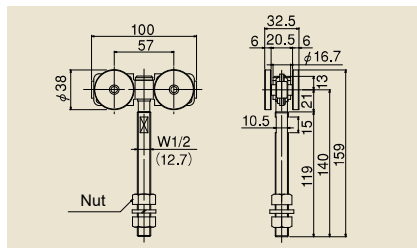


- Bolt with retaining processing.
- Adapt a house bearing.
- Applicable for Curb Rail. Please use 4-wheel in case of using for straight movement of the door.



Wheel with Bearing
[Flexible Type]
With Long Bolt
#2 4WH-BN-1LB

Door Weight: Up to 70kg/2 pcs

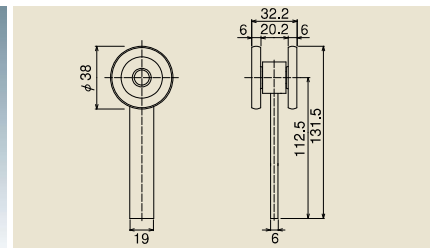


- The parts used for sandwiching a squared timber with nut.
- Adapt High performance bearing.



Wheel for Telescopic door
[Flexible Type]
#2 4WH-S

Door Weight: Up to 40kg/2 pcs



- 2-wheel with direct welding type.
- Not applicable for Curb Rail.

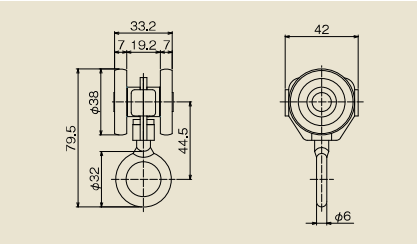
Steel Sliding Door Hanger No.2 (#2)

40kg by 2-wheel / 70kg by 4-wheel



2-Wheel with Ring Type 2
#2 2WHL2

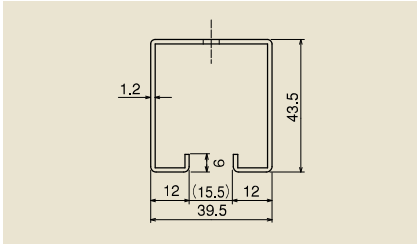
Door Weight: Up to 20kg/1 pc



•Please use this Hanger in the Rail that has a Rail holder.
•Adapt in house bearing.
•Not applicable for Rail holder.



Hanger Rail
#2 HR

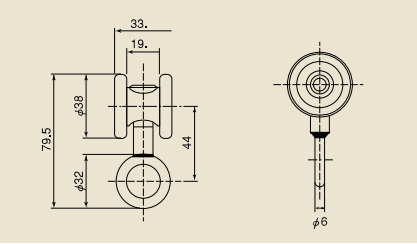


•Rail Length: 1820, 2730, 3640, 4550mm
•Painting Color is Munsell No. 5Y7/1
•Powder coating finish for 1820, 2730, 3640mm
Urethane coating finish for 4550mm

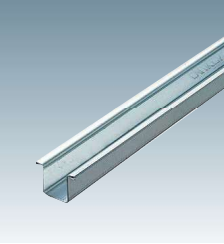


2-Wheel with Ring
#2 2WHL

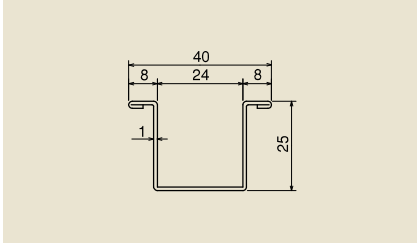
Door Weight: Up to 20kg/1 pc



•Please use this Hanger in the Rail that has a Rail holder.
•Adapt in house bearing.



Guide Rail
#3 GR

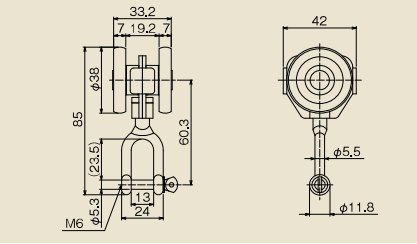


•Common parts with #3
•Rail Length: 1820, 2730, 3640mm
•Curb Rail differs in the section shape.

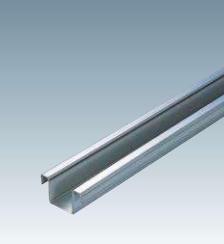


2-Wheel with #2 Shackle Type 2
#2 2WHSY2

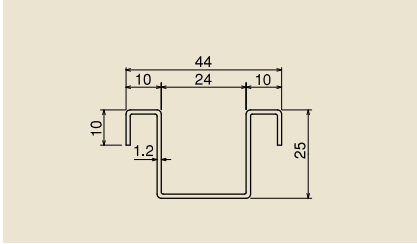
Door Weight: Up to 20kg/1 pc



•As the Spec for wheels not hitting each other, the surface of wheel is not scratched.
•Adapt in house bearing.
•Not applicable for Rail holder.



Guide Rail with Rip
#3 NGR

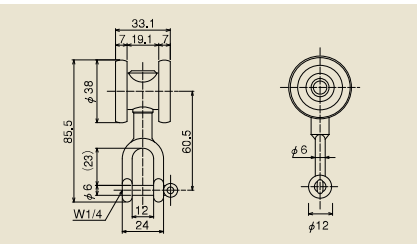


•Common parts with #3
•Rail Length: 1820, 2730, 3640mm
•Downward Lips on both side end can be used as Anchor.
•Curb Rail differs in the Section shape.



2-Wheel with Shackle
#2 2WHSY2

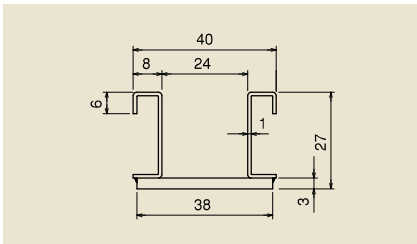
Door Weight: Up to 20kg/1 pc



•Please use this Hanger in the Rail that has a Rail holder.
•Adapt in house bearing.



Curb Guide Rail
#3 GR920R

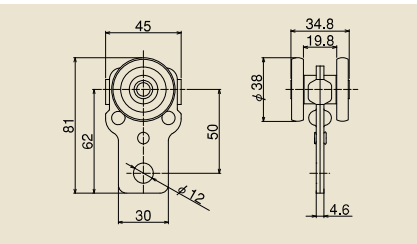


•Common parts with #3
•Material: SPHC (Lacquer-finish, Munsell No. 5Y7/1)
•Standard R: R920 (1/4 Circle)
•Made by order except item of standard stock.

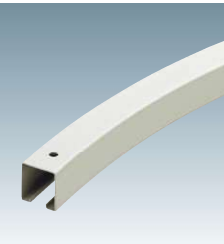


Tool
#2 2WHL2

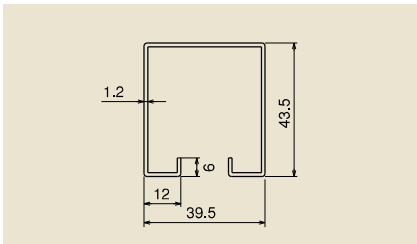
Door Weight: Up to 20kg/1 pc



•Adapt house bearing.
•R600 is Minimum Curb dimension that can run smoothly.
•Not applicable for Rail holder.



Tool
#2 2WHL2



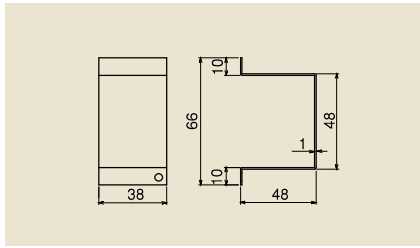
•Material: SGHC (Baking finish, Munsell No. 5Y7/1)
•Standard R: R920 (1/4 Circle)
•Made by order except item of standard stock.

Steel Sliding Door Hanger No.2 (#2)

Standard Mounting Pitch of Bracket is 400~500mm



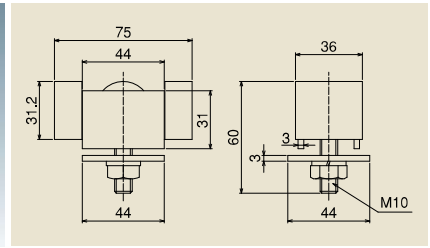
Side Cover
#2 STP



- Rail Edge Cover for preventing the Rail gap.
- It's not for stopping the Wheel. In case of stopping the Wheel, please use the Stopper.
- Not applicable for Ceiling and Wall Rail bracket.



Stopper with Rubber
#3 CSQ



- Common parts with #3
- Used for preventing the Wheel dropout and Door positioning.
- Please make sure to use this stopper in using 4-Wheel with Soundproofing.

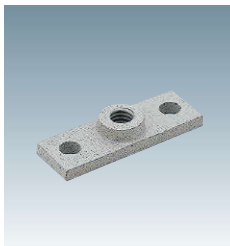
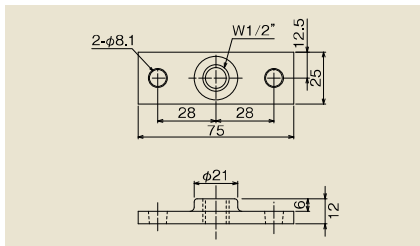


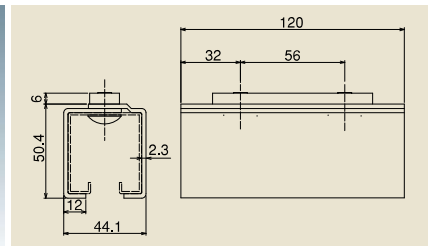
Plate
#2 PL



- Parts for connecting the bolt of 2 or 4-Wheel with the steel door.



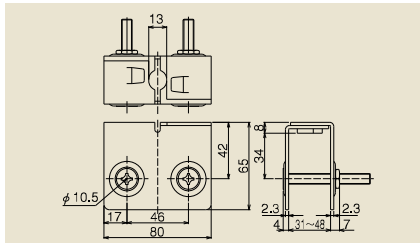
Rail Holder
#2 RH



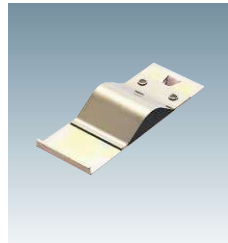
- Connection parts of rails between brackets.
- Short length rails can be connected in advance and installed as long length Rail.
- Unapplicable for Curb Rail and Ceiling Bracket.
- Assembly bolt: M8 x 12 Truss Screw.



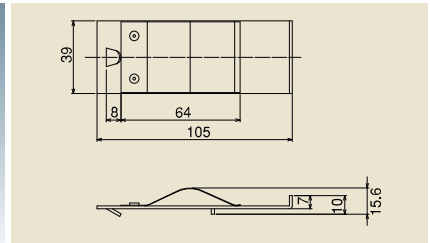
Apron
#2 AP



- With M8 x 65 Countersunk Bolt & Nut.
- Parts for connecting the bolt of 2 or 4-Wheel to wooden door.



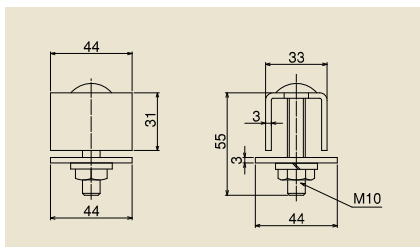
Joint Clamp
#2 RJ



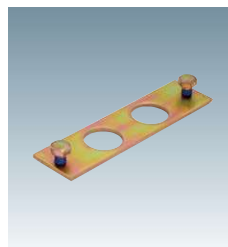
- Parts for preventing the gap of Hanger rail to use the hole of Rail edge and bracket.
- Unavailable for Curb Rail and Ceiling Bracket.



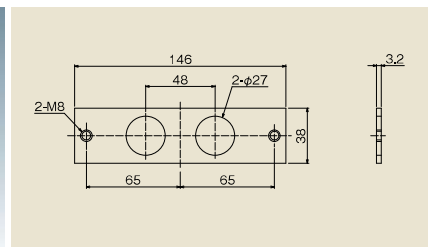
Stopper
#3 CS



- Common parts with #3
- In case the large impact force is expected, please use the bottom stopper with this stopper together and hit the door on the vertical frame.
- ※Unapplicable for use with Side Cover.



Rail Connection Plate
#2 RP

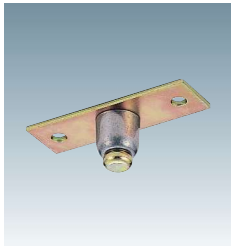


- 2 pcs of M8 bolt
- Prevent for backlash of rails and can connect the rails without welding.
- Applicable for Curb Rail, Wall and Ceiling Brackets.

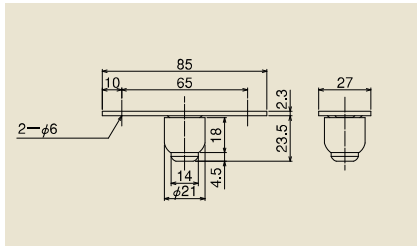
Steel Sliding Door Hanger No.2 (#2)

40kg by 2-wheel / 70kg by 4-wheel

#2



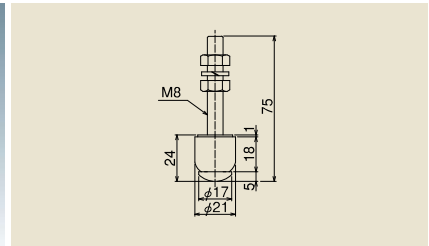
Guide Roller
#3 GRO



- Common parts with #3
- In case the strength is required, please use #3GRP12



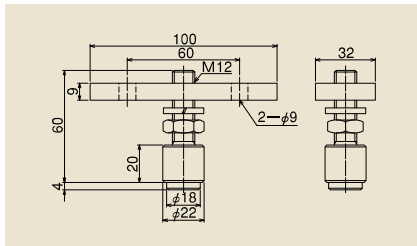
Bolt Type Guide Roller
#3 GRB



- Common parts with #3
- In case the strength is required, please use the #3GRB12



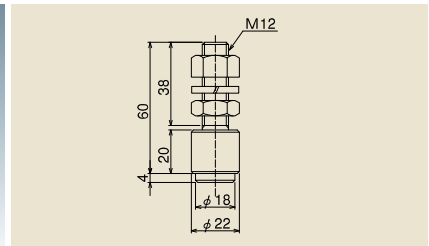
Plate Type Guide Roller
#3 GRP12



- Common parts with #3
- Roller is Polyacetal (Black Color)
- Reinforced Type of #3GRO
- Please use in the place where the strength is required.



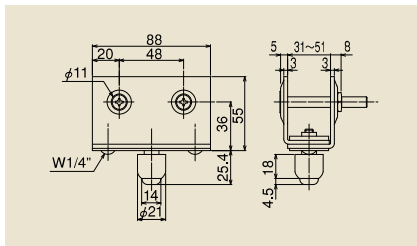
M12 Bolt Type Guide Roller
#3 GRB12



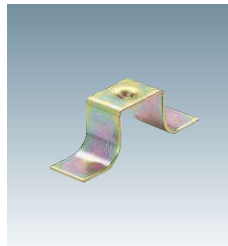
- Common parts with #3
- Roller is Polyacetal (Black Color)
- Reinforced Type of #3GRB
- Please use the Guide Roller in the place where the strength is required.



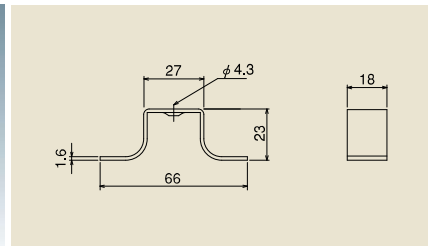
Guide Roller with Frame
#3 GRAP



- Common parts with #3
- With M8 x 65 countersunk bolt and Special nut.



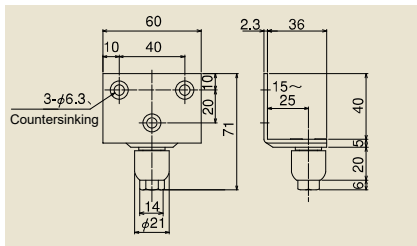
Guide Rail Anchor
#3 GRA



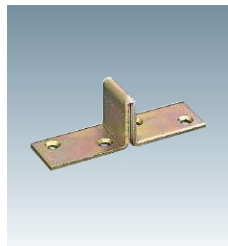
- Common parts with #3
- Please use this parts as Anchor for Guide Rail.



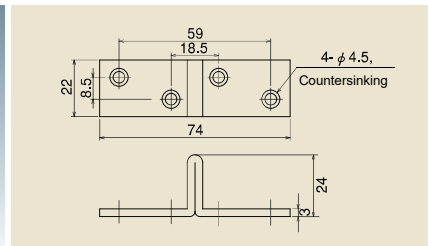
Retrofit Guide Roller
#3 GRL



- Common parts with #3
- Applicable door thickness: 30~50mm
- With 3 pcs of Nominal dia: 5 x 25 countersunk tapping screw



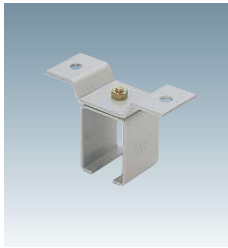
Bottom Stopper
#3 GRS



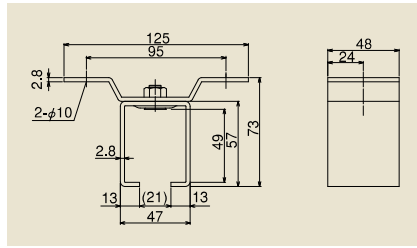
- Common parts with #3
- Mount the stopper in the internal grooved on the Guide Rail so that it works as the stopper for Guide Roller and it's used for door positioning.
- In case of the large impact force is expected, please use the stopper or stopper with rubber together and hit the door on the vertical frame.

Steel Sliding Door Hanger No.2 (#2)

Standard Mounting Pitch of Bracket is 400~500mm



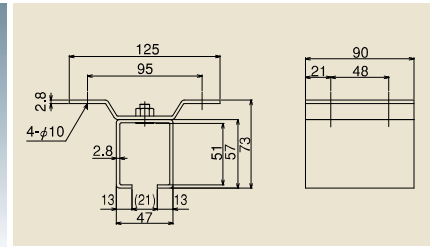
Ceiling Bracket
(Single Track)
#2 OB



- Assembly bolt of box and Wing are all W5/16" countersunk bolt.
- Recommended mounting Screw: M8



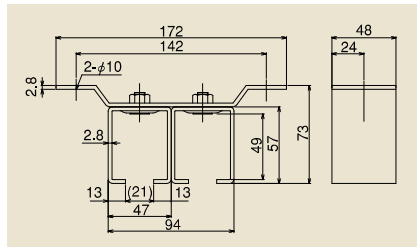
Rail Joint Bracket for
Ceiling
(Single Track)
#2 OBT



- Assembly bolt of box and Wing are all W5/16" countersunk bolt.
- Recommended mounting Screw: M8



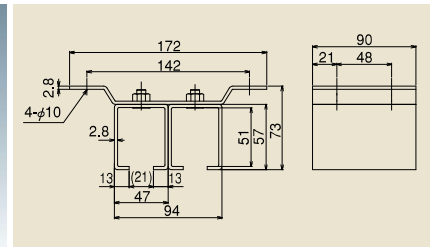
Ceiling Bracket
(Double Track)
#2 OB2



- Assembly bolt of box and Wing are all W5/16" countersunk bolt.
- Recommended mounting Screw: M8



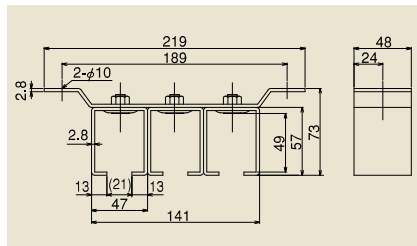
Joint Bracket for Ceiling
(Double Track)
#2 OBT2



- Assembly bolt of box and Wing are all W5/16" Flat head bolt.
- Recommended mounting Screw: M8



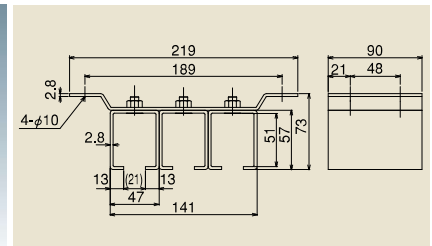
Ceiling Bracket
(Triple Track)
#2 OB3



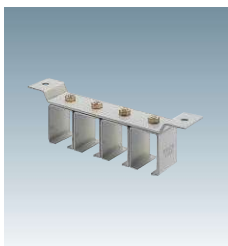
- Assembly bolt of box and Wing are all W5/16" countersunk bolt.
- Recommended mounting Screw: M8



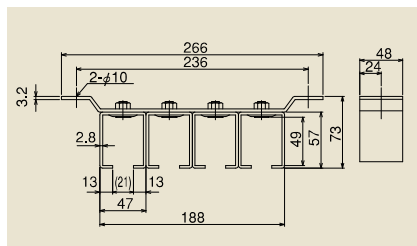
Joint Bracket for Ceiling
(Triple Track)
#2 OBT3



- Assembly bolt of box and Wing are all W5/16" countersunk bolt.
- Recommended mounting Screw: M8



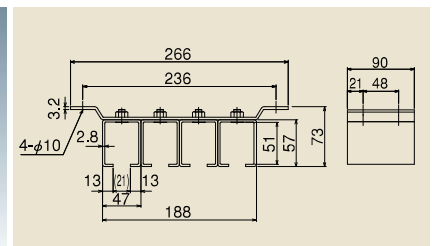
Ceiling Bracket
(Four Track)
#2 OB4



- Assembly bolt of box and Wing are all W5/16" Flat head bolt.
- Recommended mounting Screw: M8



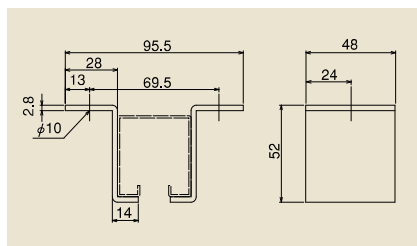
Joint Bracket for Ceiling
(Four Track)
#2 OBT4



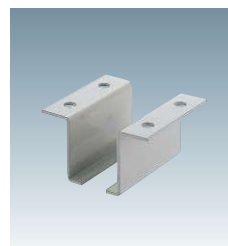
- Assembly bolt of box and Wing are all W5/16" countersunk bolt.
- Recommended mounting Screw: M8



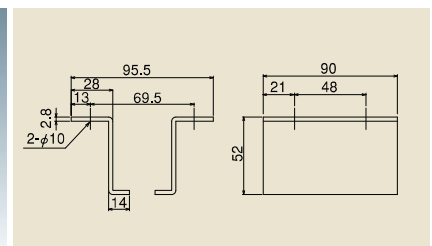
L Type Ceiling Bracket
#2 OBL



- Used for preventing the gap between Rail and Ceiling Bracket.
- Recommended mounting Screw: M8



L Type Joint Bracket
for Ceiling
#2 OBLT

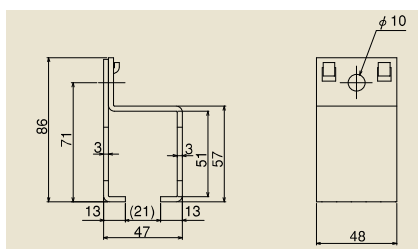


- Used for preventing the gap between Rail and Ceiling Bracket.
- Recommended mounting Screw: M8

Steel Sliding Door Hanger No.2 (#2)

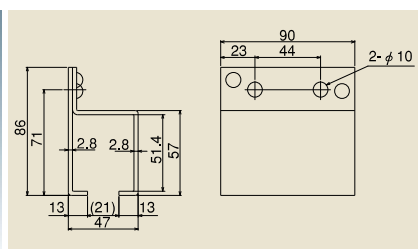
40kg by 2-Wheel / 70kg by 4-Wheel

Standard Mounting Pitch of Bracket is 400~500mm



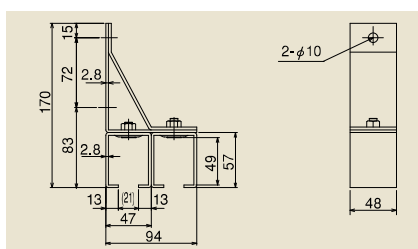
Wall Bracket
(Single Track)
#2 SB

•Recommended mounting Screw: M8



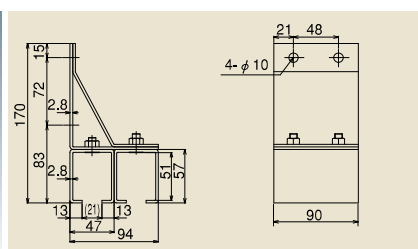
Rail Joint Bracket for Wall
(Single Track)
#2 SBT

•Recommended mounting Screw: M8



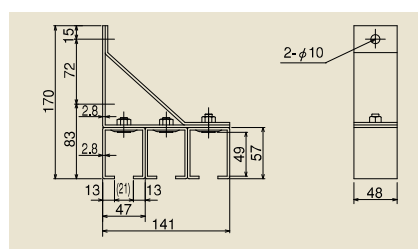
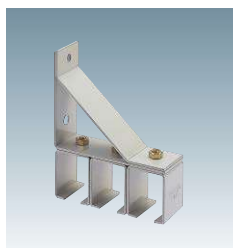
Wall Bracket
(Double Track)
#2 SB2

•Assembly bolt of box and Stay are all W5/16" countersunk bolt.
•Recommendable Screw: M8



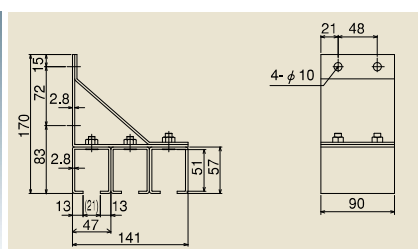
Rail Joint Bracket for Wall
(Double Track)
#2 OBT2

•Assembly bolt of box and Stay are all W5/16" countersunk bolt.
•Recommended mounting Screw: M8



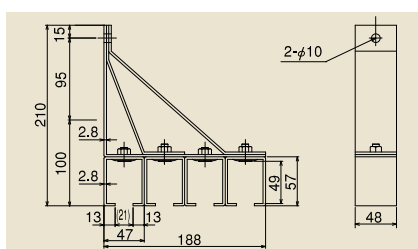
Wall Bracket
(Triple Track)
#2 SB3

•Assembly bolt of box and Stay are all W5/16" countersunk bolt.
•Recommended mounting Screw: M8



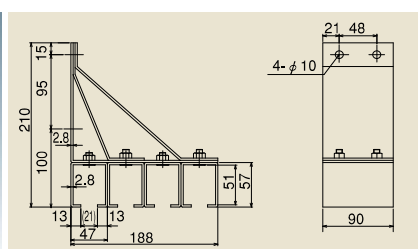
Rail Joint Bracket for Wall
(Triple Track)
#2 OBT3

•Assembly bolt of box and Stay are all W5/16" countersunk bolt.
•Recommended mounting Screw: M8



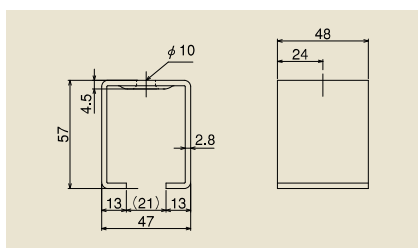
Wall Bracket
(Four Track)
#2 SB4

•Assembly bolt of box and Stay are all W5/16" countersunk bolt.
•Recommended mounting Screw: M8



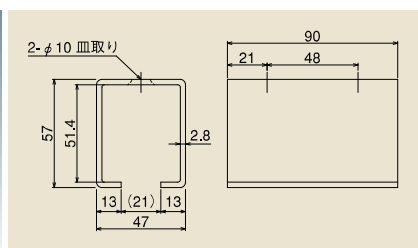
Rail Joint Bracket for Wall
(Four Track)
#2 SBT4

•Assembly bolt of box and Stay are all W5/16" countersunk bolt.
•Recommended mounting Screw: M8



Wall Bracket
#2 BOX

•Please use the W5/16" or M8 countersunk bolt for installation.



Rail Joint Bracket for Wall
#2 TBOX

•Please use the W5/16" or M8 countersunk bolt for installation.