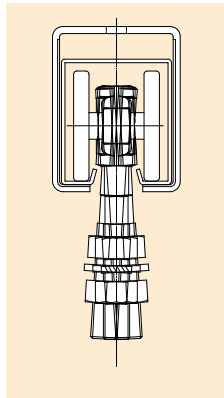


Sliding Door Hanger Newton40(N40)

●Load capacity 4000N(about 400KG) ●Made of Steel

Check the movie



Light and Silent sliding door hanger (*Hexavalent chromium free)

Our website: <https://www.daiken.ne.jp/eng/>

Loading capacity: 4000N(about 400kg) at two of 4-wheels per unit door.
2000N(about 200kg) at two of 2-wheels per unit door.
1000N(about 100kg) at one trolley 2-wheel.

- Medium weight model between #4 and #5 door hanger.
The name comes from international standard unit(SI)
- Hanger rail has high durability and light weight by high strength surface treated steel sheet.
- Wheel out side is made of resin. The hanger rail designed so that inside wall of wheel and rail edges do not touch. Therefore wheel running is smooth and quiet.
- As the hanging bolt is designated to be flexible and respond against any inclination of door or hanging tools, each wheels receives equal loading.
The wheel is available for R=600mm curved rail.
- Brackets are processed to avoid any scratch during installation job.
- 4 wheel and 2 wheel are provided to hang door and tools as well as semi-finished goods.
- Each parts has bar-code seal for simplifying the inventory control.

⚠ All of Hanger Rail, Rip Guide Rail and Bolt for hanging wheel is Millimeter size and not compatible with conventional steel door hanger parts.

■ Comparison date of Door weight 2940N(300kg)
(Our domestic research)

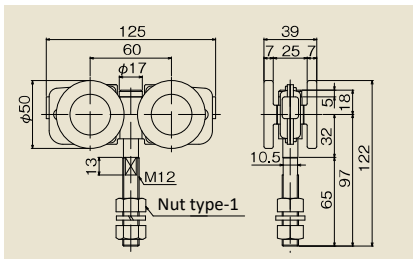
*Hanging at two of 4-wheels

Sliding door hanger	Opening power (N)	Running noise (dB)
	Initial value	Initial value
Newton40 (N40)	23.5N (2.4kgf)	56dB
No. 4(#4)	91.1N (9.3kgf)	68dB

N40 model



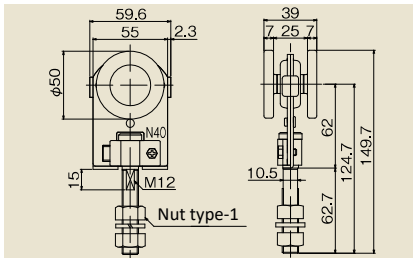
N40
4-wheel
N40-4WS



- Materials: SPHC (Trivalent Chromate), Resin, etc.
- Loading capacity up to 400kgs by 2pcs hanging per one door (approx. 4000N).
- Body shaft has bearing.
- Can also run on Curb Rail(R600).
- *Don't use to other models than N40 Hanger Rail (N40 Curb Rail).



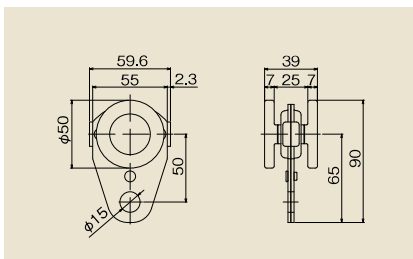
N40
2-wheel
N40-2WS2



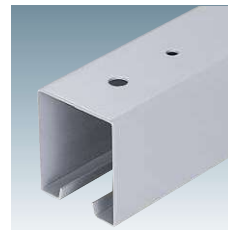
- Materials: SPHC(Trivalent Chromate), Resin, etc.
- Loading capacity up to 200kgs by 2pcs hanging per one door (approx. 2000N).
- Body shaft has bearing.
- Changeable hanging bolt
- Runnable on Curb Rail(R600).
- *Don't use to other models than N40 Hanger Rail(N20 Curb Rail).



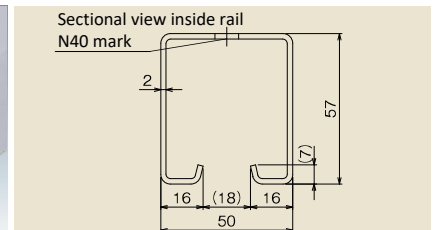
N40
Trolley 2 wheel
N40-2TR



- Materials: SPHC(Trivalent Chromate), Resin, etc.
- Less than 500N(approx. 50kg) per one.
- Suitable for hanging Air and Electronic tool.
- Bearing used in the Fuselage axis.
- Runnable on Curb Rail(R600).
- Not use other than N40 Hanger Rail (N40 Curb Rail).
- *Can't use for Rail direct mounting specification.



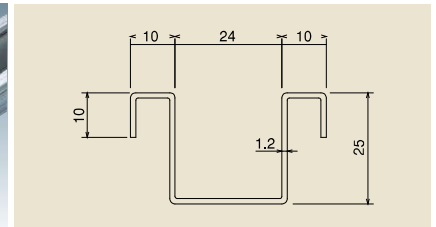
N40
Hanger Rail
N40-HR



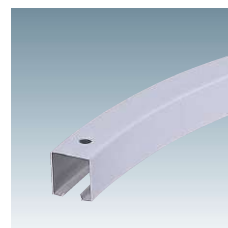
- Materials: SGH
(Powder coating finish Munsell N7)
- Standard length 2000, 3000mm
- *Can't be mounted directly



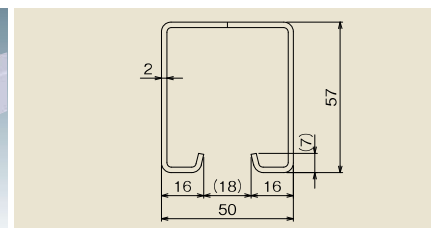
N40
Rip guide rail
N20-NGR



- Materials: SGCC
- Standard length 2000, 3000mm
- Both of bended edge works as Anchor.



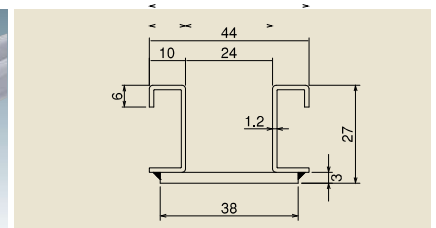
N40
Curb rail
N40-HR600R



- Materials: SGC
(Powder coating Munsell M7)
- Standard R: R600(1/4 circle)
- Cross-sectional shape is same with N40 standard hanger rail.
- Available more than R600



N40
Rip guide rail
N20-NGR600R



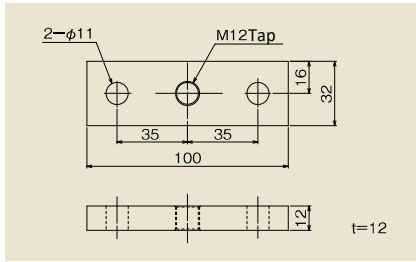
- Materials: SPHC
(lacquer-finished Munsell symbol N7)
- Standard R: R600
- Cross-sectional shape differ from N20 Rip Guide Rail.
- Available more than R600

Sliding Door Hanger Newton40(N40)

Products other than Wheel, Hanger Rail, Curb Rail, Plate, Guide Roller, Frame Guide Roller and stopper with holder are same with Newton 20(N20)



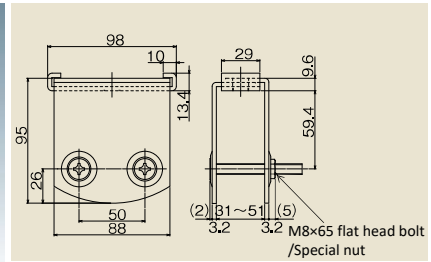
N40
Plate
N40-PL



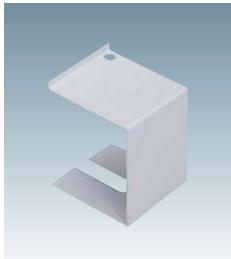
- Materials: SS400 (Trivalent Chromate)
- Parts to connect bolt of wheel and steel door.
- Recommendable screw: M10



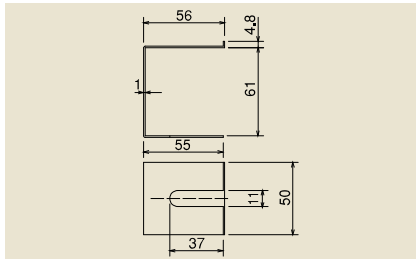
N40
Apron
N40-AP



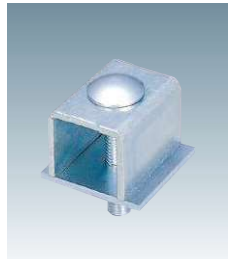
- Materials: SPHC (Powder coating Munsell N7), etc.
- Parts to connect bolt of wheel and wooden door.



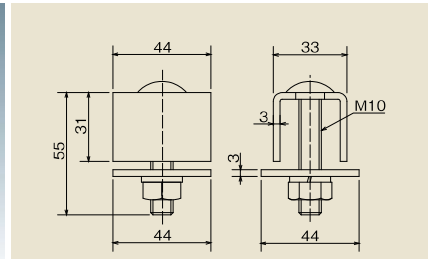
N20
Side Cover
N20-SK



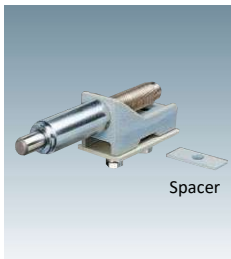
- Materials: SPCC (Powder coating Munsell N7)
- Use for covering edge of rail. Please use the stopper if stop the wheel.
- *Can't use for Joint bracket for ceiling.
- *Can't use for Curb rail



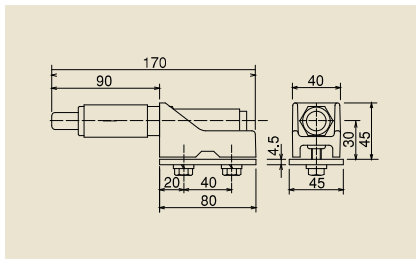
N20
Stopper
N20-CS



- Materials: SPHC(Trivalent Chromate), etc
- Fix rail and bracket(Ceiling, wall bracket) to prevent a rail misalignment.
- Use door stop if stop the wheel.



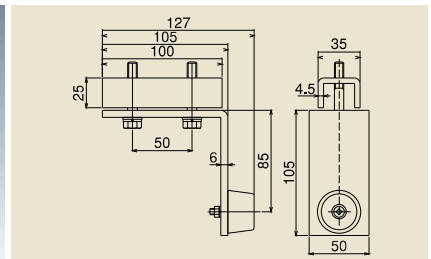
N20
Stopper with dumper
N20-DCS



- Materials: FCD(Trivalent Chromate), SPHC(Powder coating finish Munsell symbol N7), etc.
- Damper absorbs impact.
- *Push backed at 30mm caused by repulsive force.
- *Can't use for Curb rail.



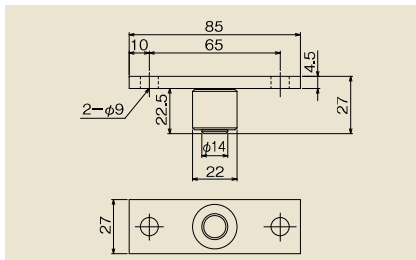
N20
Stopper for below rail
N20-RCS



- Materials: SPHC (Powder coating Munsell N7), Rubber (Black) etc.
- Install bottom stopper (option) together.
- *Unable to use with curb rail.



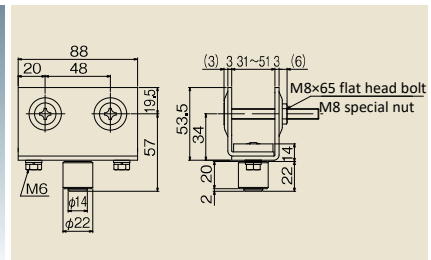
N40
Guide Roller
N40-GRO



- Materials: SPHC(Trivalent Chromate), Resin, etc.
- Recommended screw: M5



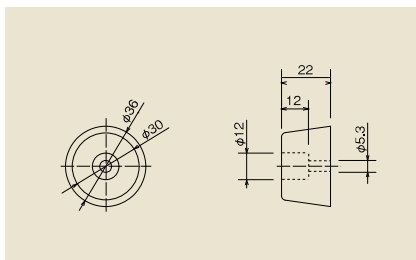
N40
Frame guide roller
N40-GRAP



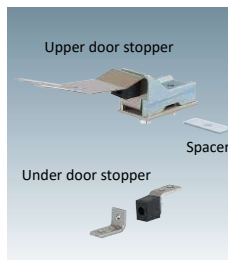
- Materials: SPHC (Powder coating finish Munsell symbol 5Y7/1), Resin, etc..



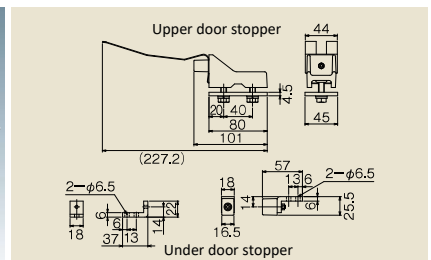
N20
Rubber Stopper
N20-CSG



- Materials: Rubber(Black)
- Install on door frame.
- Recommended mounting screw: M5

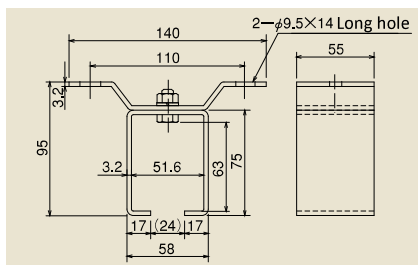


N40
Stopper with holder
N40-KCS



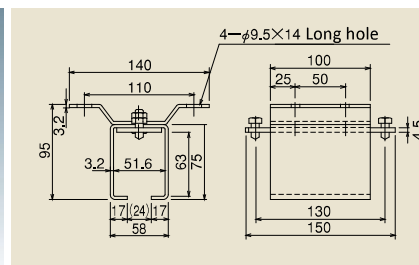
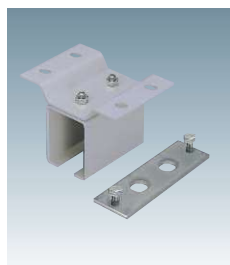
- Materials: FCD450(Trivalent Chromate), SUS304, Rubber(Black), etc.
- 1set of Upper door stopper and Under door stopper
- Use in bi-parting fitting.
- Recommended mounting screw: M6
- *Can't be used for curb rail.

Sliding Door Hanger Newton40(N40)



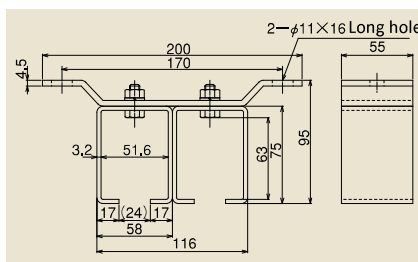
N20
Ceiling bracket
(Single channel)
N20-OB

- Material: SS400 (Powder coating Munsell N7), etc.
- Bolt of box and wing: M8
- Recommendable screw: M8



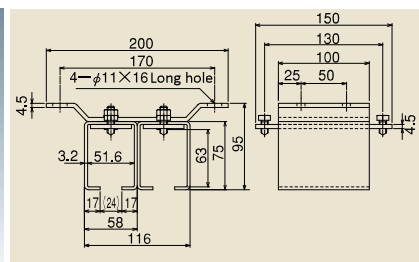
N20
Joint bracket for ceiling
(Single channel)
N20-OBT

- Material: SPHC (Powder coating Munsell N7), etc.
- Joint parts for rail
- With joint plate
- Bolt of box and wing: M8
- Recommendable screw: M8



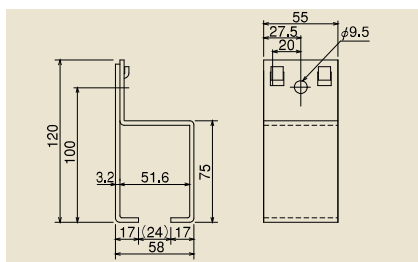
N20
Wall bracket
(Double channel)
N20-OB2

- Material: SPCC Powder coating Munsell N7), etc.
- Bolt of box and wing: M8
- Recommendable screw: M8



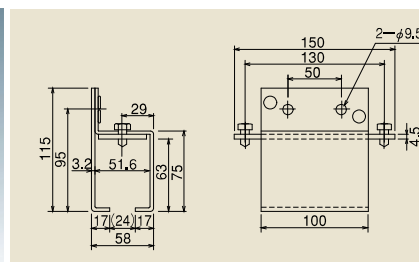
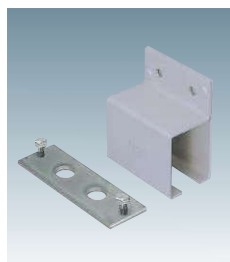
N20
Joint bracket for ceiling
(Double channel)
N20-OBT2

- Material: SS400 (Powder coating Munsell N7), etc.
- Joint parts for rail
- With joint plate
- Bolt of box and wing: M8
- Recommendable screw: M10



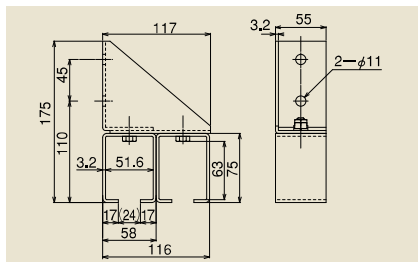
N20
Wall bracket
(Single channel)
N20-SB

- Material: SS400 (Powder coating Munsell N7), etc.
- Differ mounting hole position from Joint bracket.
- Recommendable screw: M8



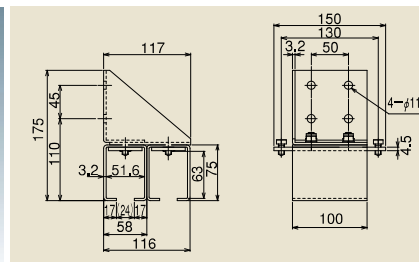
N20
Joint bracket for wall
(Single channel)
N20-SBT

- Material: SS400 (Powder coating Munsell N7), etc.
- Joint parts for rail
- With joint plate
- Differ mounting hole position from Joint bracket.
- Recommendable screw: M8



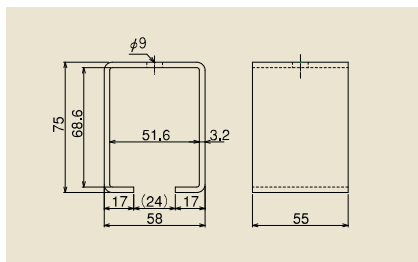
N20
Wall bracket
(Dual channel)
N20-SB2

- Material: SS400 (Powder coating Munsell N7), etc.
- Bolt of box and bracket: M8
- Recommendable screw: M10



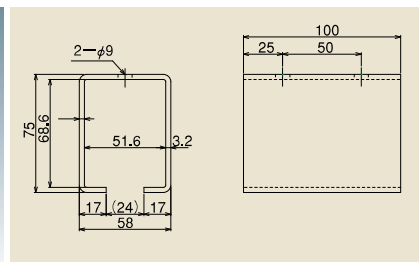
N20
Joint bracket for wall
(Dual channel)
N20-SBT2

- Material: SPHC (Powder coating Munsell N7), etc.
- Joint parts for rail
- With joint type
- Bolt of box and wing: M8
- Recommendable screw: M8



N20
Box bracket
N20-BOX

- Material: SS400 (Powder coating Munsell N7)
- Recommendable screw: M8



N20
Joint bracket for box
N20-TBOX

- Material: SS400 (Powder coating Munsell N7)
- Joint parts for rail
- Recommendable screw: M8