

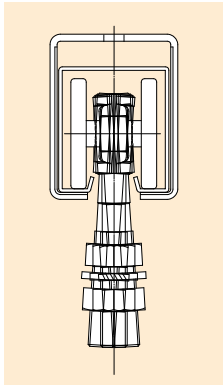
Steel Door Hanger Newton20(N20)

Load capacity 2000N(about 200KG)

Check the movie



Our website: <https://www.daiken.ne.jp/eng/>



Light and Silent sliding door hanger (*Hexavalent chromium free)

Loading capacity: 2000N(about 200kg) at two of 4-wheels per unit door.
1000N(about 100kg) at two of 2-wheels per unit door.
500N(about 50kg) at one trolley 2-wheel.

- Medium weight model between #3 and #4 door hanger.
The name comes from international standard unit(SI)
- Hanger rail has high durability and light weight by high strength surface treated steel sheet.
- Wheel out side is made of resin. The hanger rail designed so that inside wall of wheel and rail edges do not touch. Therefore wheel running is smooth and quiet.
- As the hanging bolt is designated to be flexible and respond against any inclination of door or hanging tools, each wheels receives equal loading.
The wheel is available for R=600mm curved rail.
- Brackets are processed to avoid any scratch during installation job.
- 4 wheel and 2 wheel are provided to hang door and tools as well as semi-finished goods.
- Each parts has bar-code seal for simplifying the inventory control.

⚠ All of Hanger Rail, Rip Guide Rail and Bolt for hanging wheel is Millimeter size and not compatible with conventional steel door hanger parts.

■ Comparison date of Door weight 1470N(150kg) (Our domestic research)

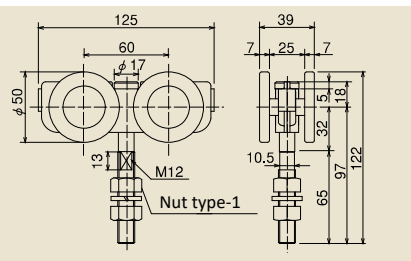
*Hanging at two of 4-wheels

Steel door hanger	Opening power (N)	Running noise (dB)
	Initial value	Initial value
Newton (N20)	7.84N (0.8kgf)	50dB
No. 4(#4)	68.6N (7.0kgf)	68dB

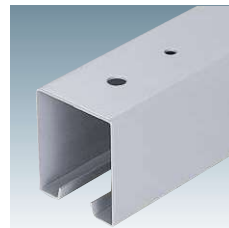
N20 model



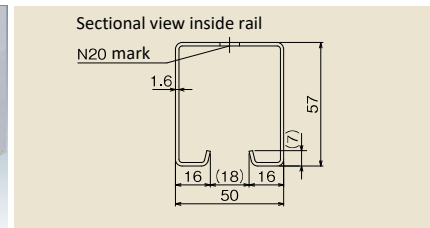
N20
4-wheel
N20-4WS



- Materials: SPHC (Trivalent Chromate), Resin, etc.
 - Loading capacity up to 200kgs by 2pcs hanging per one door (approx. 2000N).
 - Body shaft has bearing.
 - Can also run on Curb Rail(R600).
- *Don't use to other models than N20 Hanger Rail(N20 Curb Rail).



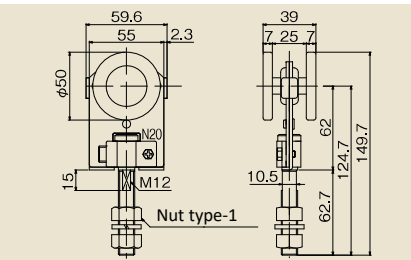
N20
Hanger rail
N20-HR



- Materials: SGH (Power coating finish Munsell N7)
- Standard length 2000, 3000mm



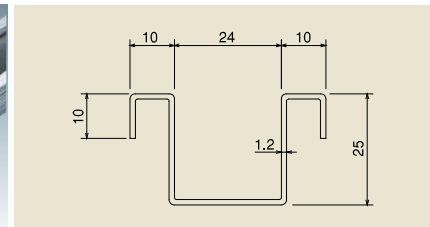
N20
2-wheel
N20-2WS2



- Materials: SPHC(Trivalent Chromate), Resin, etc.
 - Loading capacity up to 100kgs by 2pcs hanging per one door (approx. 1000N).
 - Body shaft has bearing.
 - Changeable hanging bolt
 - Runnable on Curb Rail(R600).
- *Don't use to other models than N20 Hanger Rail(N20 Curb Rail).



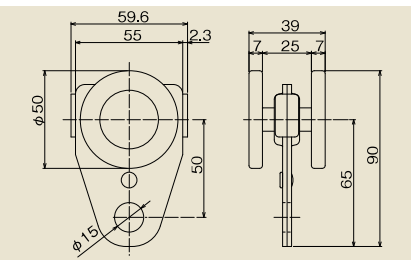
N20
Lip guider rail
N20-NGR



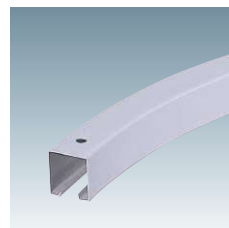
- Materials: SGCC
- Standard length 2000, 3000mm
- Both of bended edge works as Anchor.



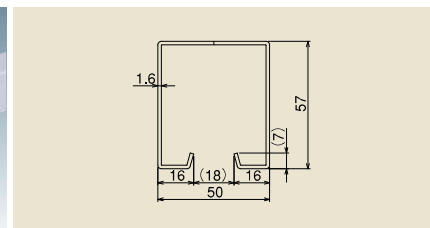
N20
Trolley 2 wheel
N20-2TR



- Materials: SPHC(Trivalent Chromate), Resin, etc.
 - Less than 500N(approx. 50kg) per one.
 - Suitable for hanging Air and Electronic tool.
 - Bearing used in the Fuselage axis.
 - Runnable on Curb Rail(R600).
 - Not use other than N20 Hanger Rail (N20 Curb Rail).
- *Can't use for Rail direct mounting specification.



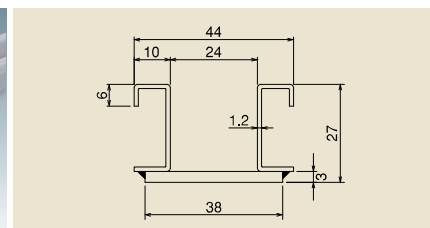
N20
Curb rail
N20-HR600R



- Materials: SGC (Powder coating Munsell M7)
- Standard R: R600(1/4 circle)
- Cross-sectional shape is same with N20 standard hanger rail.
- Available more than R600



N20
Lip curb guide rail
N20-NGR600R

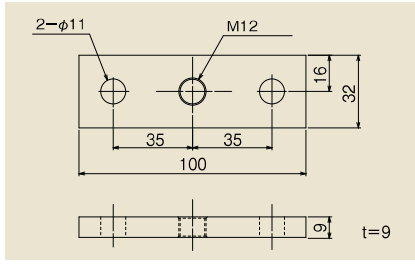


- Materials: SGC (lacquer-finished Munsell symbol N7)
- Standard R: R600
- Cross-sectional shape differ from N20 Rip Guide Rail.

Steel Door Hanger Newton20(N20)



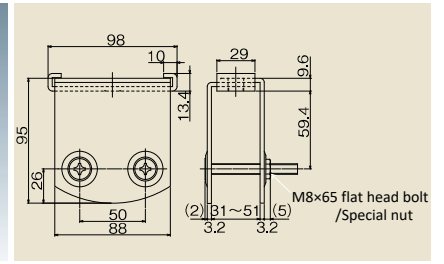
N20
Plate
N20-PL



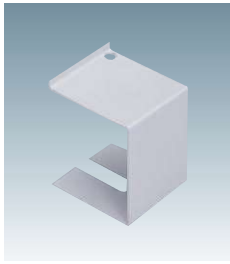
- Materials: SS400 (Trivalent Chromate)
- Parts to connect bolt of wheel and steel door.
- Recommendable screw: M10



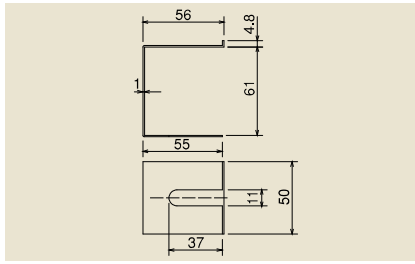
N20
Apron
N20-AP



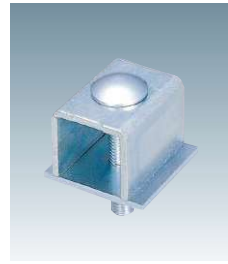
- Materials: SPHC (Power coating Munsell N7), etc.
- Parts to connect bolt of wheel and steel door.



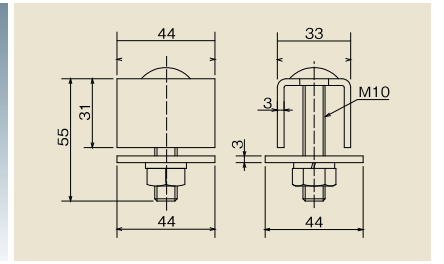
N20
Side cover
N20-SK



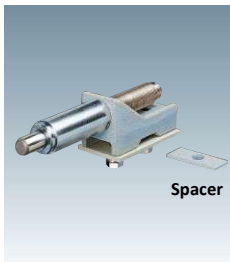
- Materials: SPCC (Powder coating Munsell N7)
- Use for covering edge of rail. Please use the stopper if stop the wheel.
- *Can't use for Joint bracket for ceiling.
- *Can't use for Curb rail



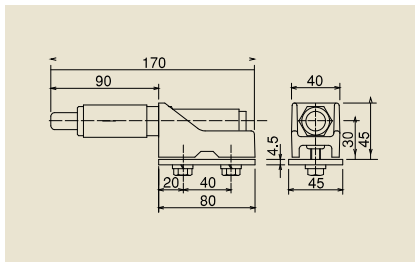
N20
Stopper
N20-CS



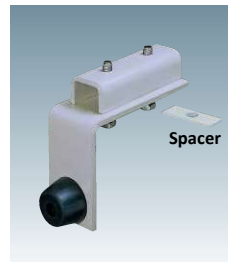
- Materials: SPHC(Trivalent Chromate), etc
- Fix rail and bracket(Ceiling , wall bracket) to prevent a rail misalignment.
- Use door stop if stop the wheel.



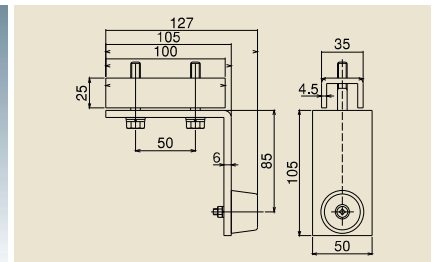
N20
Stopper with dumper
N20-DCS



- Materials: FCD(Trivalent Chromate), SPHC(Power coating finish Munsell symbol N7), etc
- Damper absorbs impact.
- *Push backed at 30mm caused by repulsive force.
- *Can't use for Curb rail.



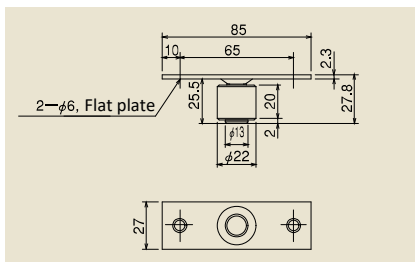
N20
Stopper
for below rail
N20-RCS



- Materials: SPHC (Power coating Munsell N7), Rubber (Black) etc.
- Install bottom stopper (option) together.
- Unable to use with curb rail.



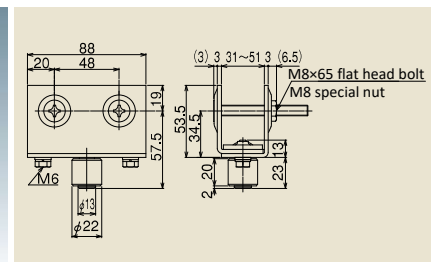
N20
Guide roller
N20-GRO



- Materials: SPHC(Trivalent Chromate), Resin, etc.
- Recommended screw: M5



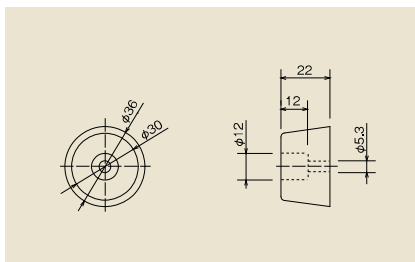
N20
Frame guide roller
N20-GRAP



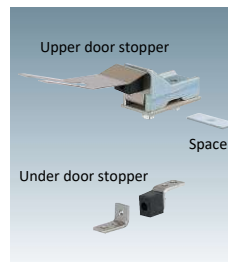
- Materials: SPHC (Power coating finish Munsell symbol N7), Resin, etc.
- Recommendable screw: M5



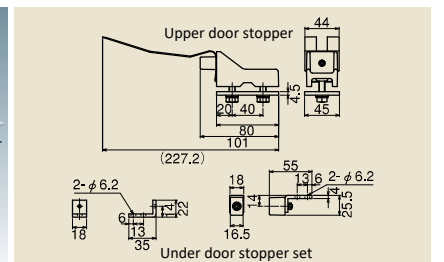
N20
Rubber stopper
N20-CSG



- Materials: Rubber(Black)
- Install on door frame.
- Recommended mounting screw: M5

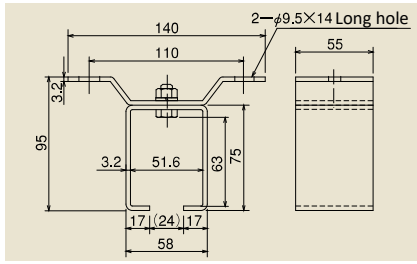
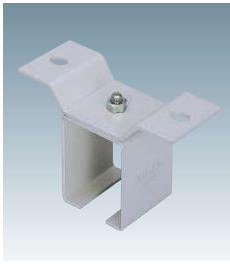


N20
Stopper with holder
N20-KCS



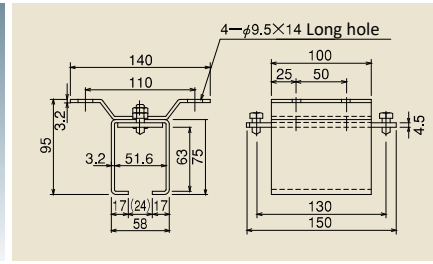
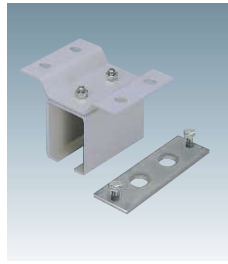
- Materials: FCD450(Trivalent Chromate), SUS304, Rubber(Black), etc.
- 1set of Upper door stopper and Under door stopper
- Use in bi-parting fitting.
- Recommended mounting screw: M6
- *Can't be used for curb rail.

Steel Door Hagner NEWTON20(N20)



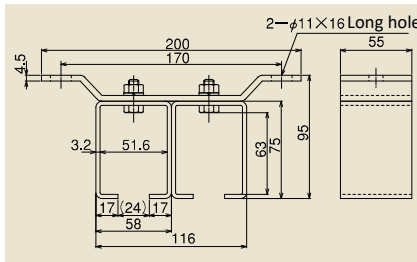
N20
Ceiling bracket
(Single channel)
N20-OB

- Material: SS400 (Power coating Munsell N7), etc.
- Bolt of box and wing: M8
- Recommendable screw: M8



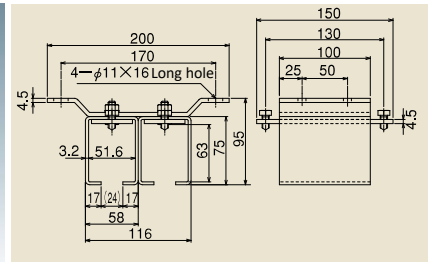
N20
Joint bracket for ceiling
(Single channel)
N20-OBT

- Material: SPHC (Power coating Munsell N7), etc.
- Joint parts for rail
- With joint plate
- Bolt of box and wing: M8
- Recommendable screw: M8



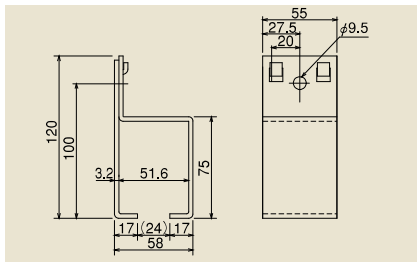
N20
Wall bracket
(Double channel)
N20-OB2

- Material: SPCC (Power coating Munsell N7), etc.
- Bolt of box and wing: M8
- Recommendable screw: M8



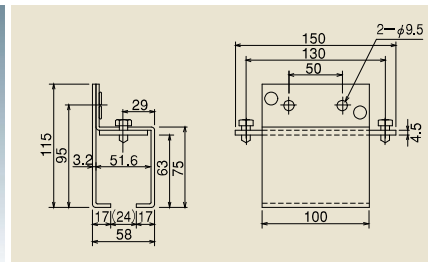
N20
Joint bracket for ceiling
(Double channel)
N20-OBT2

- Material: SS400 (Powder coating Munsell N7), etc.
- Joint parts for rail.
- With joint plate
- Bolt of box and wing: M8
- Recommendable screw: M10



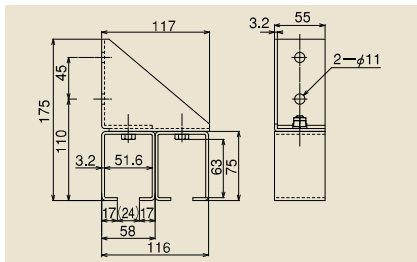
N20
Wall bracket
(Single channel)
N20-SB

- Material: SS400 (Powder coating Munsell N7), etc.
- Differ mounting hole position from Joint bracket.
- Recommendable screw: M8



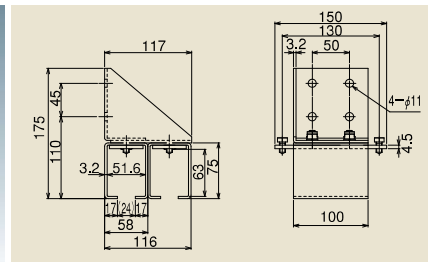
N20
Joint bracket for wall
(Single channel)
N20-SBT

- Material: SS400 (Powder coating Munsell N7), etc.
- Joint parts for rail.
- With joint plate
- Differ mounting hole position from Joint bracket.
- Recommendable screw: M8



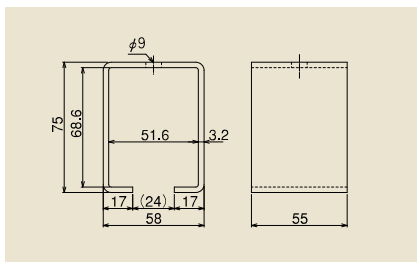
N20
Wall bracket
(Dual channel)
N20-SB2

- Material: SS400 (Powder coating Munsell N7), etc.
- Bolt of box and bracket: M8
- Recommendable screw: M10



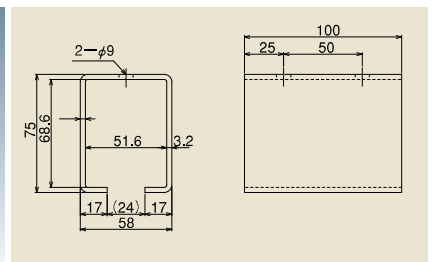
N20
Joint bracket for wall
(Dual channel)
N20-SBT2

- Material: SPHC (Powder coating Munsell N7), etc.
- Joint parts for rail
- With joint type
- Bolt of box and wing: M8
- Recommendable screw: M8



N20
Box bracket
N20-BOX

- Material: SS400 (Powder coating Munsell N7)
- Recommendable screw: M8



N20
Joint bracket for box
N20-TBOX

- Material: SS400 (Powder coating Munsell N7)
- Joint parts for rail.
- Recommendable screw: M8