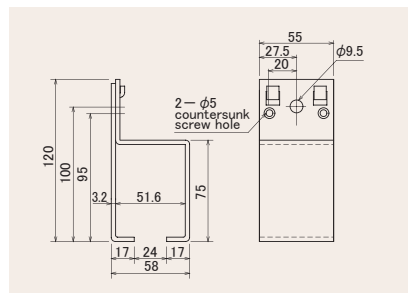
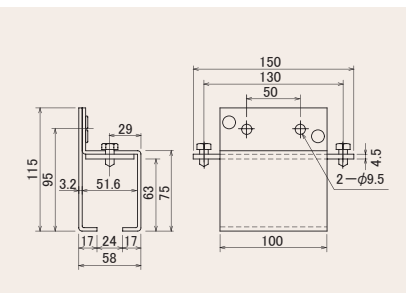
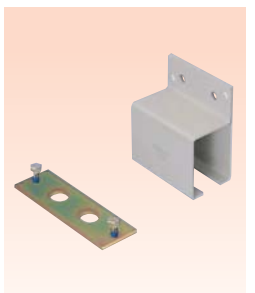


Standard distance of bracket to bracket to be 450~500mm.



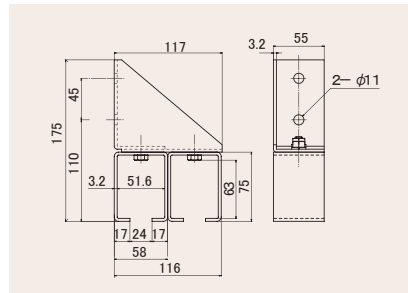
**N20 Side bracket for single channel**  
N20-SB

•Materials: SPHC(electrodeposition coating mangel 5Y7/1) resin, etc.



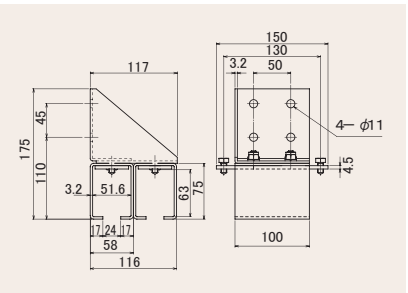
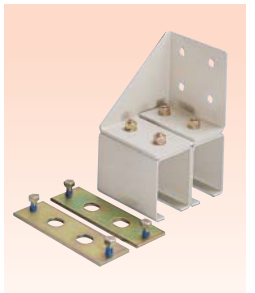
**N20 Side bracket for rail to other rail connection**  
N20-SBT

•Materials: SPHC(electrodeposition coating mangel 5Y7/1) resin, etc.  
•Used for connecting the rail to other rail.  
•Connecting plate is supplied.



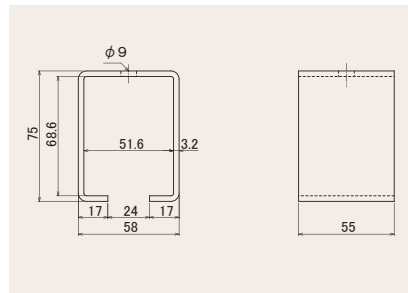
**N20 Side bracket for double channels**  
N20-SB2

•Materials: SPHC(electrodeposition coating mangel 5Y7/1) resin, etc.  
•M8 bolt for fixing.



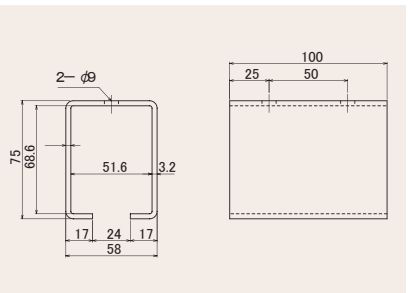
**N20 Side bracket for connecting the rail to other rail (for double-channels)**  
N20-SBT2

•Materials: SPHC(electrodeposition coating mangel 5Y7/1) resin, etc.  
•M8 bolt for fixing.  
•Used for connecting the rail to other rail.  
•Connecting plate is supplied.



**N20 Ceiling Bracket**  
N20-BOX

•Materials: SPHC(electrodeposition coating mangel 5Y7/1) resin, etc.  
•M8 bolt with hexagonal head to be used for installation.



**N20 Ceiling Bracket for Connecting rail to other rail**  
N20-TBOX

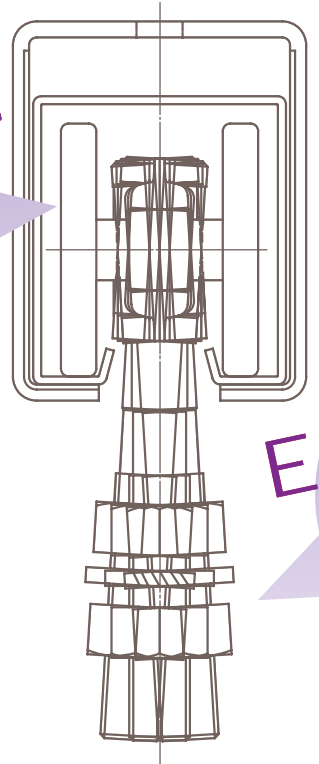
•Materials: SPHC(electrodeposition coating mangel 5Y7/1) resin, etc.  
•Used for connecting rail to other rail.  
•M8 bolt with hexagonal head to be used for installation.

# NEWTON 20 SERIES

(Durable upto 200kg approx.)

**Smooth & Quiet!**

- Resin treatment is made on the outer-ring of wheel.
- The hanger rail has unique design



**Equal loading!**

- The hanging-bolt is designed to be flexible and each wheel receives equal loading.

## Smooth operation with silence

Available for door weight upto 200kg. with 2 pcs. of double-wheel for hanging 1 piece door.  
Available for door weight upto 50kg. With 1 piece of Trolley.

- We commercialized medium weight model (available for door weight upto 200 kg.) between class #3 and #4 which are most prevailing in the market. For naming, we adopted international standard unit (SI).
- Hanger Rail is made of high strength steel having special process of treatment on the surface and realized strength and pursued for lightweight class.
- Resin treatment is made on the outer-ring of wheel. The hanger rail has unique design so that inside-wall of wheel and rail edges do not touch. Therefore, smooth and quiet operation is secured during wheel runs.
- As the hanging-bolt is designed to be flexible and respond nicely against any inclination of door or hanging tools, each wheel receives equal loading. (PAT). The wheel is available for running on curved rail with 600mm radius.
- Brackets are treated to avoid any scratch during installation job.
- Double wheel and single wheel are provided to hang door and tools as well as semi-finished goods.
- Each parts has barcode seal for simplifying the inventory control.

**CAUTION**  
The millimeter measurement is adopted to Hanger Rail, Lip Guide Rail and Bolt for double-wheel. Therefore, they are not compatible with other parts of steel door hanger.

Measured value for door weight 150 kg. (our internal experimental data) used 2 pcs of double-wheel.

	(N)opening power		(dB)decibel while running	
	initial value	Value after 70,000 meters test-run	initial value	Value after 70,000 meters test-run
N20 steel hanger	7.84N (0.8kgf)	24.5N (2.5kgf)	50dB	64dB
#4 steel door hanger	68.60N (7.0kgf)	72.5N (7.4kgf)	68dB	75dB



Slidex

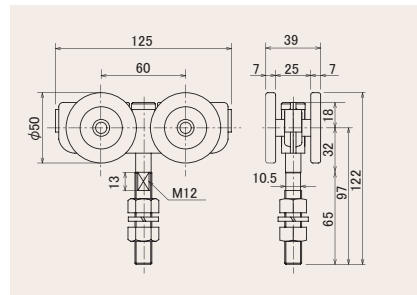


House Closer



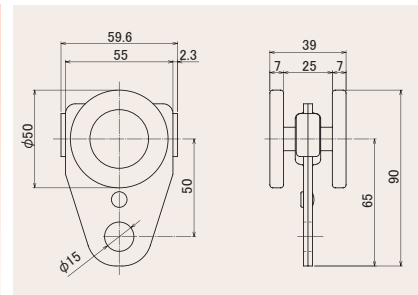
**DAIKEN CO., LTD.**  
2-7-13 Niitaka, Yodogawa-ku, Osaka, Japan (Postal Code: 532-0033)  
Tel : 81-6-6150-4776, Fax : 81-6-6150-4777  
URL : <http://www.daiken.ne.jp>





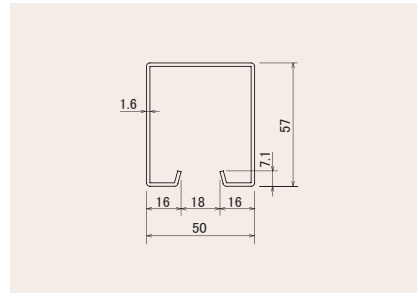
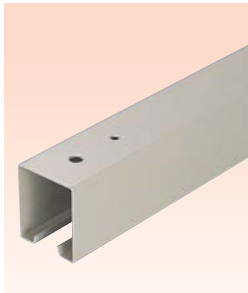
**N20 double wheel**  
N20-4WS

•Materials: SPHC (chromate), resin, etc.  
•To be less than 204kg for a door by 2 pcs. Hanging.  
•Bearing is used for body shaft.  
•Not recommendable to use for other models except N20 hanger rail. (N20 curved rail).



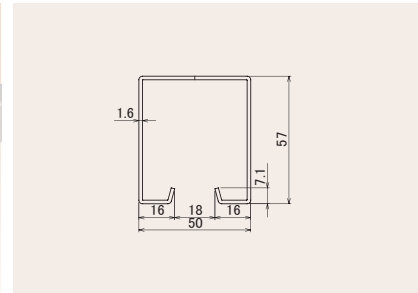
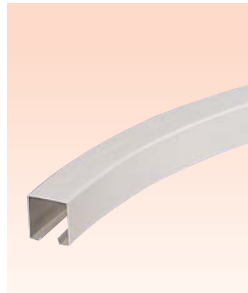
**N20 trolley single wheel**  
N20-2TR

•Materials: SPHC(chromate), resin, etc.  
•To be less than 51kg. For a door by 1 piece hanging.  
•Arranged for balancer, such pneumatic tools and electric tools can be used.  
•Bearing is used for body-shaft.  
•Not recommendable to use other models except N20 hanger rail (N20 curved rail).



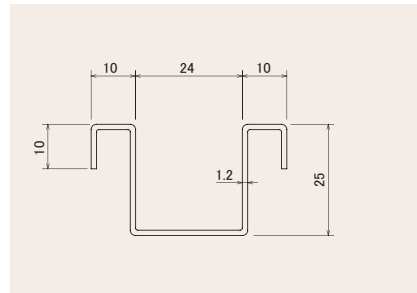
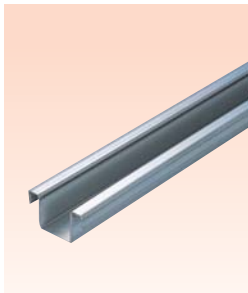
**N20 hanger rail**  
N20-HR

•Materials: SGH(electrodeposition coating) mansel 5Y7/1  
•standard length: 2,000mm 3,000mm.



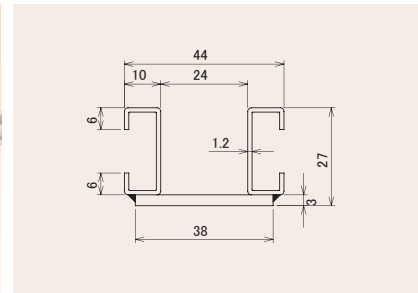
**N20 curved rail**  
N20-HR600R

•Materials: SGH(electrodeposition coating) mansel 5Y7/1  
•STANDARD R: R600mm(1/4 circle)  
•shape of cross section is same as N20 hanger rail.



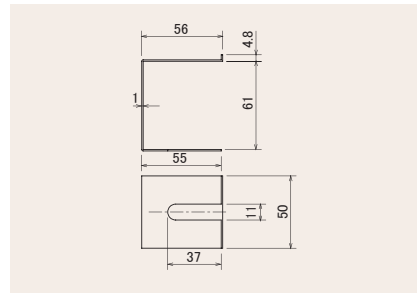
**N20 lip guide rail**  
N20-NGR

•Materials: SGCC  
•Standard length: 2,000mm 3,000mm  
•Both sides of lip have edges downward.  
•Therefore, it gives a role of anchor.  
•shape of cross section is different from N20 lip curve rail.



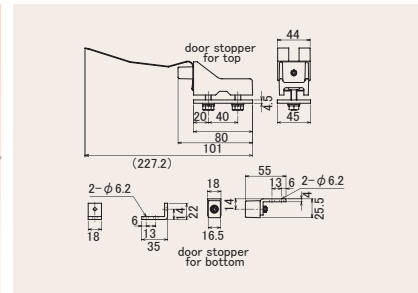
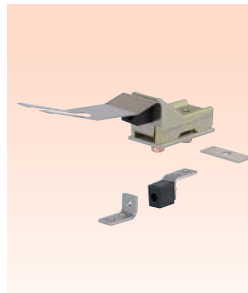
**N20 lip curved guide rail**  
N20-NGR600R

•Materials: SPHC(clear laquered coating) mansel 5Y7/1  
•standard R: R600 (1/4 : R600(1/4 circle)  
•shape of cross section is different from lip guide rail.



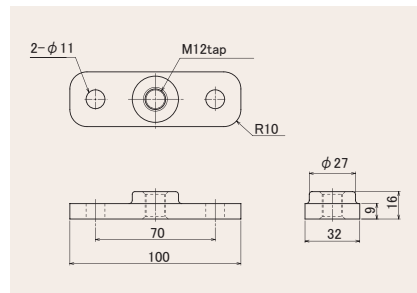
**N20 side cover**  
N20-SK

•Materials: SPCC(electrodeposition coating) mansel 5Y7/1.  
•It covers the end of hanger rail. In case you need to stop wheel, please use door stopper.



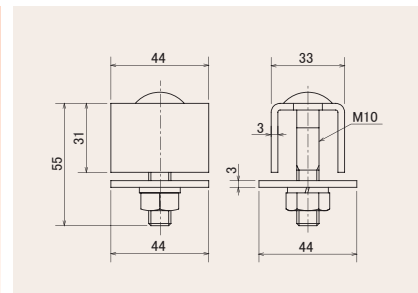
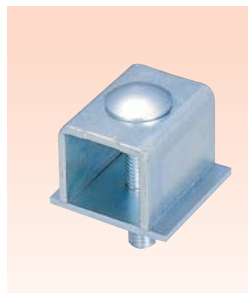
**N20 door stopper with holder**  
N20-KCS

•Materials: FCD450, SUS304, etc.  
•One set consists of upper and bottom portion.  
•Please use this door stopper for bi-parting system.



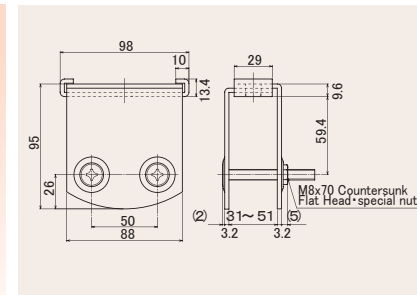
**N20 plate**  
N20-PL

•Materials: FCD40 (chromate)  
•This is the parts which connects the bolt of double-wheel and steel door mainly.



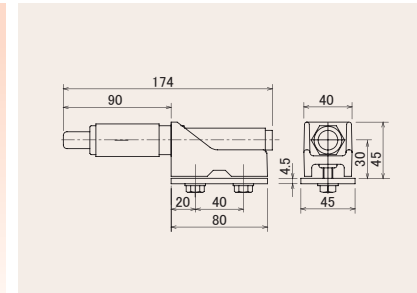
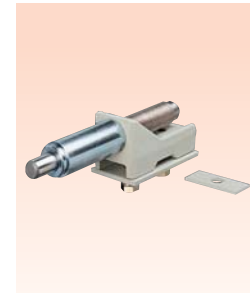
**N20 Fixing metal for rail & bracket**  
N20-CS

•Materials: SPHC (Unichromed), etc.  
•Fixes rail with bracket (ceiling bracket and side bracket) and protects the rail should not be out of place.  
•In case you need to stop wheel, please use door stopper.



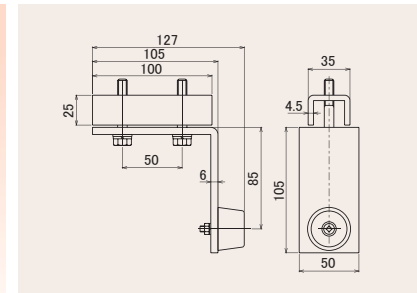
**N20 Apron**  
N20-AP

•Materials: SPHC(electrodeposition coating) mansel 5Y7/1.  
•This is the parts which connects the bolt of double-wheel and wooden door.  
•Be careful when double Hanger Rails are installed because each bolt head hits each other.



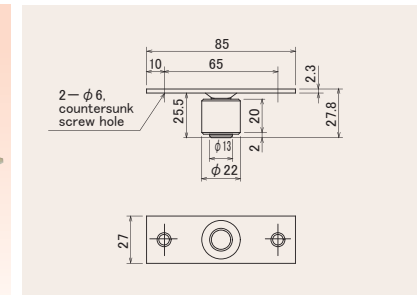
**N20 stopper with shock absorber**  
N20-DCS

•Materials: FCD450, SPHC(electrodeposition coating) mansel 5Y7/1, etc.  
•Especially used for the condition of no vertical frame is available for mounting door stop.  
•Absorbs a shock.  
\* Rebounds about 30mm after it functioned.



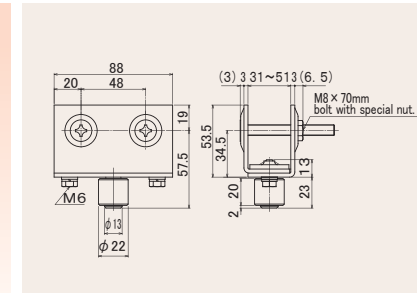
**N20 Stopper mounted on hanger rail**  
N20-RCS

•Materials: SPHC (electrodeposition coating) mansel 5Y7/1, rubber (black), etc.



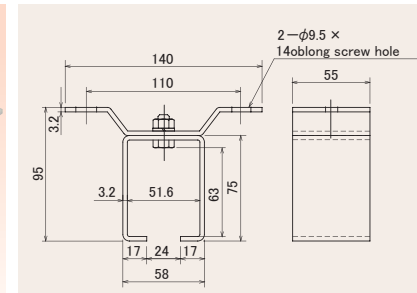
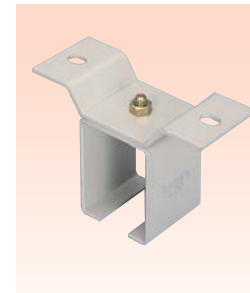
**N20 guide roller**  
N20-GRO

•Materials: SPHC(Chromate), resin, etc.



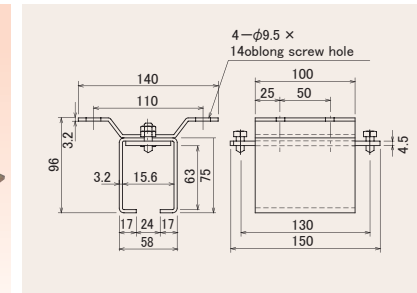
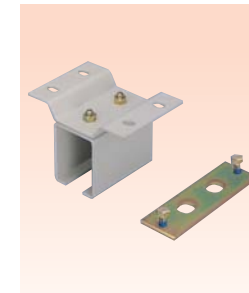
**N20 guide roller with frame**  
N20-GRAP

•Materials: SPHC(electrodeposition coating) mansel 5Y7/1 resin, etc.  
•Be careful when double Hanger Rails are installed because each bolt hits each other.



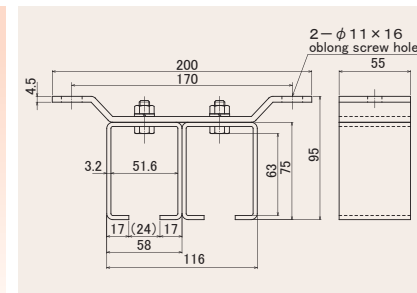
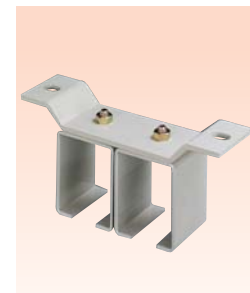
**N20 Ceiling Bracket for Single channel**  
N20-OB

•Materials: SPHC(electrodeposition coating) mansel 5Y7/1 resin, etc.  
•M8 bolt for fixing.



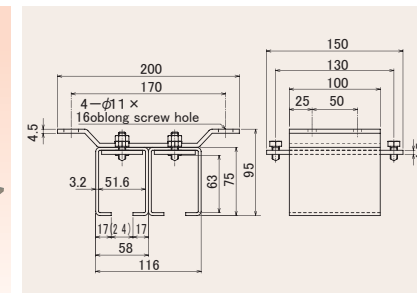
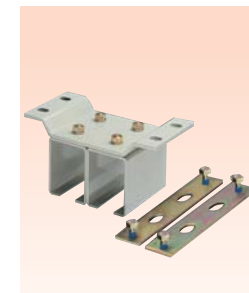
**N20 Ceiling Bracket for Rail to other rail connection for single channel**  
N20-OBT

•Materials: SPHC(electrodeposition coating) mansel 5Y7/1 resin, etc.  
•M8 bolt for fixing.  
•Used for connecting the rail to other rail.  
•Connecting plate is supplied.



**N20 Ceiling Bracket for Rails(for double-channels)**  
N20-OB2

•Materials: SPHC(electrodeposition coating) mansel 5Y7/1 resin, etc.  
•M8 bolt for fixing.



**N20 Ceiling Bracket for Rail to other rail connection (for double-channels)**  
N20-OBT2

•Materials: SPHC(electrodeposition coating) mansel 5Y7/1 resin, etc.  
•M8 bolt for fixing.  
•Used for connecting the rail to other rail.  
•Connecting plate is supplied.